

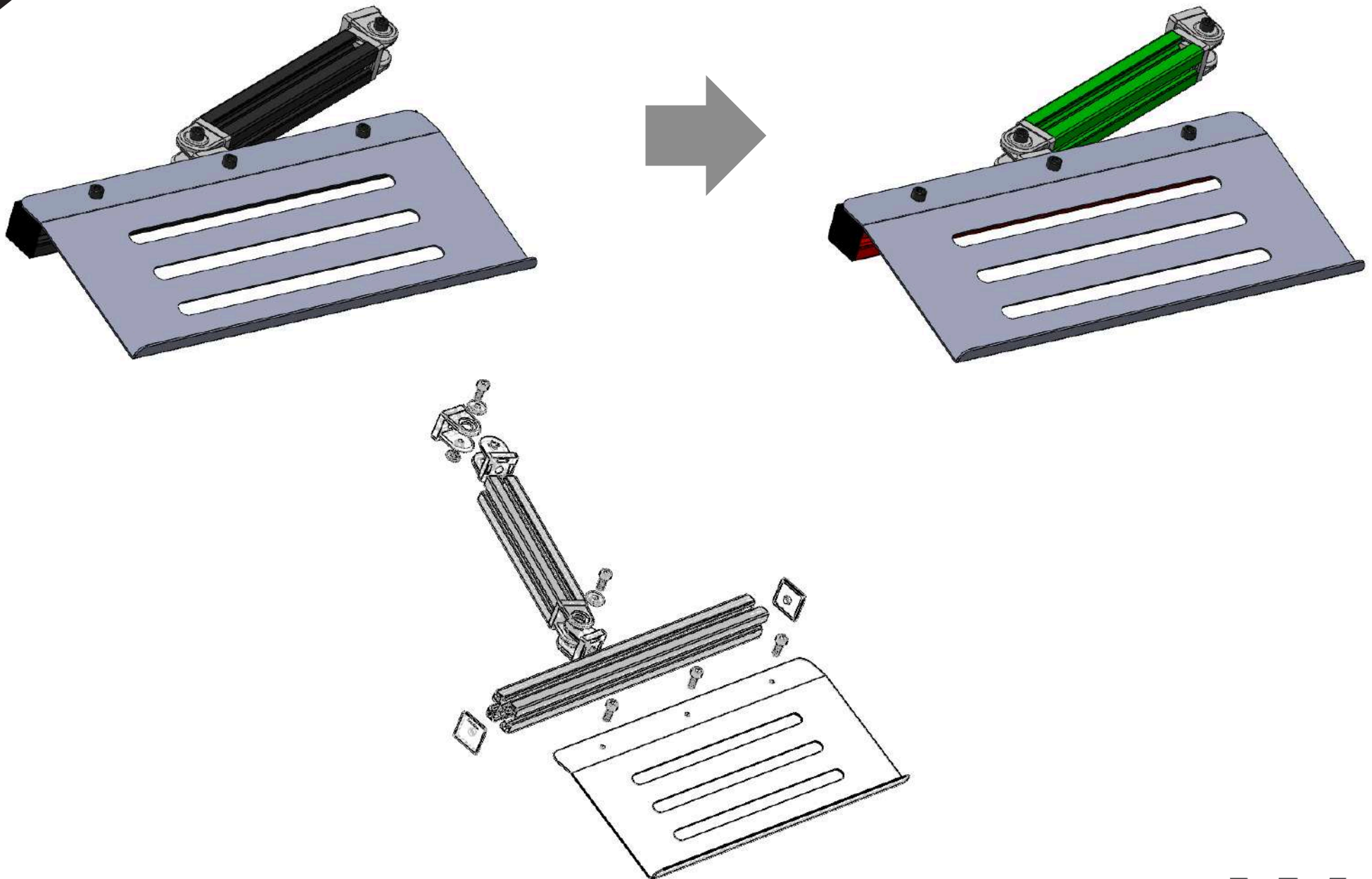


## **ADJUSTABLE KEYBOARD KIT**



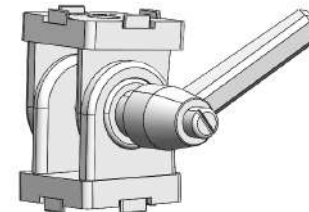
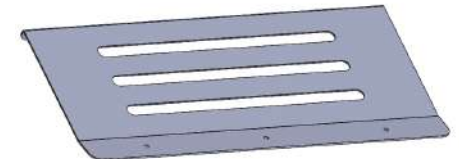
**Visit our website for more information**  
**[www.wolfracing.eu](http://www.wolfracing.eu)**

1

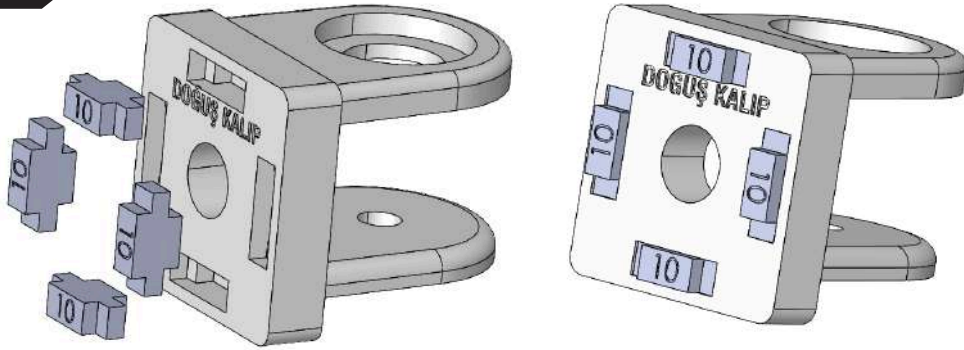


Kit components are shown in different colors for assembly.

## --- KIT COMPONENTS ---

**40-40-475****40-40-240 (Optional)****M10x30 Button flange head  
(x 1/2)****M8x16 Countersunk Screw  
(x 1/2)****M8x20 Socket Head Cap  
(x 6/4)****M8 T-Slot Nut  
(x1 Optional)****M8 Hammerhead Nut  
(x3)****40x40 END CAP  
(x 1/2)****40x40 Moving Joint  
(x 1/2)****Keyboard plate  
(x1)**

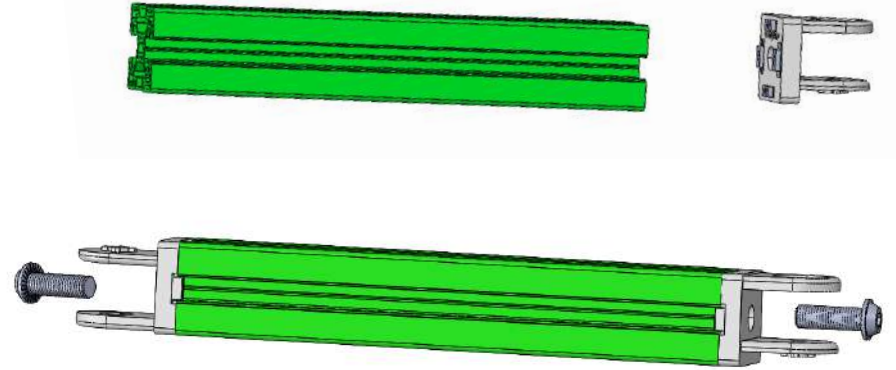
# 3



## 1

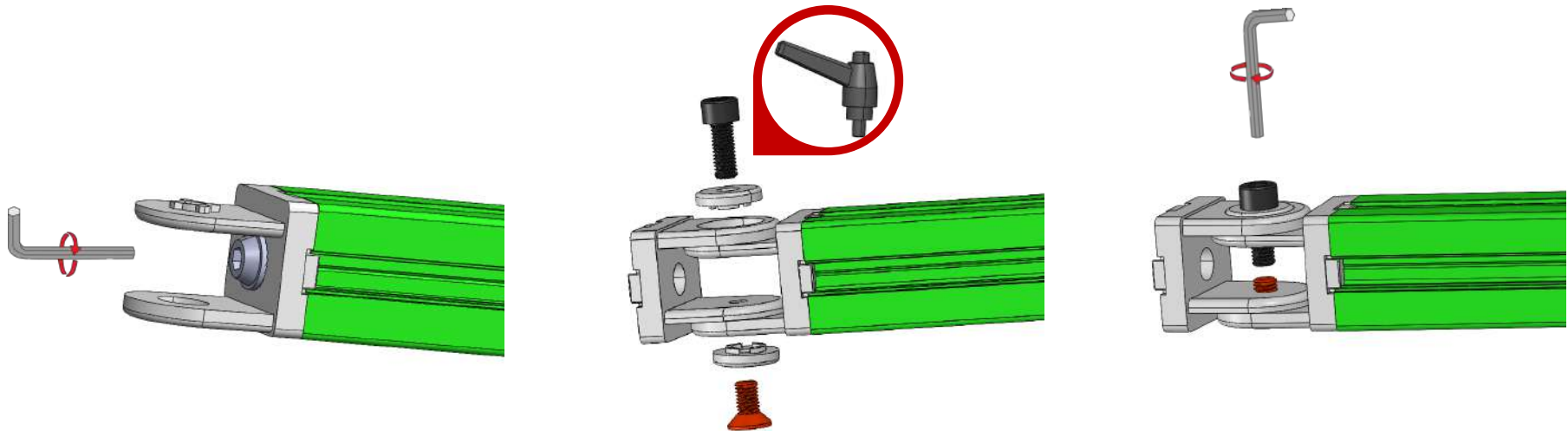
Place the slot converters as shown at illustration.

## 2



Mount the joint parts to 40-40-240 profile with button flange head screws as shown.

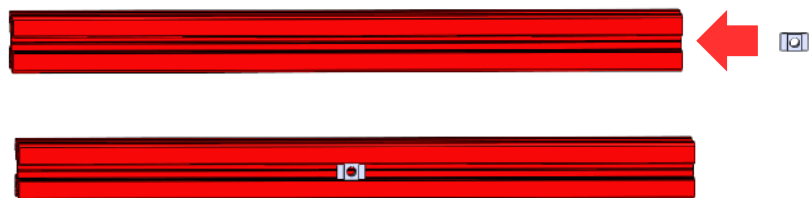
## 3



Tighten the screws with using hex key, then mount the other parts of the joint as shown. You can use clamp layer instead of socket head cap screw.



# 4

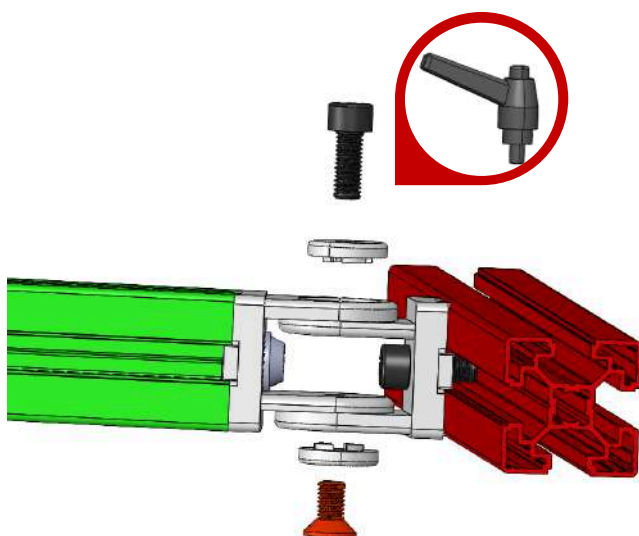
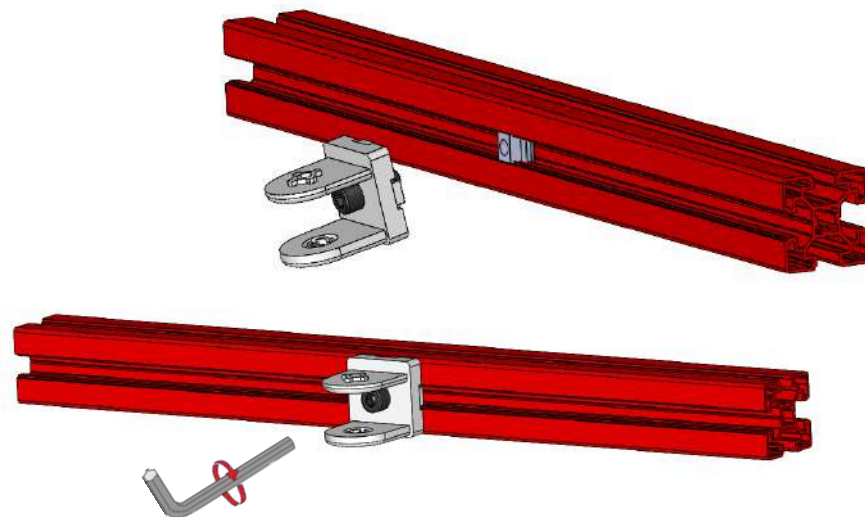


**1**

Place the T-slot nut in to the canal of 40-40-475 profile as shown.

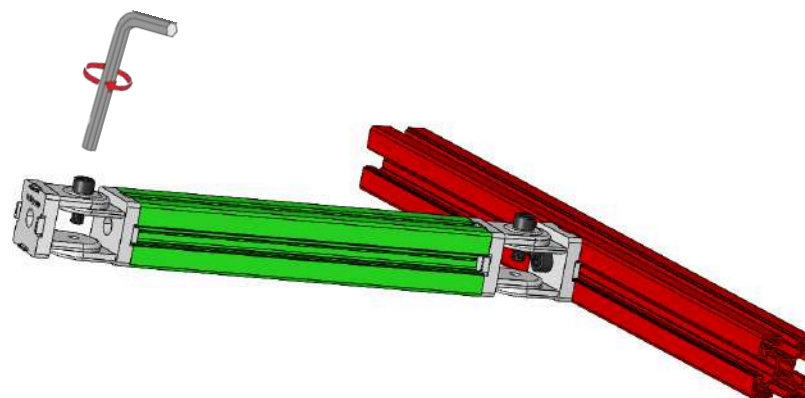
**2**

Mount the joint part with socket head cap screws, center and tighten the nut as shown.



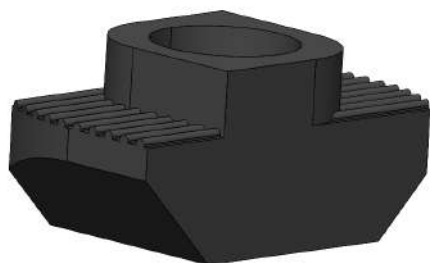
**3**

Tighten the screws with using hex key, then mount the other parts of the joint as shown. You can use clamp laver instead of socket head cap screw.





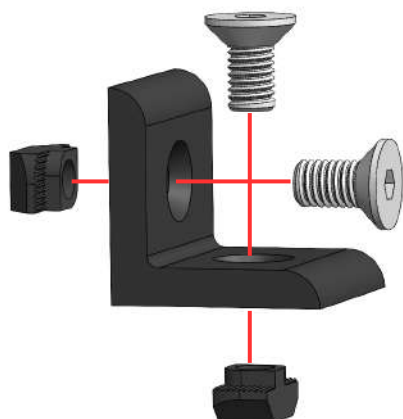
## --- Use Of Hammerhead Nut ---



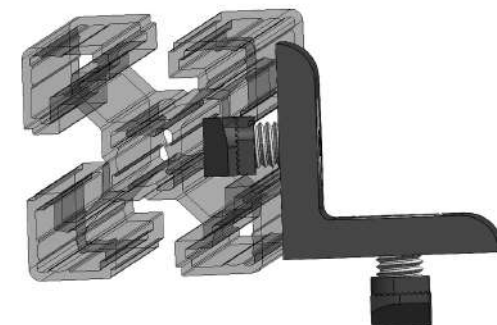
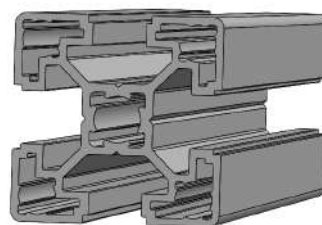
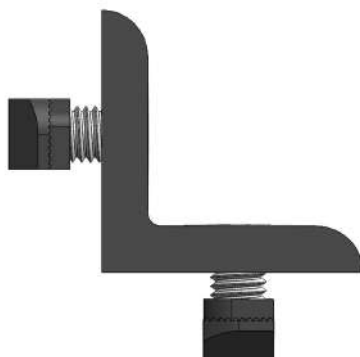
Hammerhead Nut helps to connect 2 different profile to each other. Unlike the T-slot nut, the hammerhead nut does not have to be installed from the side of profile, it can be inserted directly into the canal.

The hammerhead nut is initially tightened just enough to hold the screw, not completely; Otherwise, the requirement space for connecting will be eliminated. **(Illustration 1)**. The hammerhead nut, which is properly attached to the screw, is inserted into the canal. **(Illustration 2)** and tighten clockwise with the help of an hex key. **(Illustration 3)**. The hammerhead nut moves to the position shown in **(Illustration 4)** and engages with the profile.

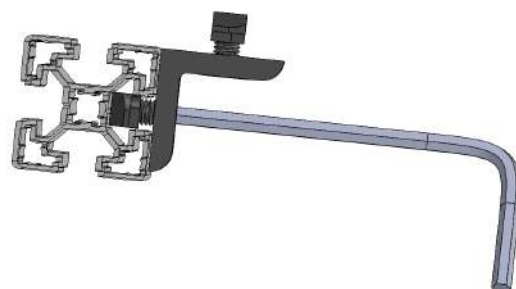
If hammerhead nut would not turn inside of the canal it would not connect with other profile



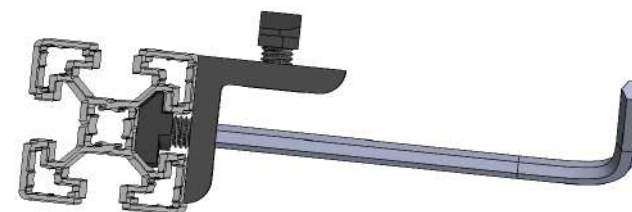
**Illustration 1**



**Illustration 2**

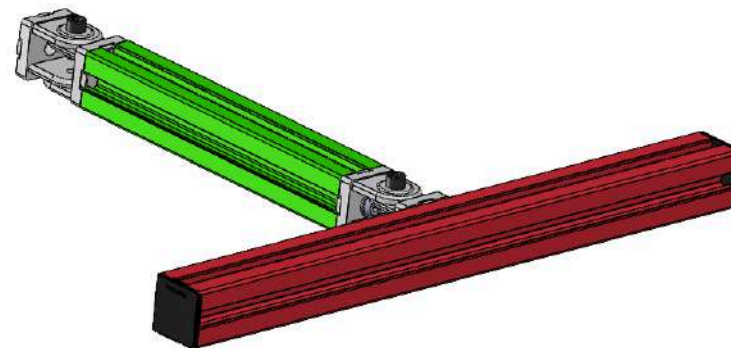
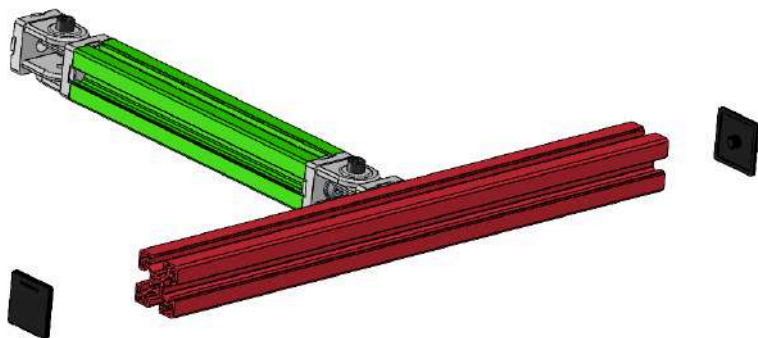


**Illustration 3**



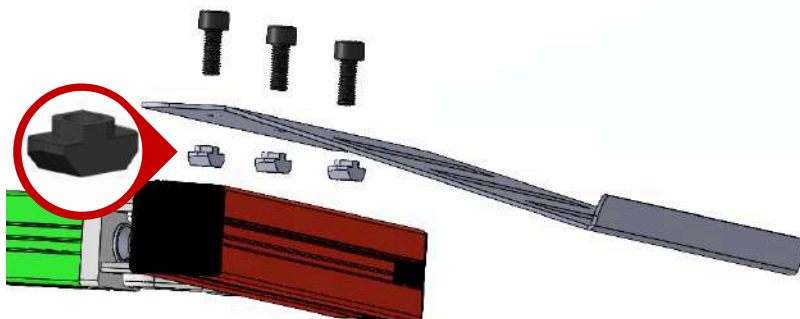
**Illustration 4**

5



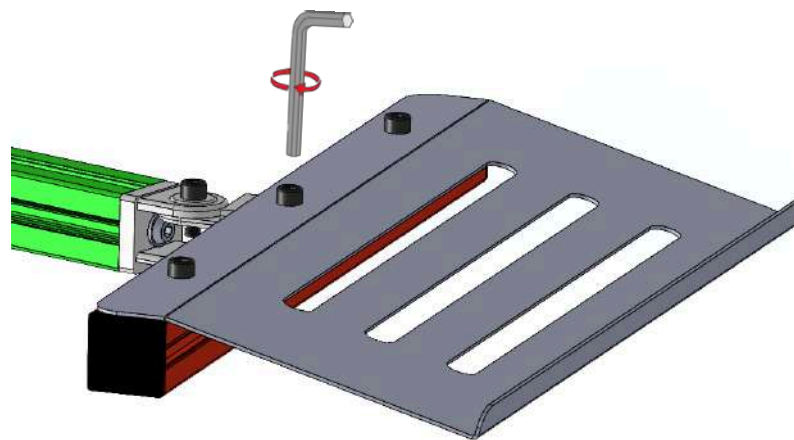
1

Mount the end caps as shown.



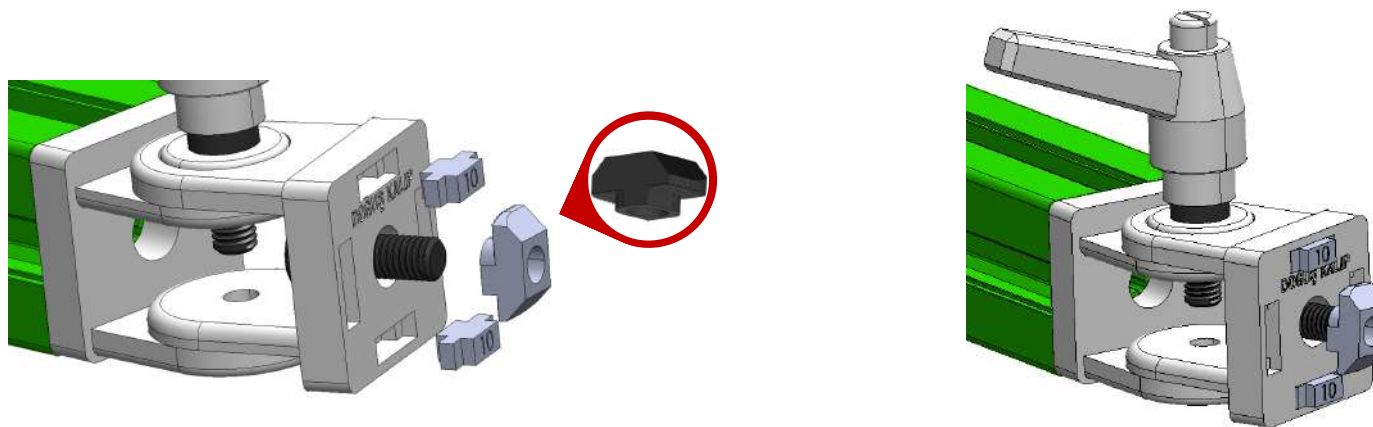
2

Mount the keyboard plate on 40-40-475 with using hammerhead nuts.



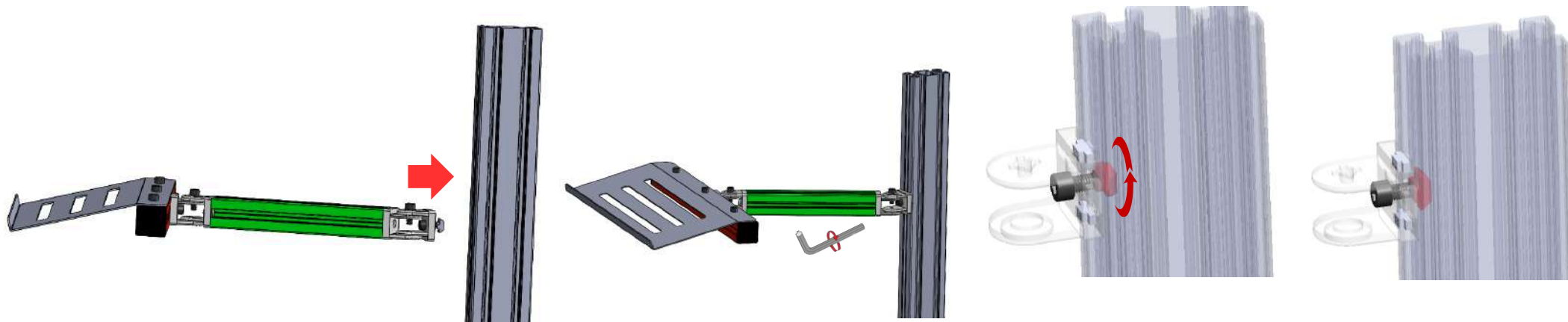


# 6



## 1

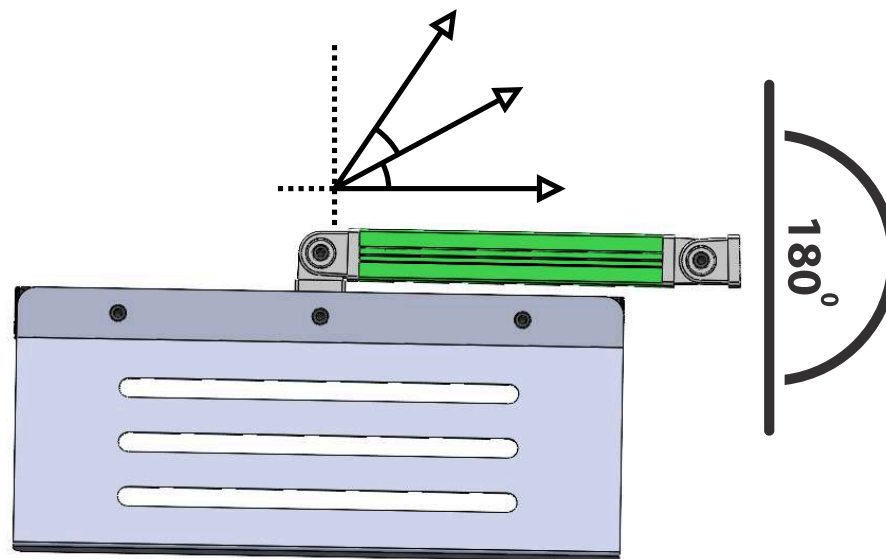
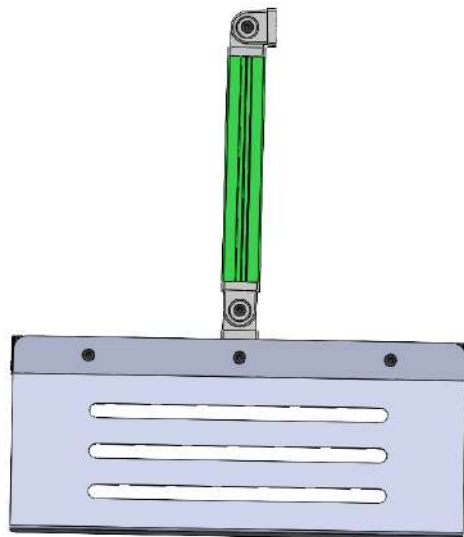
**Place the slot converters, hammerhead nut and M8x20 Socket Head Cap as shown.**



## 2

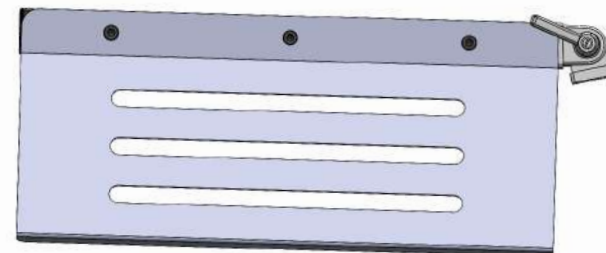
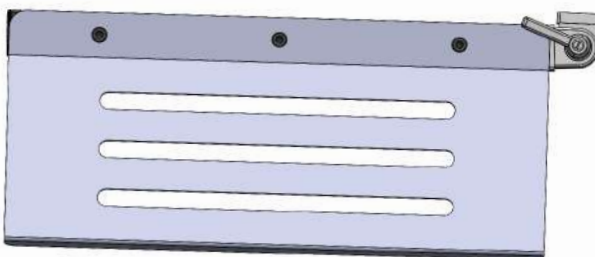
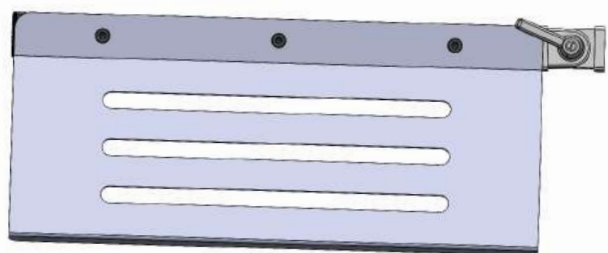
**Mount the keyboard kit on steering profile of cockpit.**

?



1

You can adjust the angle of the keyboard  
with using hex key or clamp lever.



2

