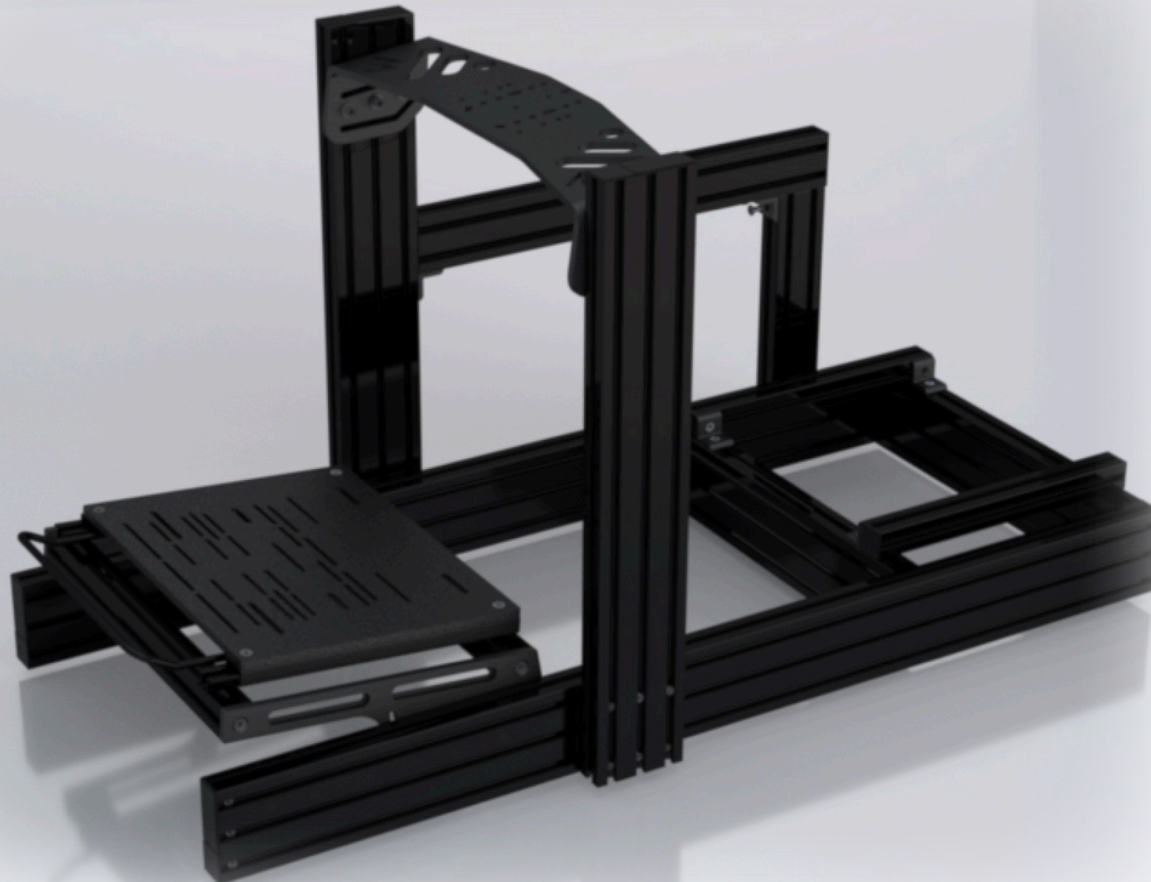




ALPHA

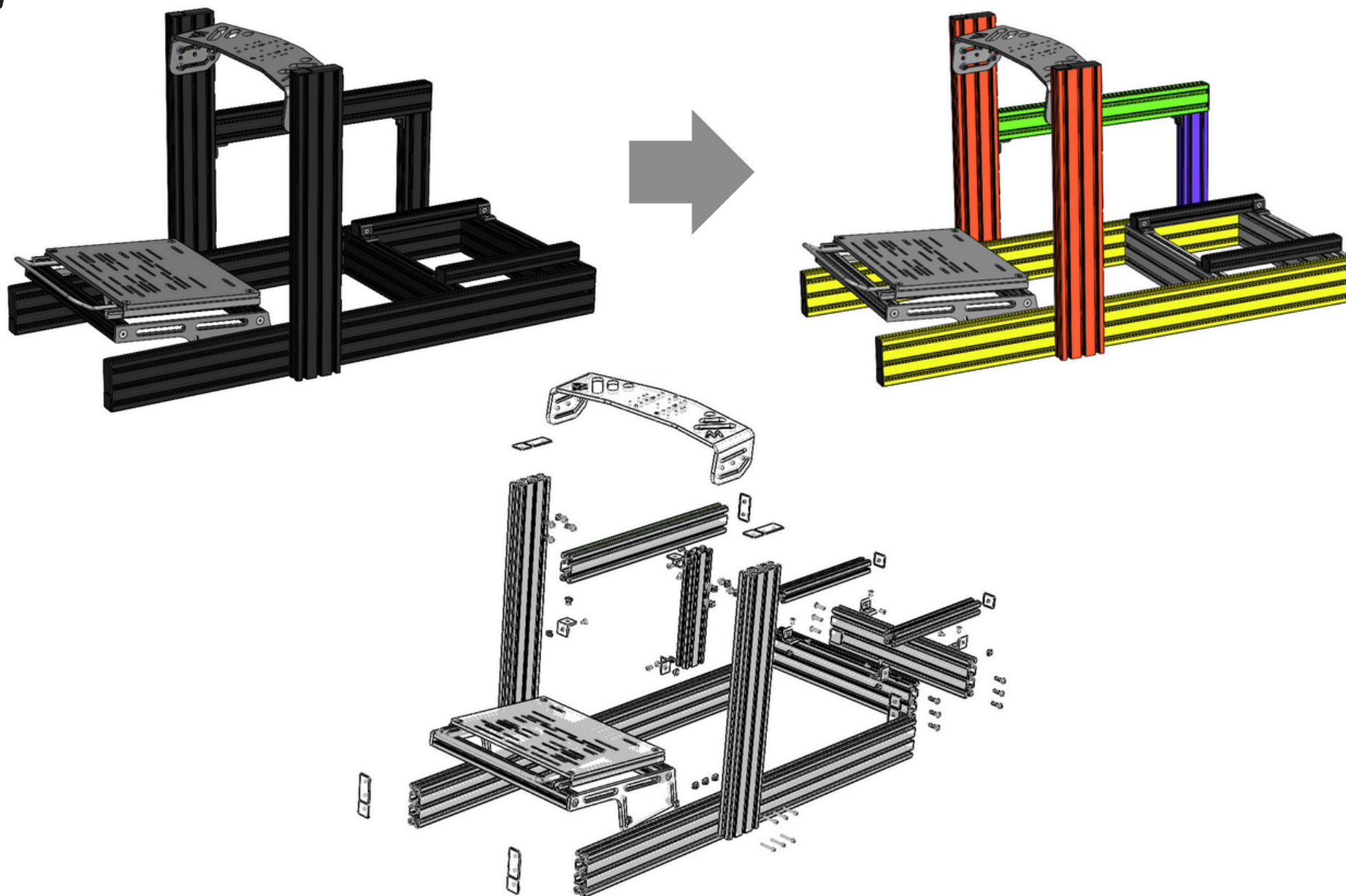


COCKPIT ASSEMBLY GUIDE



Visit our website for more information
www.wolfracing.eu

1

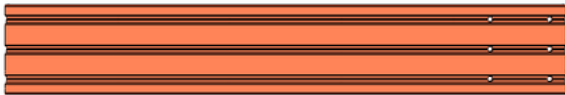


Cockpit components are shown in different colors for assembly.

--- COCKPIT COMPONENTS ---



40-80-1350 (2x)



40-120-750 (2x)



40-80-650 / 40-80-650 (1x)



40-120-520 (2x)

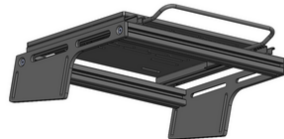
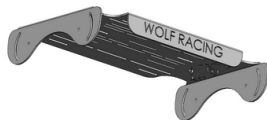


40-40-400 (2x)



40-80-360 (1x) (Optional)

Pedal system
(x1)



M6x40 Socket Head Cap
(x12)



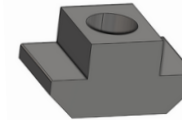
M10x30 Button flange head
(x12)



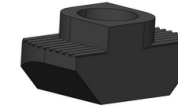
M8x16 Countersunk Screw
(x16)



M6x16 Socket Head Cap
(x8)



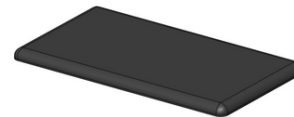
M6 T-Slot Nut
(x20)



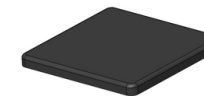
M8 Hammerhead Nut
(x16)



Cover Profile
(x4)



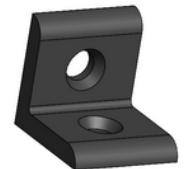
40x120 END CAP
(x11)



40x40 END CAP
(x12)

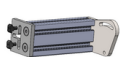


M6 Flat Washer
(x12)

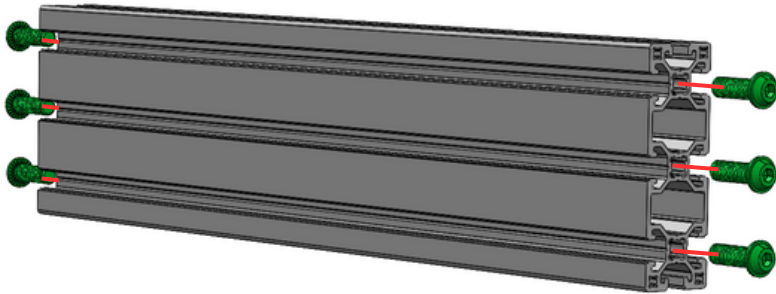


40x40 Angle Bracket
(x8)

Steering
system (x1)

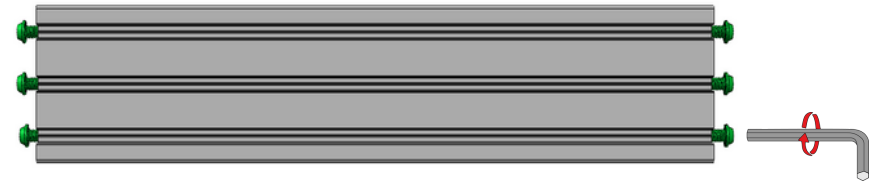


3



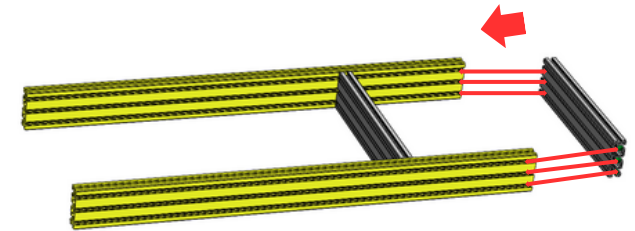
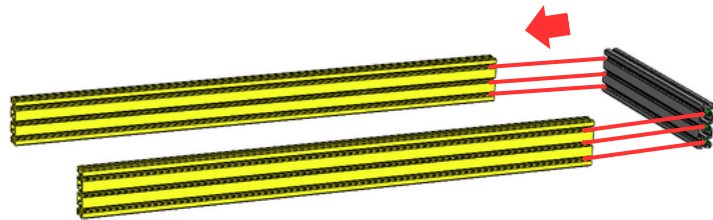
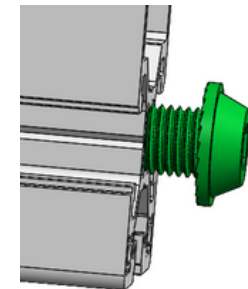
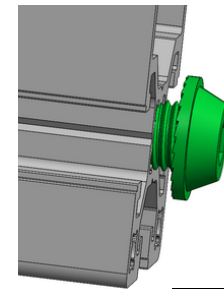
1

Attach the screws to both 40-120-520 profiles as shown in the figure.

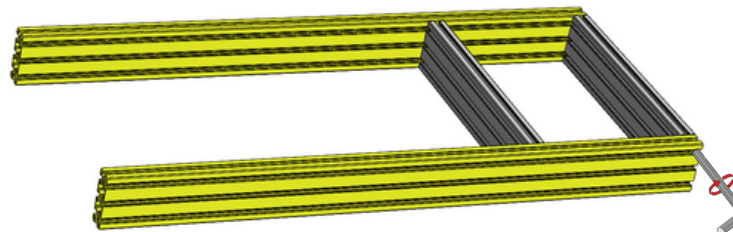


Use hex key to tighten all screws to approximately **1 cm**.
(Otherwise the screw heads will not pass through the canal.)

2



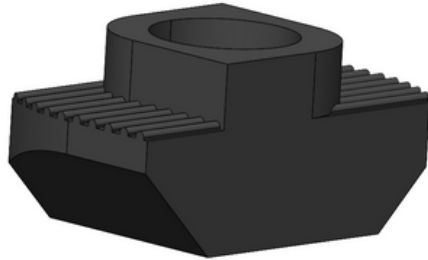
3



Place the screws of 40-120-520 profile to canal of 40-120-1350 profiles, and then align the screw heads with holes of 40-120-1350 profiles; after that tighten all the screws completely with the help of the number 8 hex key.



--- Use Of Hammerhead Nut ---



Hammerhead Nut helps to connect 2 different profile to each other. Unlike the T-slot nut, the hammerhead nut does not have to be installed from the side of profile, it can be inserted directly into the canal.

The hammerhead nut is initially tightened just enough to hold the screw, not completely; Otherwise, the requirement space for connecting will be eliminated. **(Illustration 1)**. The hammerhead nut, which is properly attached to the screw, is inserted into the canal. **(Illustration 2)** and tighten clockwise with the help of an hex key. **(Illustration 3)**. The hammerhead nut moves to the position shown in **(Illustration 4)** and engages with the profile.

If hammerhead nut would not turn inside of the canal it would not connect with other profile

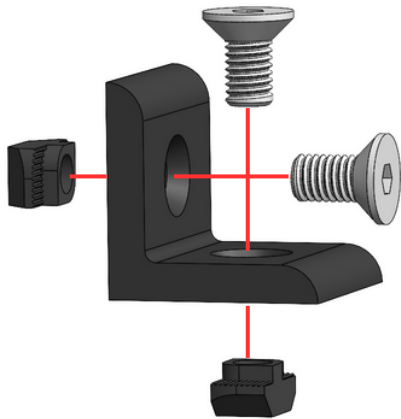


Illustration 1

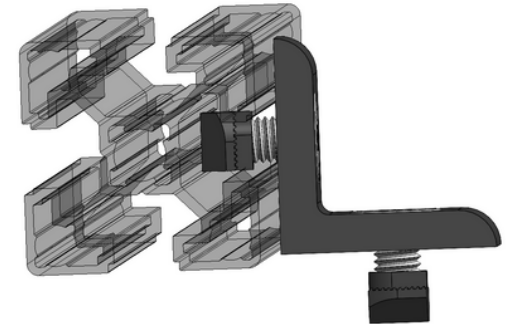
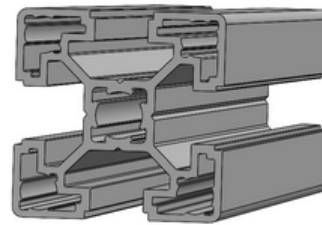
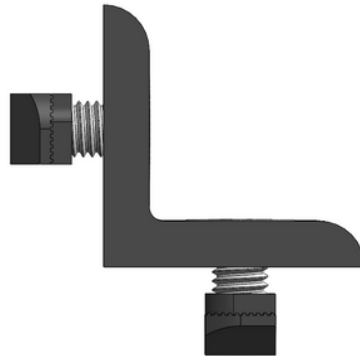


Illustration 2

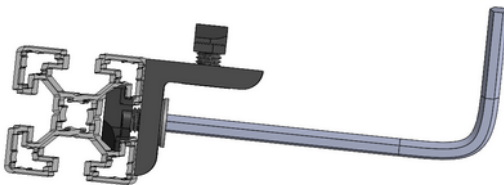


Illustration 3

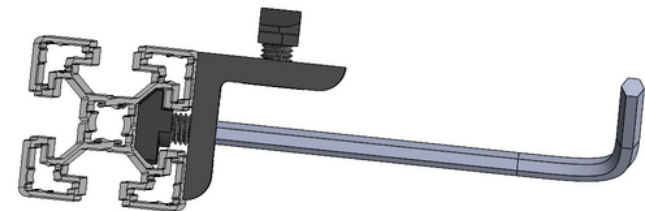
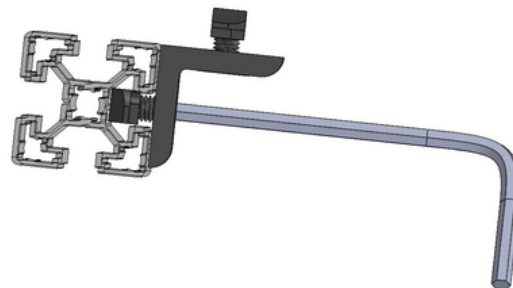
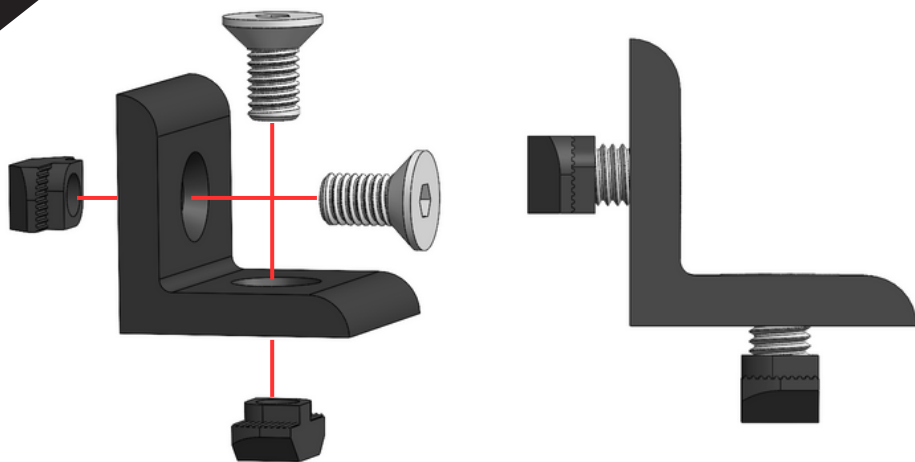


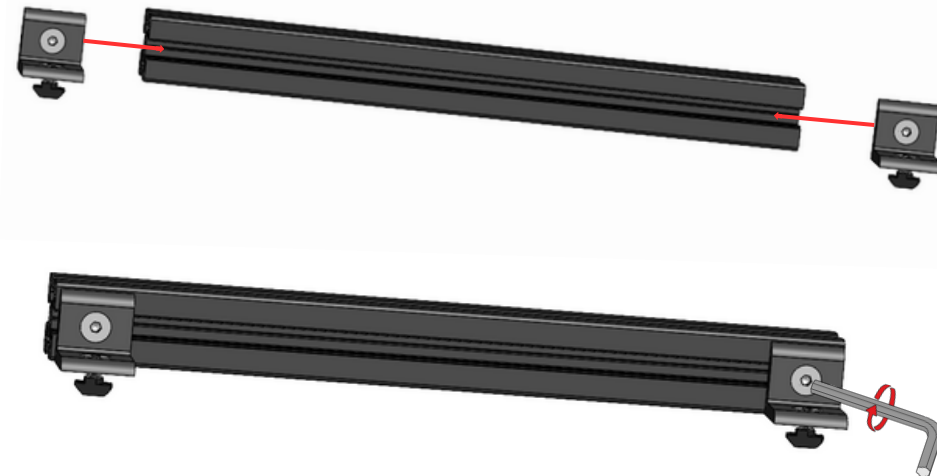
Illustration 4

4



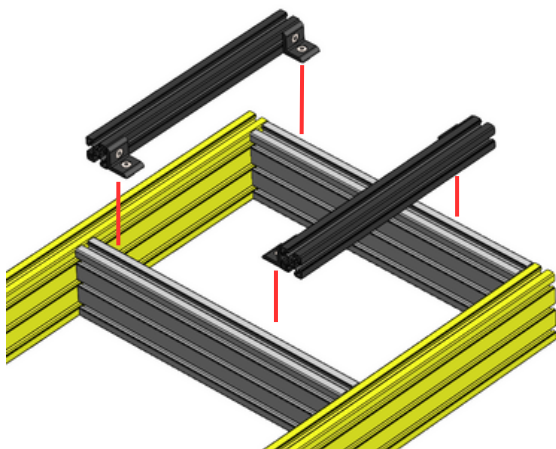
1

Attach T-Slot Nut screws with angle brackets, leaving approximately 1 cm space between them.



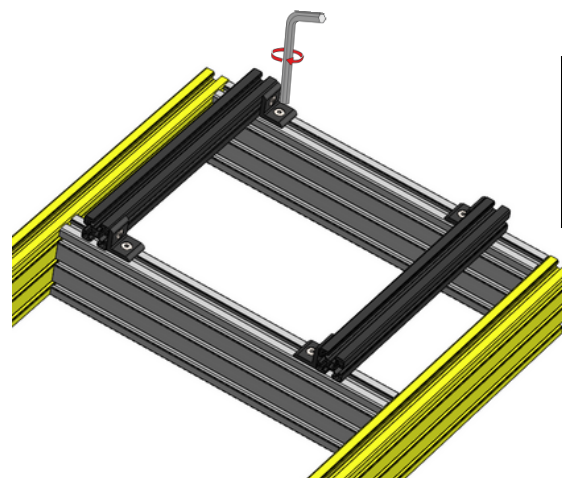
2

Align and mount the angle brackets to 40-40-400 profile edges.



3

Mount the profiles you assembled on page 1 with the profiles you assembled on page 4, as shown in the illustration.



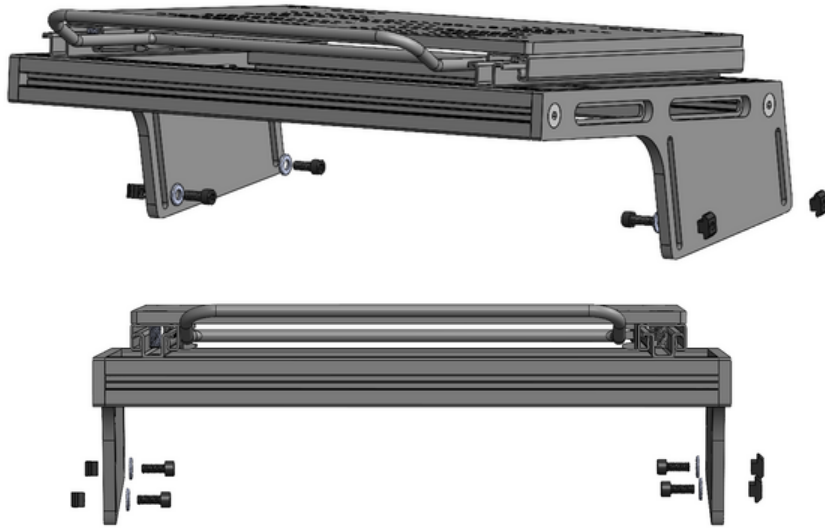
4

After adjusting your distance relative to your seat, fix the parts with the help of a hex key.

For Wolf Racing seats, leave a gap of 72 mm on both sides between the yellow profiles and the black profiles.

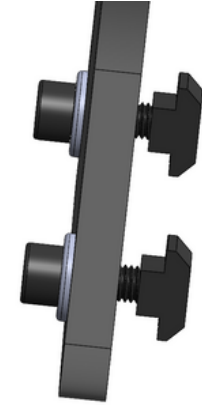
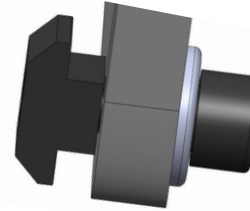
5

--- Mounting for Slide Pedal System ---



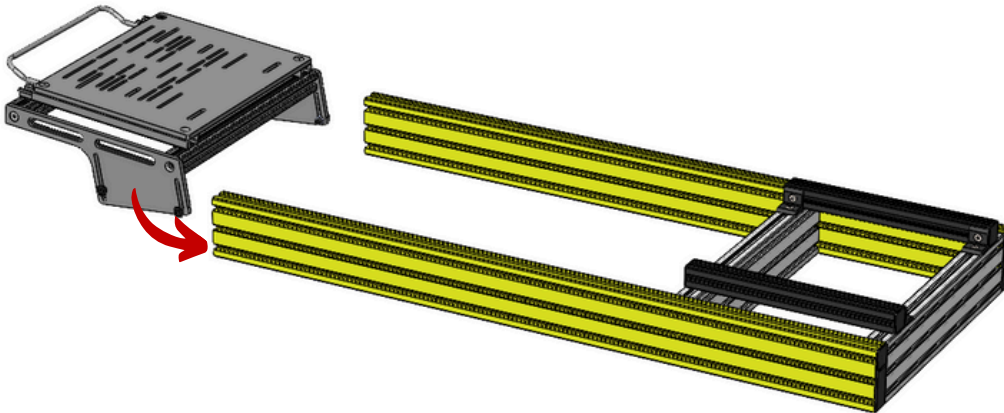
1

Assemble the screws, washers and T channel nuts in the direction and quantity specified in the illustration.



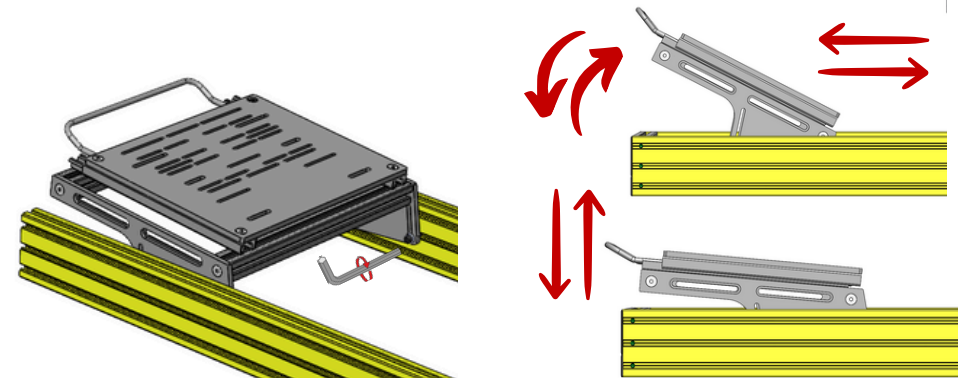
2

Install all screws leaving approximately 1 cm of space between surface.



3

Place the pedal systems screws to the 40-120-1350 profile canals.



4

You can adjust the pedal systems distance and angle as you want. After making the appropriate adjustment, tightening the screws with the help of an hex key.

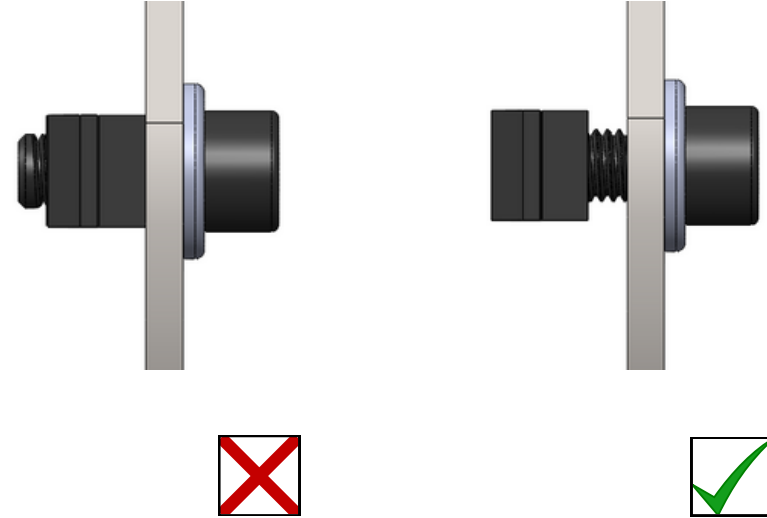
6

--- Mounting for Standard Pedal System ---



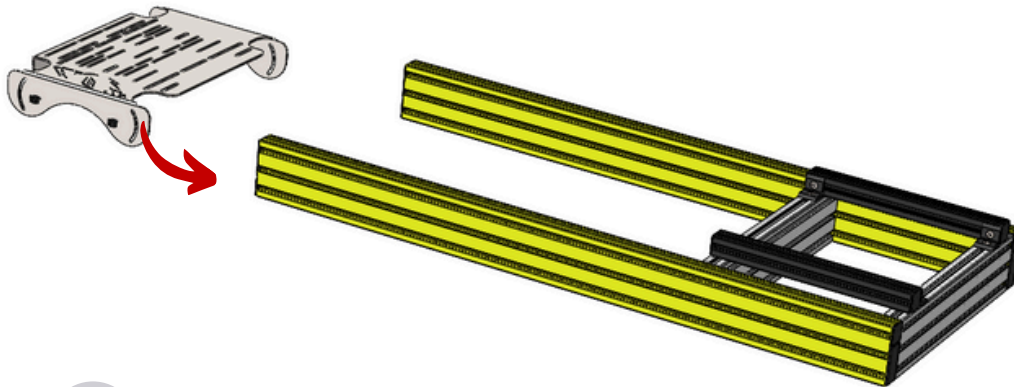
1

Assemble the screws, washers and T channel nuts in the direction and quantity specified in the illustration.



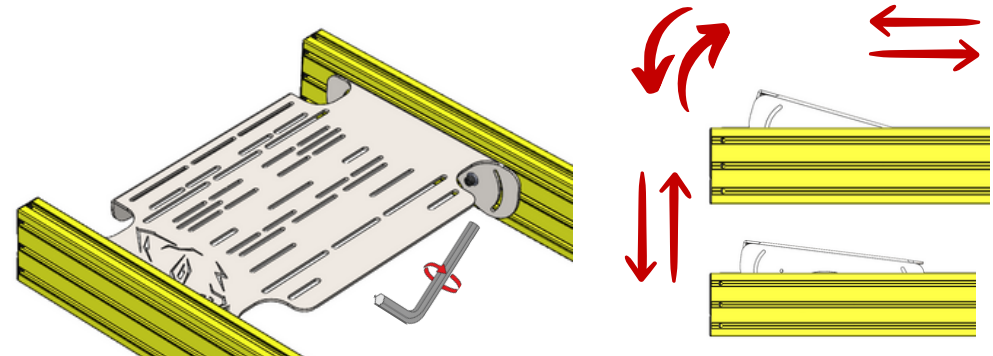
2

Install all screws leaving approximately 1 cm of space between surface.



3

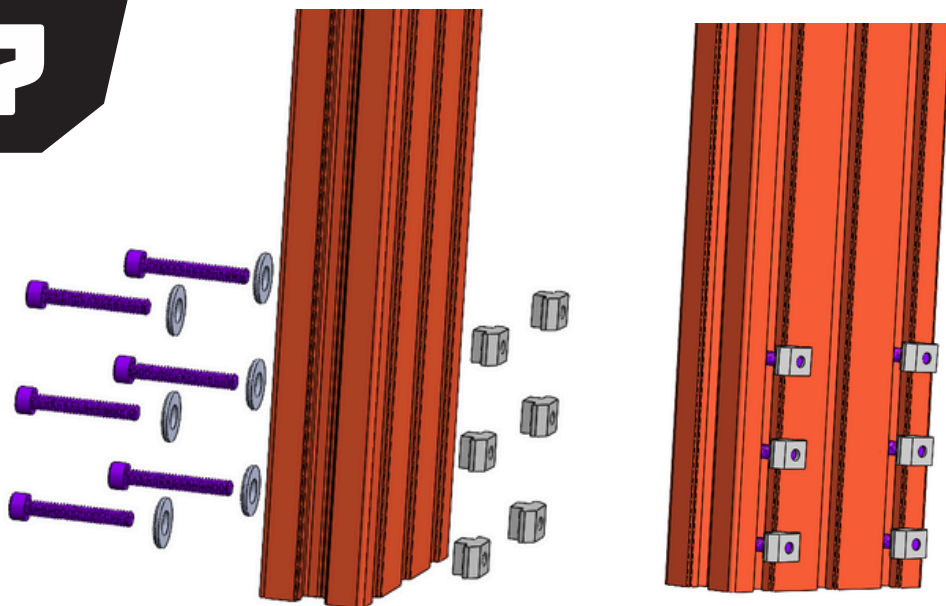
Place the pedal systems screws to the 40-120-1350 profile canals.



4

You can adjust the pedal systems distance and angle as you want. After making the appropriate adjustment, tightening the screws with the help of an hex key.

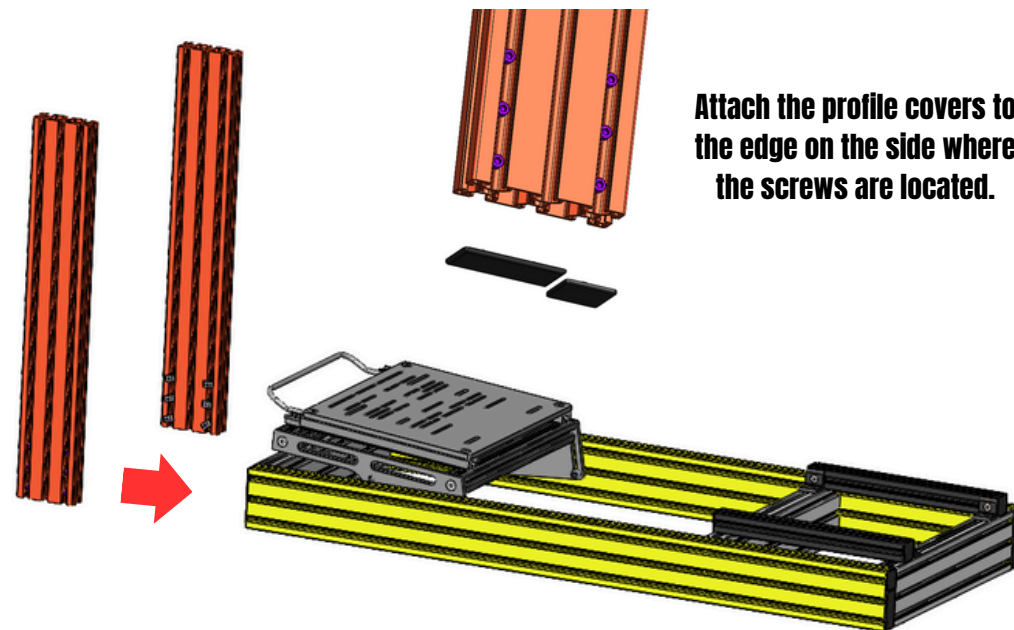
?



1

Insert the specified components to the holes of both 40-120-750 profile as shown at the illustration.

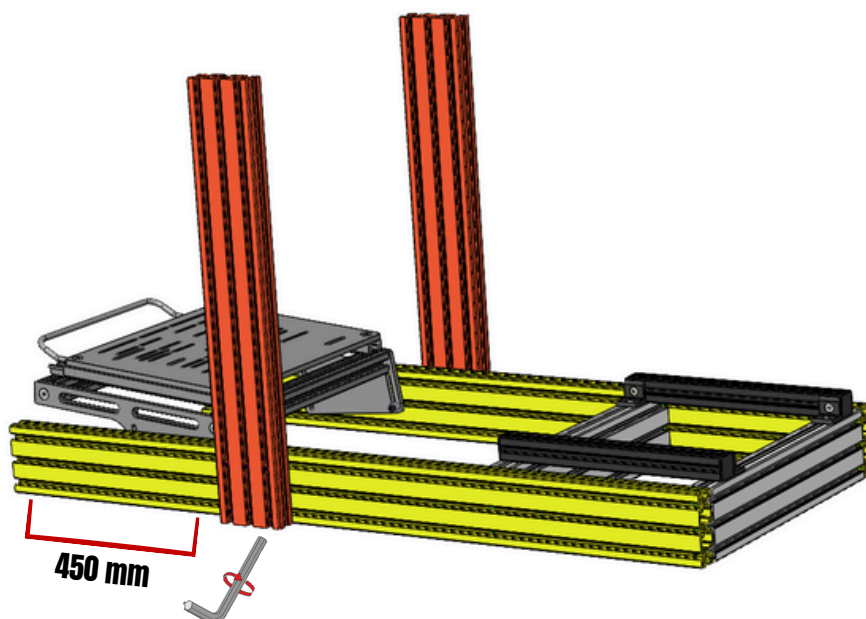
2



Attach the profile covers to the edge on the side where the screws are located.

Attach the parts you have prepared so that they fit into the canals of the profiles indicated in yellow.

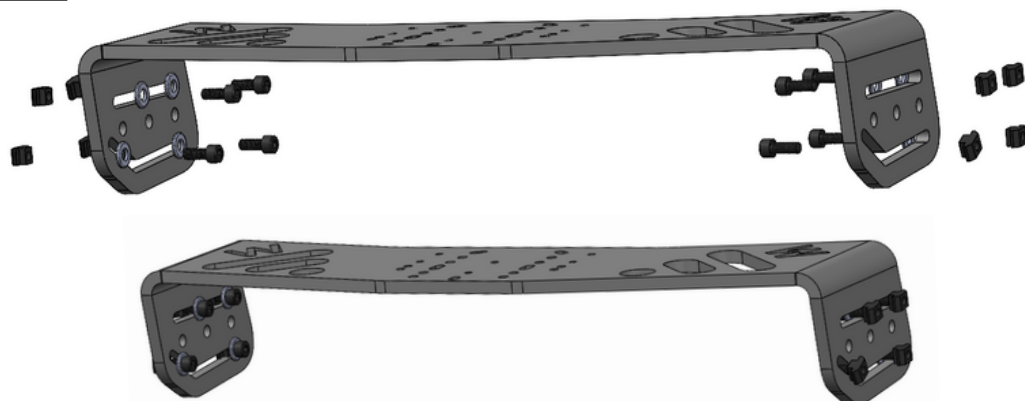
3



Bring the profiles to the desired distance so that both profiles are at the same distance and fix them by tightening them with a hex key. (It is recommended to leave a distance of 450 mm from the pedal side of the yellow profile.)

8

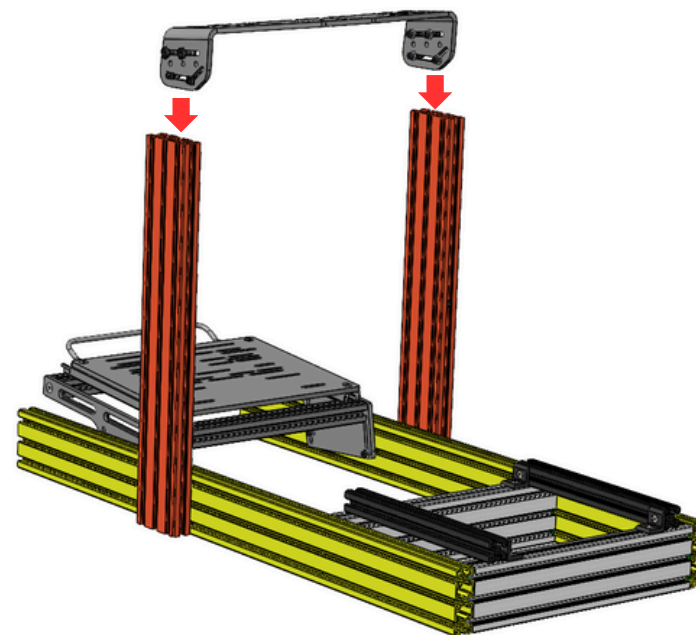
--- Universal Steering Plate ---



1

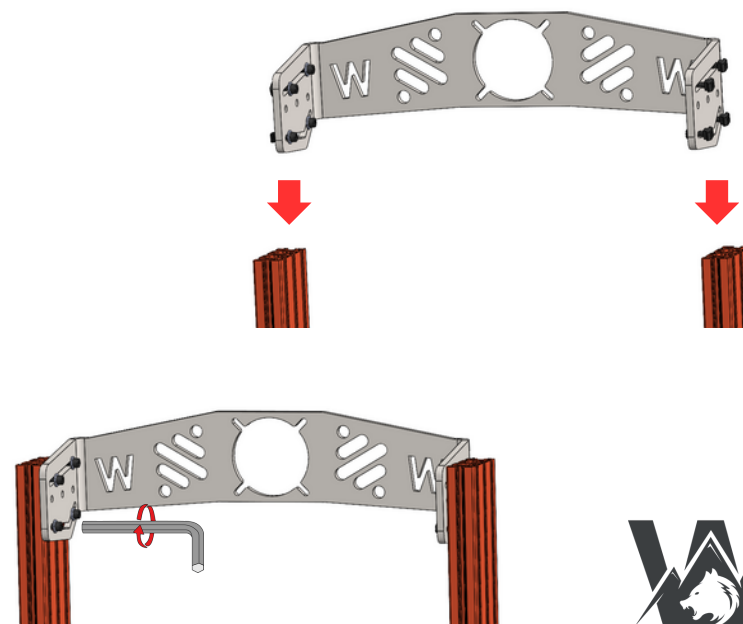
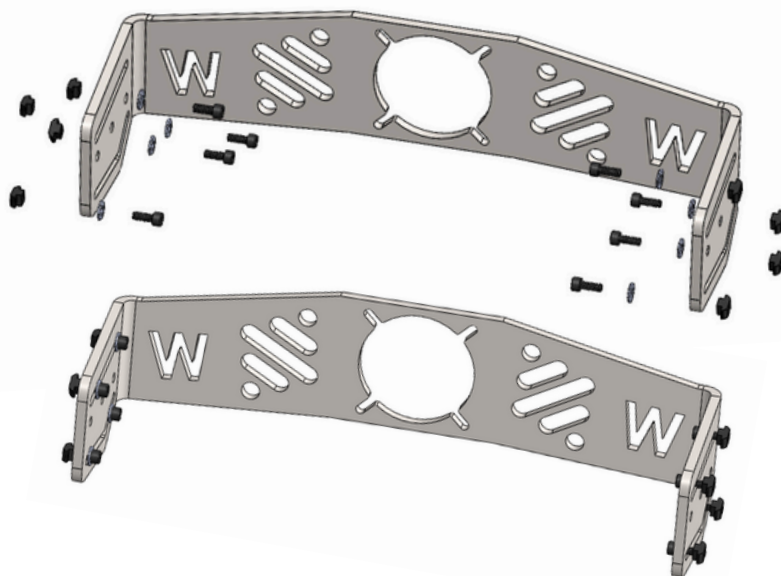
Assemble the screws, washers and T channel nuts in the direction and quantity specified in the illustration.

2



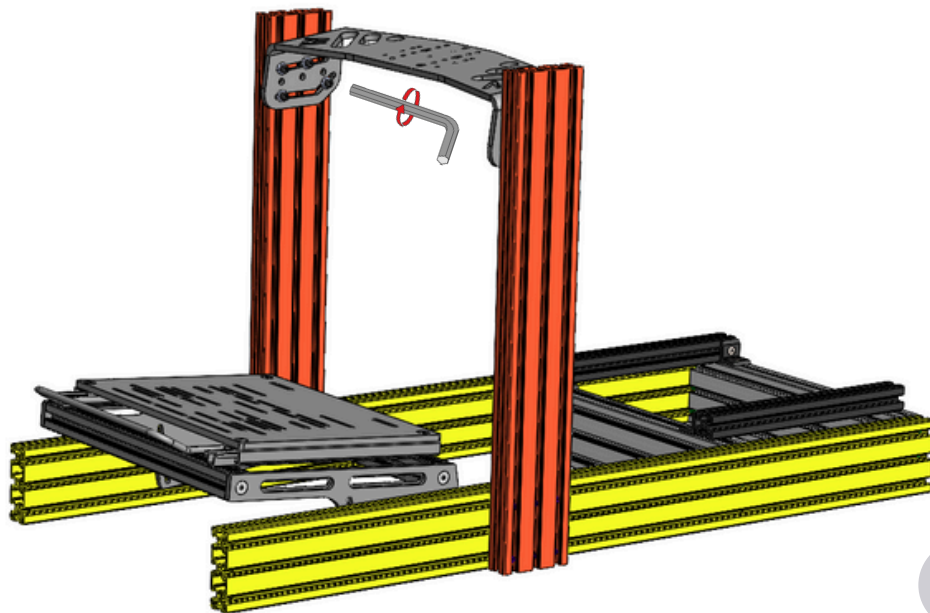
Install the T canal nuts on the steering plate so that they could fit to the canals of the profile indicated in orange.

--- Simucube Steering Plate (10 mm) ---

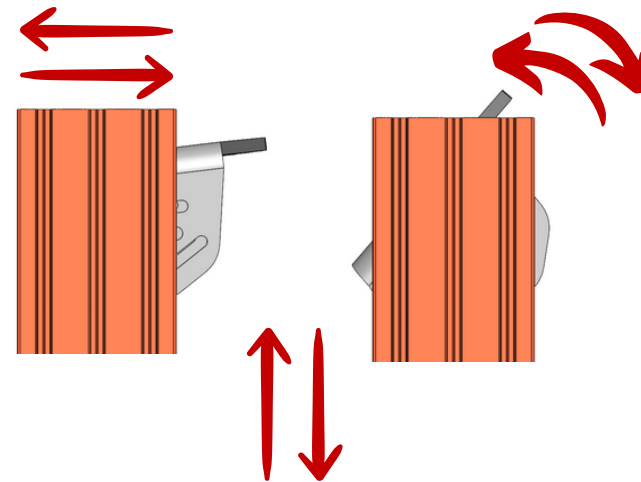


--- Universal Steering Plate ---

1

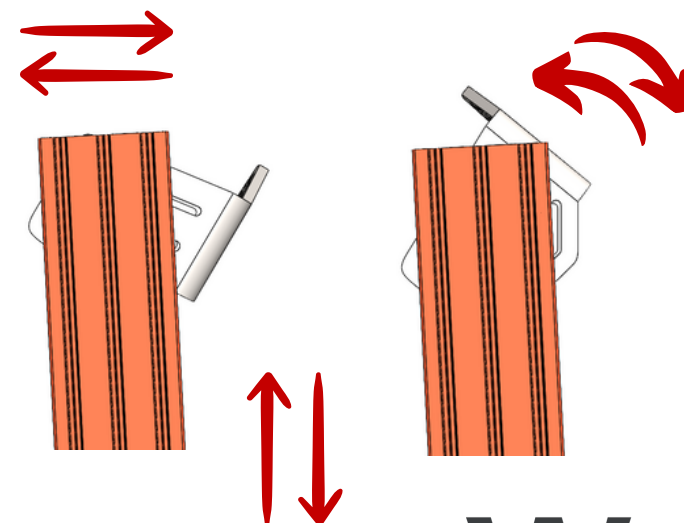
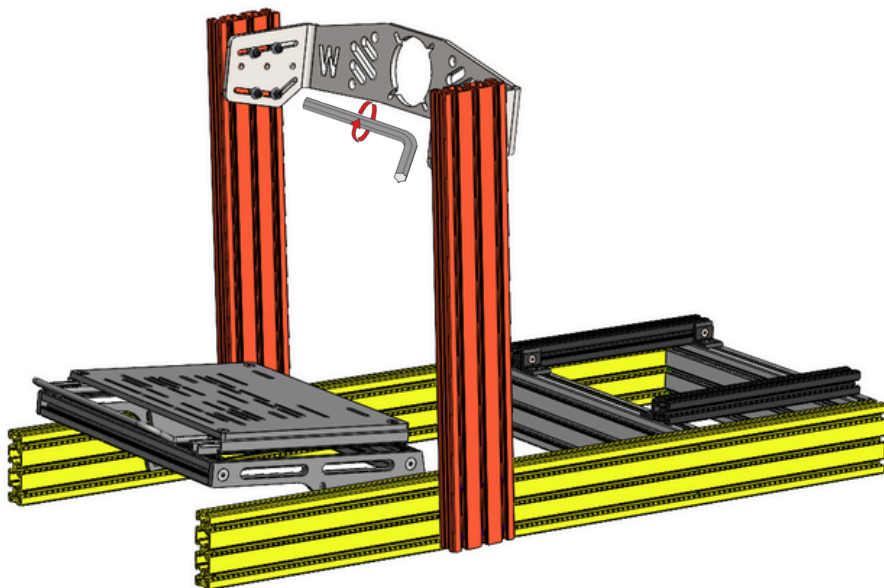


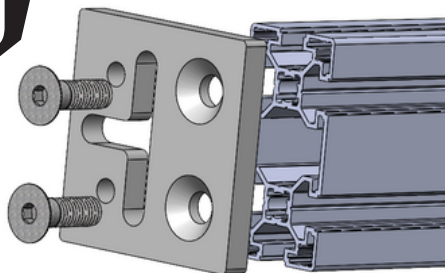
2



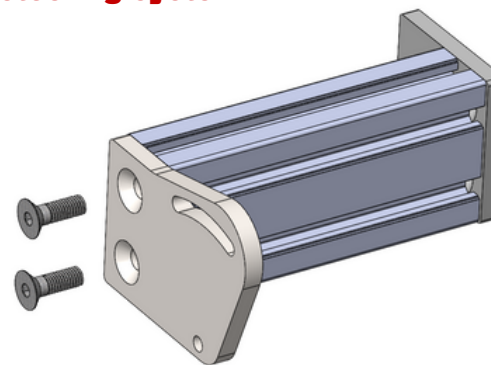
After bringing the steering plate to the desired angle and height, fix it by tightening it with the help of a hex key.

--- Simucube Steering Plate (10 mm) ---

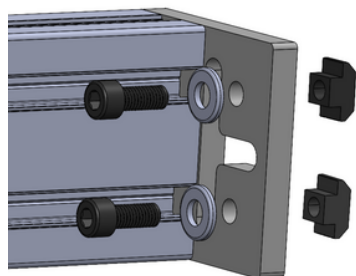
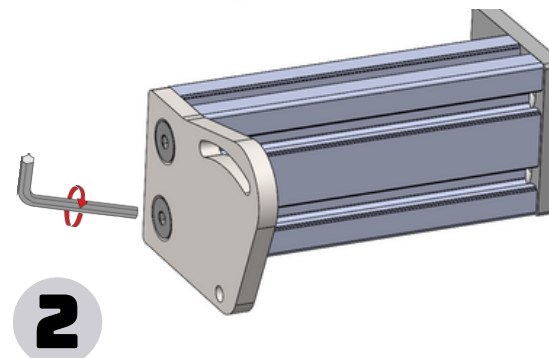
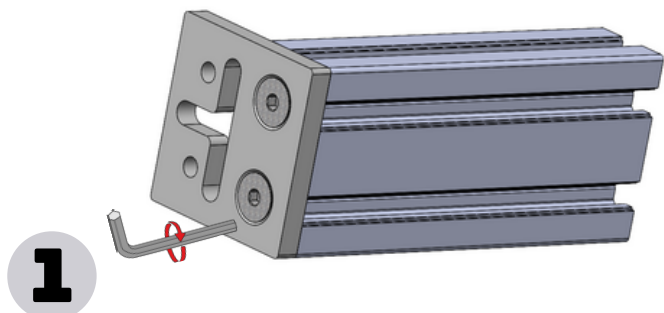




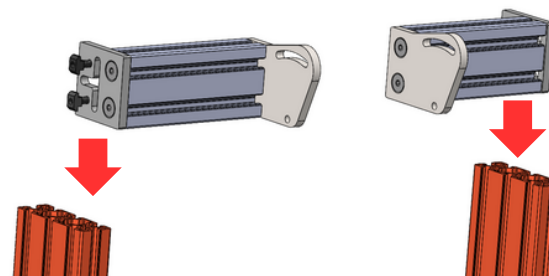
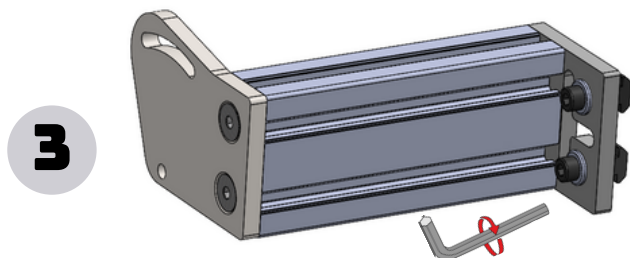
Assemble the parts as specified at illustration with M10x30 mm countersunk screws as shown. (Do the same for both profile pieces.)



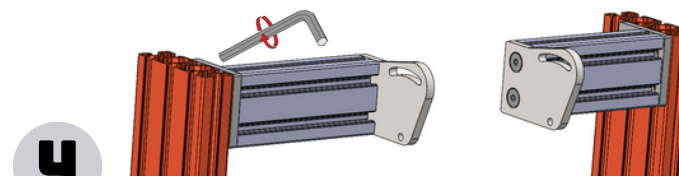
Assemble the parts given at the illustration with an M10 countersunk screw as shown. (Do the same for both profile pieces.)

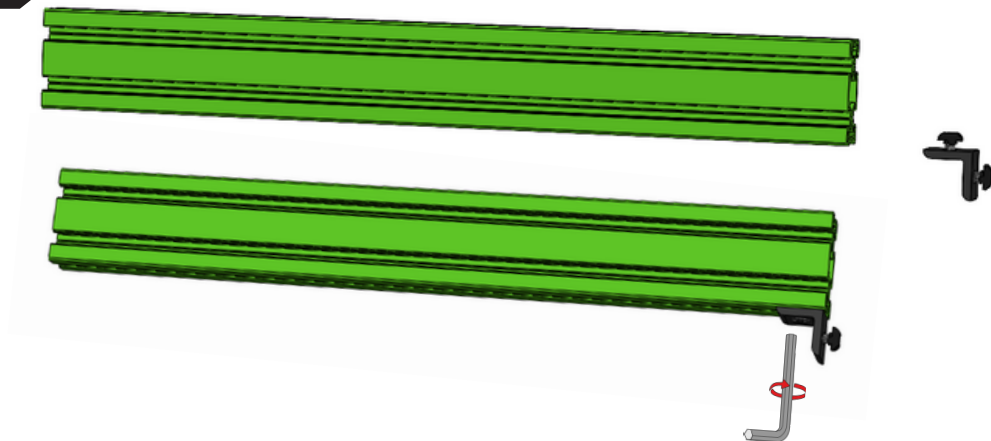


Mount the components which specified at the illustration (T-slot nut, M8x20 socket head cap,) Attach it to the piece you prepared as shown in the illustration. (Do the same for both profile.)



Attach the steering system you prepared to the main body. After adjusting the pieces to the desired height align profiles to each other and Secure it by tightening it with the help of a hex key.





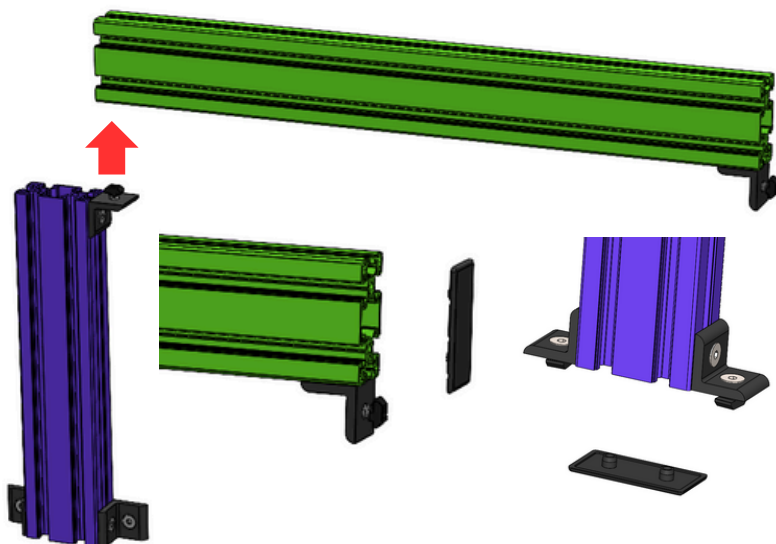
1

Attach the angle bracket which is you prepared previously to the profile specified as green and tighten it with the help of a hex key so that it protrudes 2 mm.



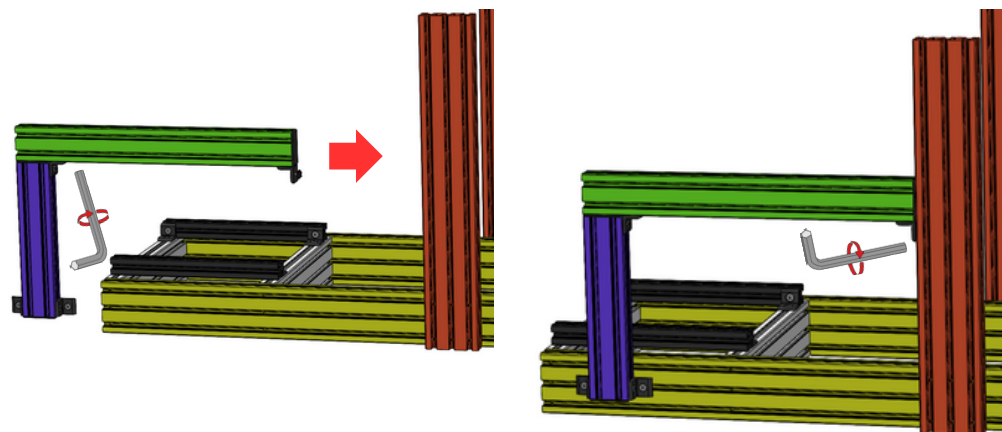
2

Do the same process to the profile specified as blue, but this time align the angle brackets to the profile end.



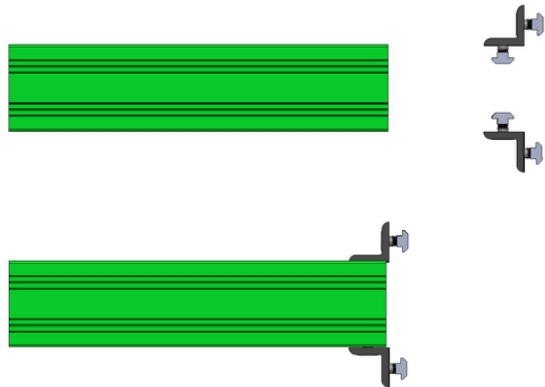
3

Mount the end caps as shown and mount both profile (green and blue) to each other as specified.



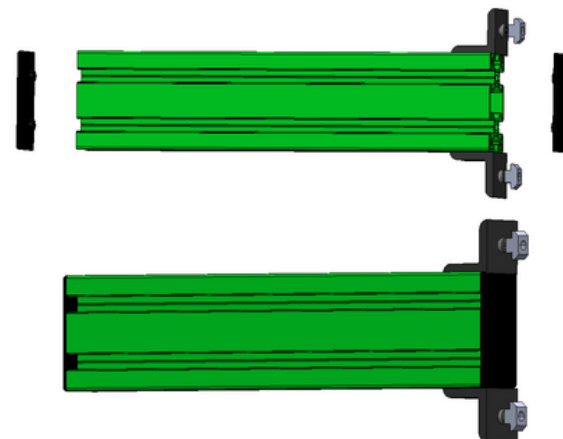
4

Fix the gearshift profile you have prepared to the main body by tightening it with the help of a hex key.



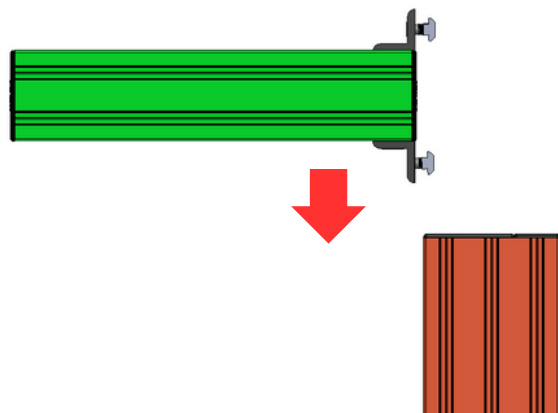
1

Attach the angle bracket which is you prepared previously to the profile specified as green and tighten it with the help of a hex key so that it protrudes 2 mm.



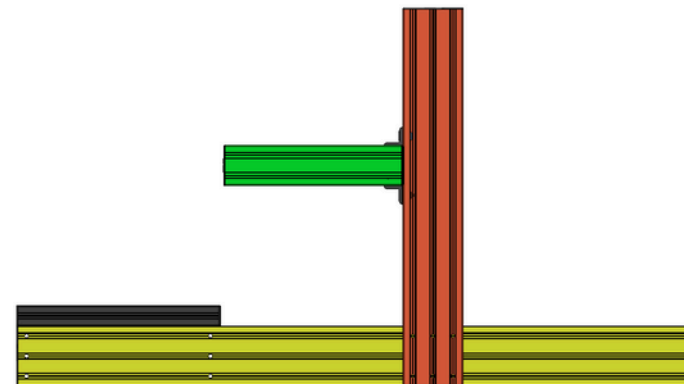
2

Mount the end caps as shown.



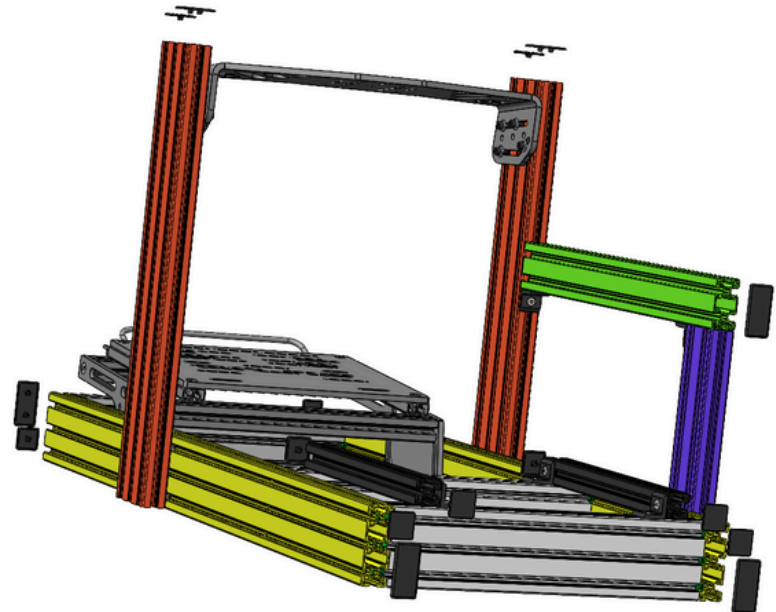
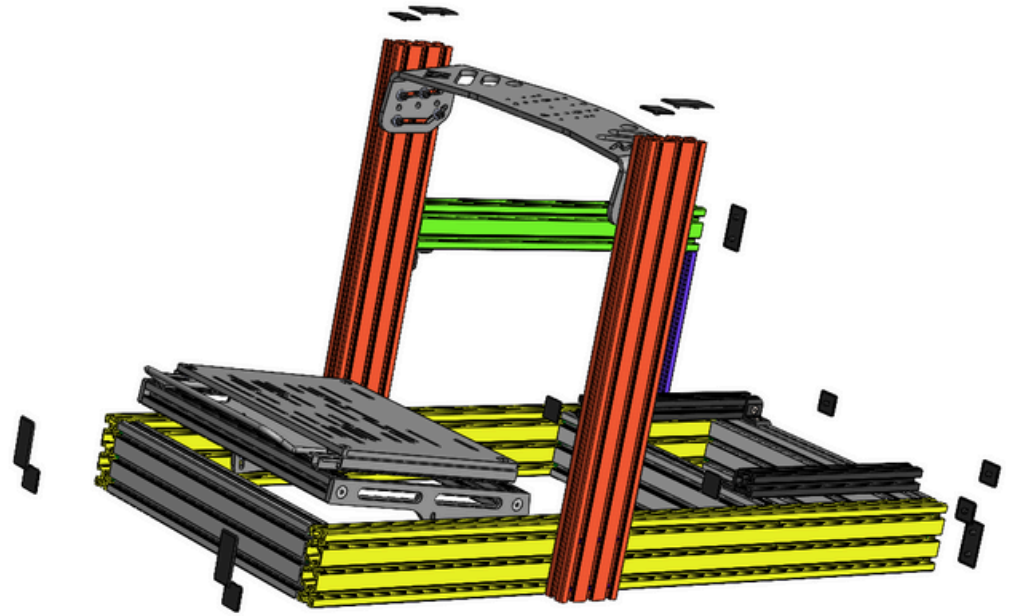
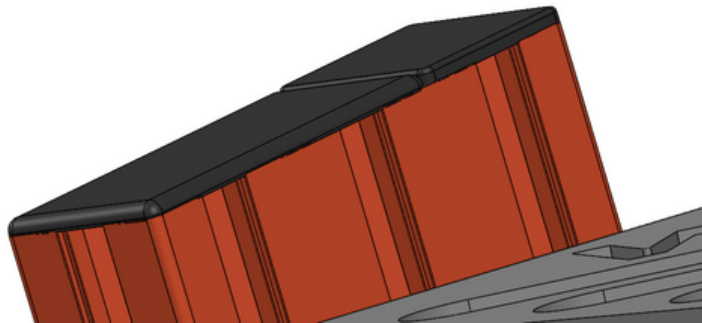
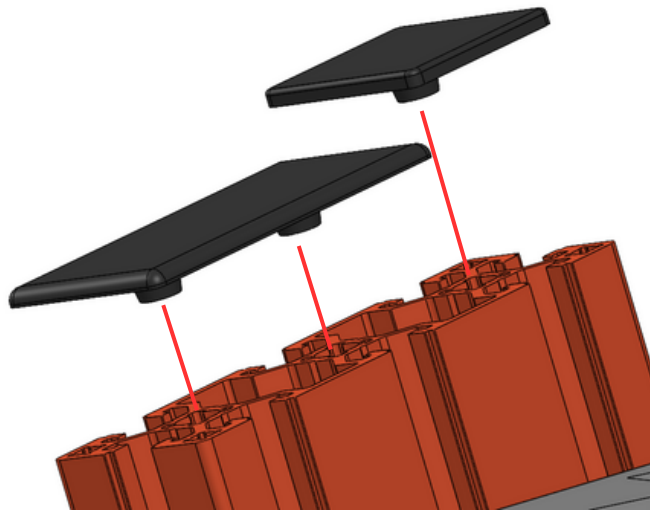
3

Fix the gearshift profile you have prepared to the main body by tightening it with the help of a hex key.

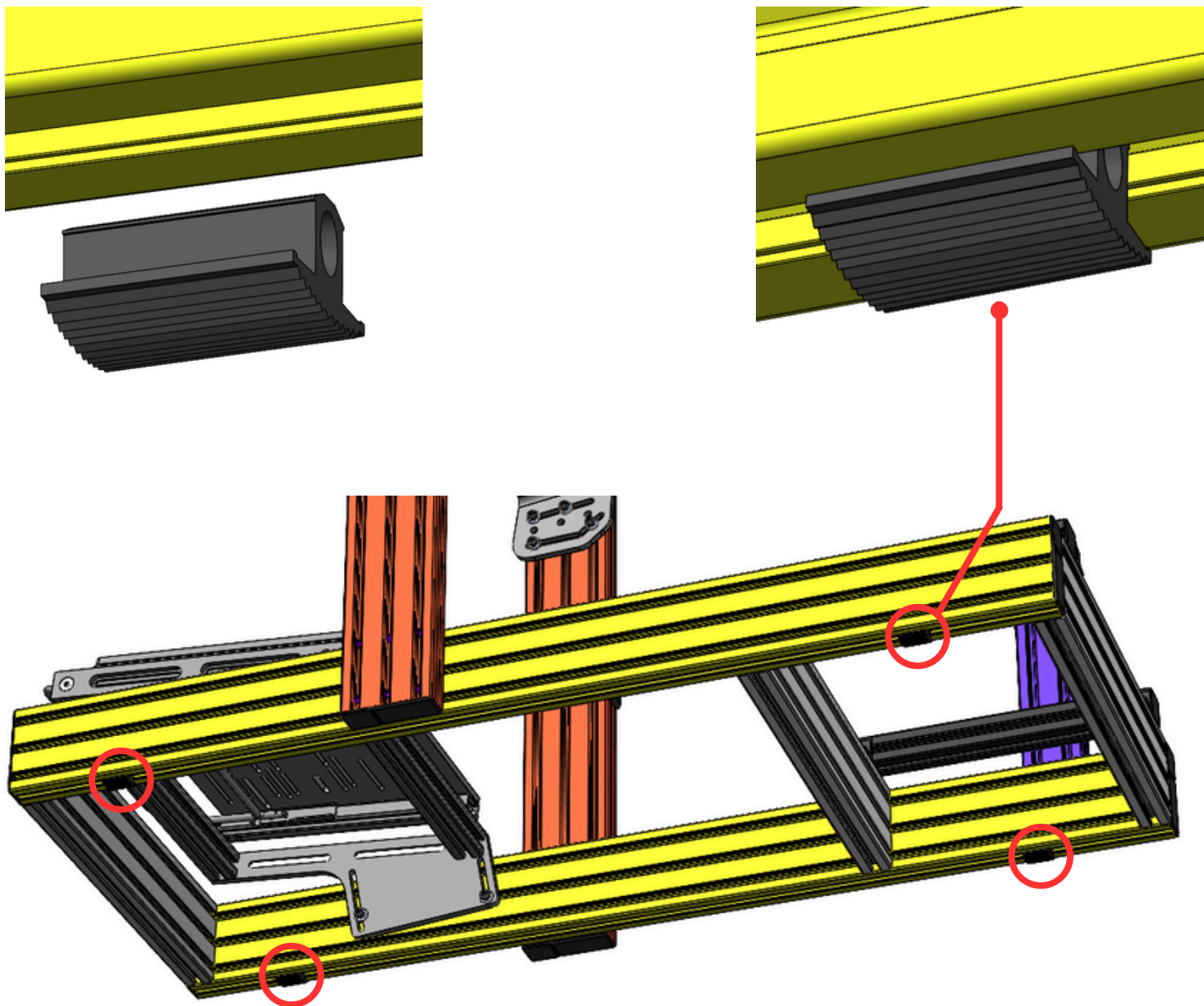


4

Fix the gearshift profile you have prepared to the main body by tightening it with the help of a hex key.



Mount the end caps as shown.



Place the cover profiles as shown.

