



Fenrir



COCKPIT ASSEMBLY GUIDE





Visit our website for more information
www.wolfracing.eu

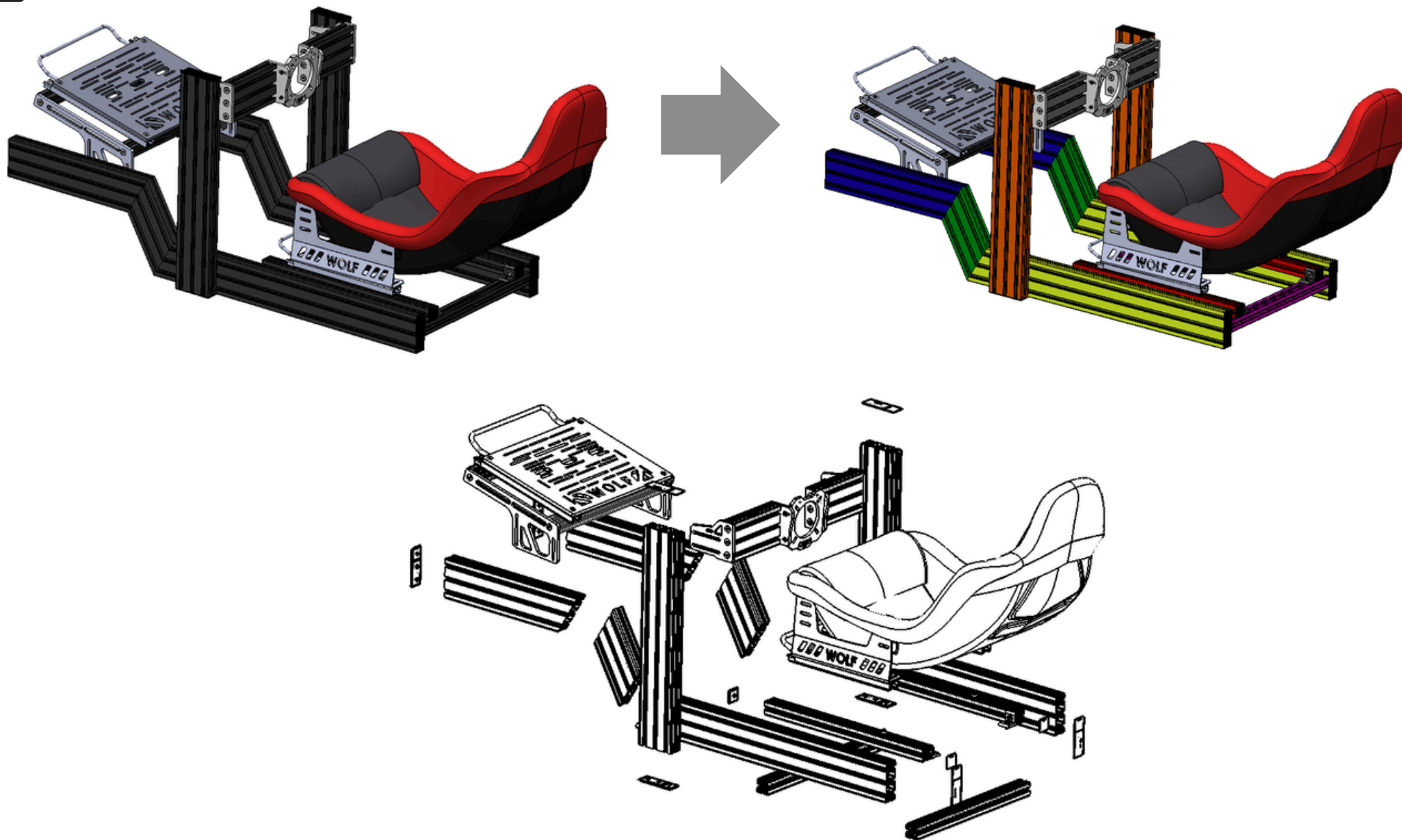


WEBSITE

--- Attention During Installation ---

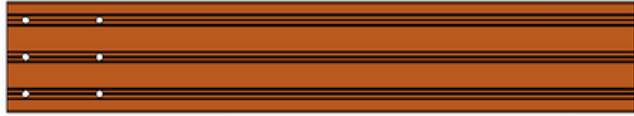
- 
- It is recommended that the installation be performed by at least two people.
 - Aluminum shavings may have adhered to the protective film on the profiles; therefore, it is advised to perform the installation on an easily cleanable surface.
 - Following the indicated sequence during installation is essential.
- 

2



Cockpit components are shown in different colors for assembly.

--- COCKPIT COMPONENTS ---



40-120-680 (2x)



40-120-950 "Angled" (2x)



40-120-500 "Angled" (2x)



40-120-269 "Angled" (2x)



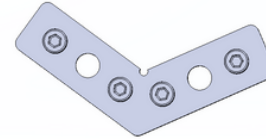
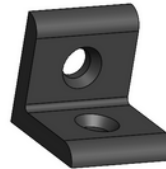
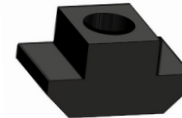
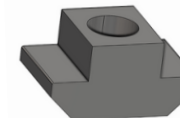
40-40-600 (2x)



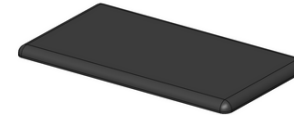
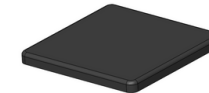
40-40-520 (2x)



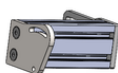
G-Ray Sliding Seat

30x30 120° Connection
Part (x12)M8x16 Countersunk Screw
(x16)M6x40 Socket Head Cap Screw
(x12)40x40 Angle Bracket
(x8)M8 T-Slot Nut
(x16)M6 T-Slot Nut
(x12)Cover Profile
(x4)Pedal system
(x1)

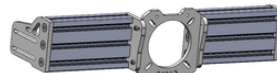
Sliding

40x80 End Cap
(x8)40x40 End Cap
(x12)M6 Flat Washer
(x12)Steering system
(x1)

Fanatec Side Mounting Kit



Simucube Mounting Kit

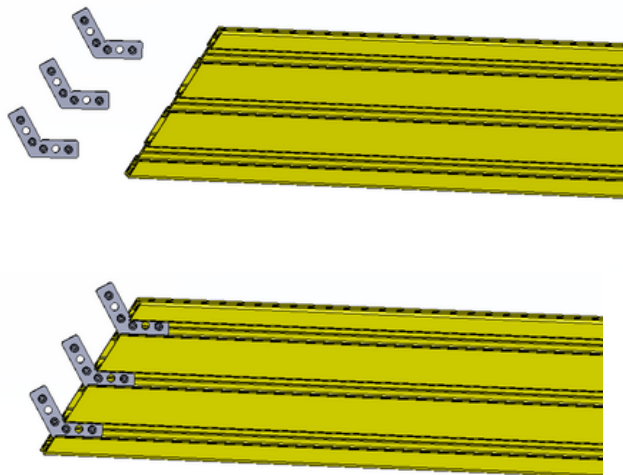


Simucube Steering Plate



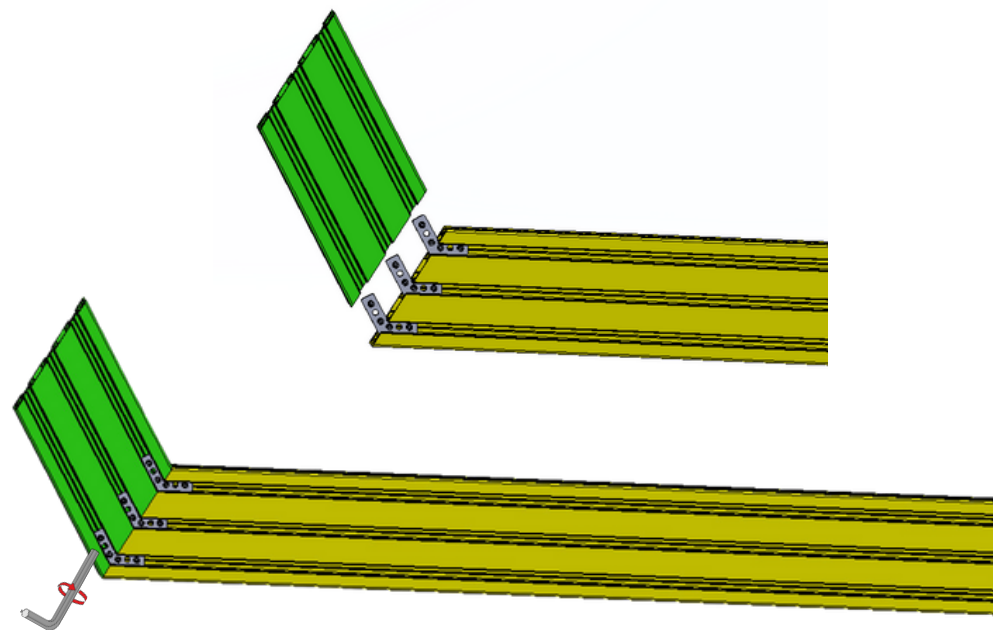
Universal Steering Plate

4



1

Attach the graduated connection parts to the profile indicated in yellow as shown in the illustration. (x2)



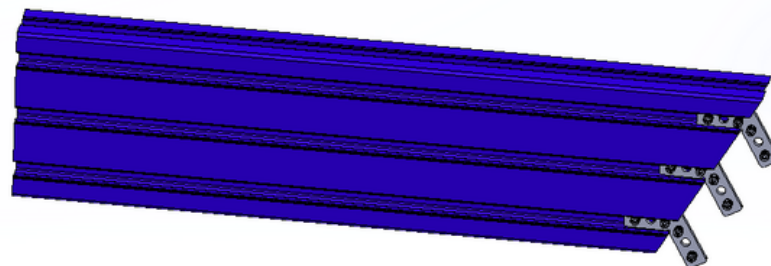
2

Join the prepared profile with the profile indicated in green as shown in the illustration and tighten it using a hex key to secure it in place. (x2)

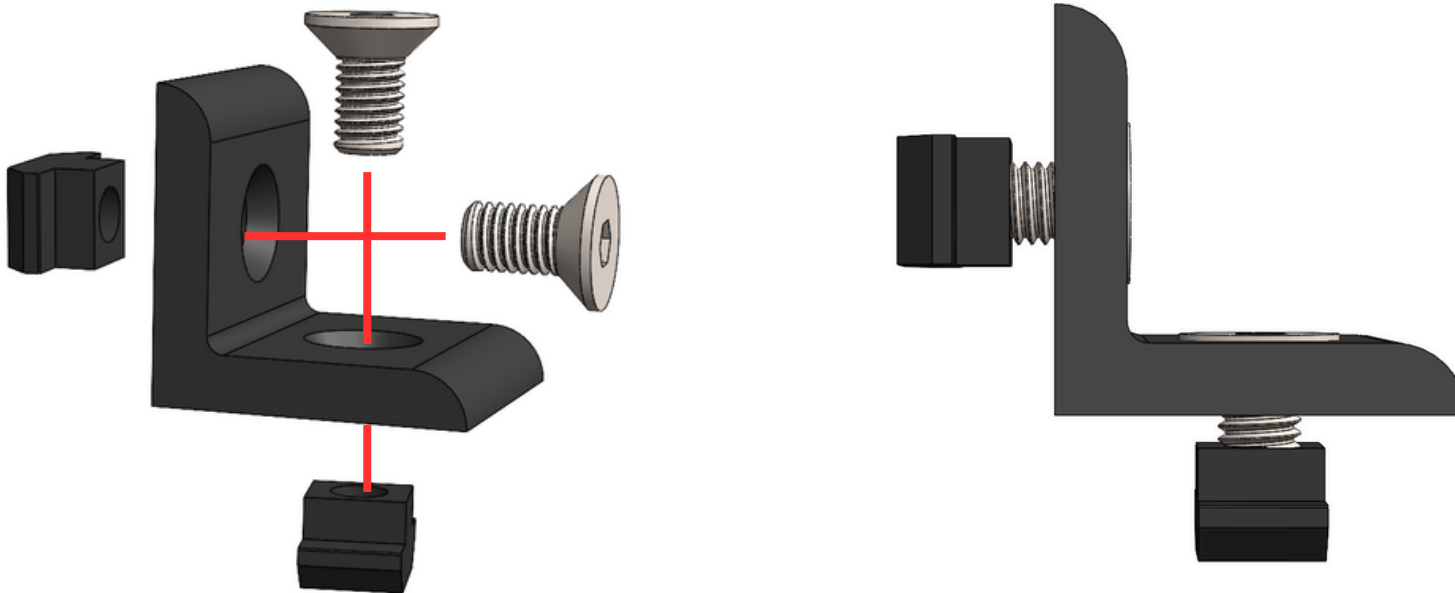


3

Attach the graduated connection parts to the profile indicated in blue as shown in the illustration. (x2)

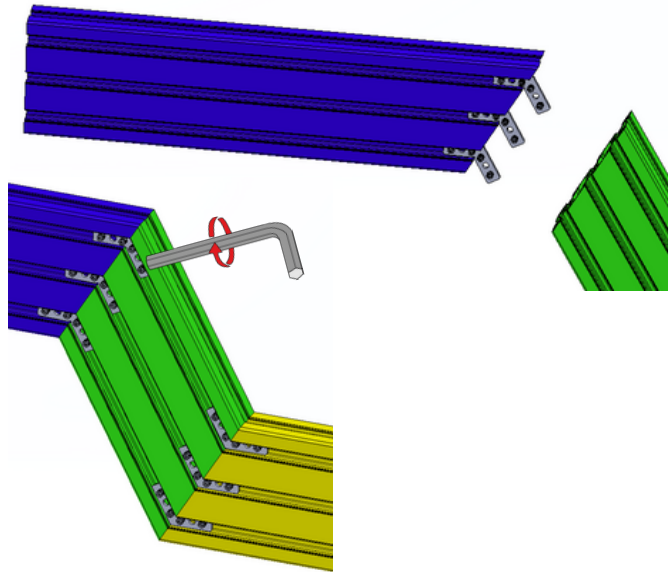


1



Install the T-slot nuts (M8) and the screws shown in the illustration into the flat corner connections, leaving approximately 6 mm of space between them.

6

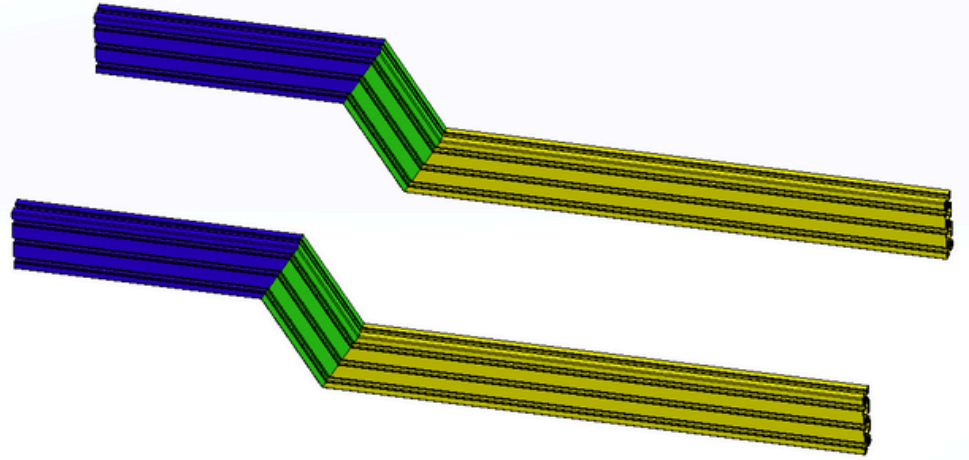


1

Join the profile indicated in blue with the profile indicated in green as shown in the illustration and tighten it using a hex key to secure it in place. (x2)

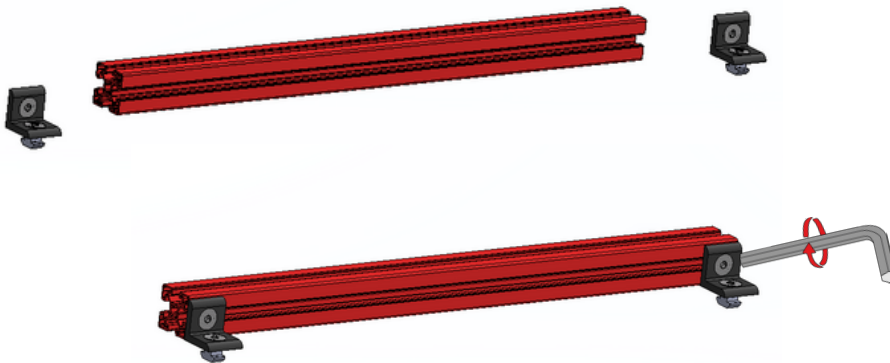
2

Align the prepared parts in a parallel position to each other.



3

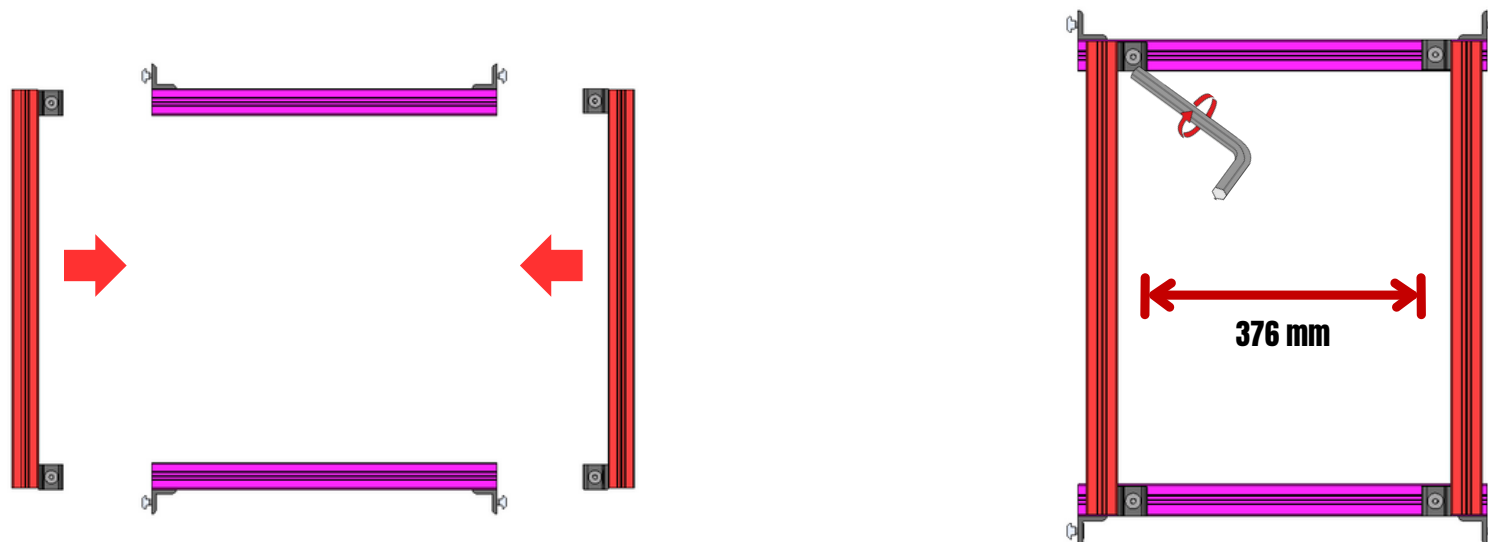
Attach the flat corner connection parts you prepared on page 5 to the profile indicated in red as shown in the illustration. (x2)



4

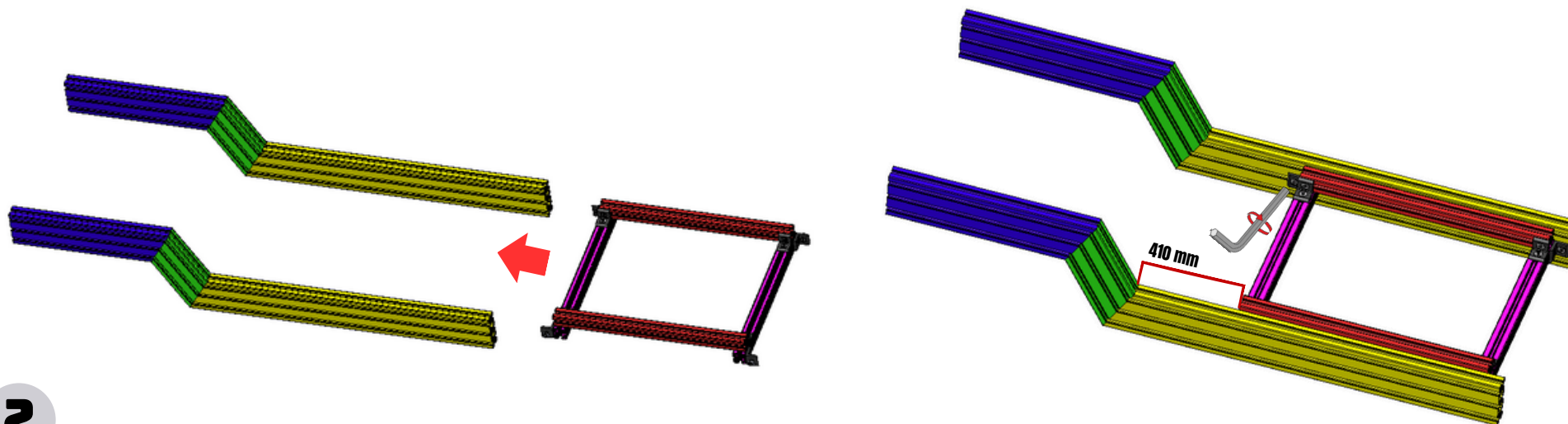
Attach the flat corner connection parts you prepared on page 5 to the profile indicated in pink as shown in the illustration. (x2)





1

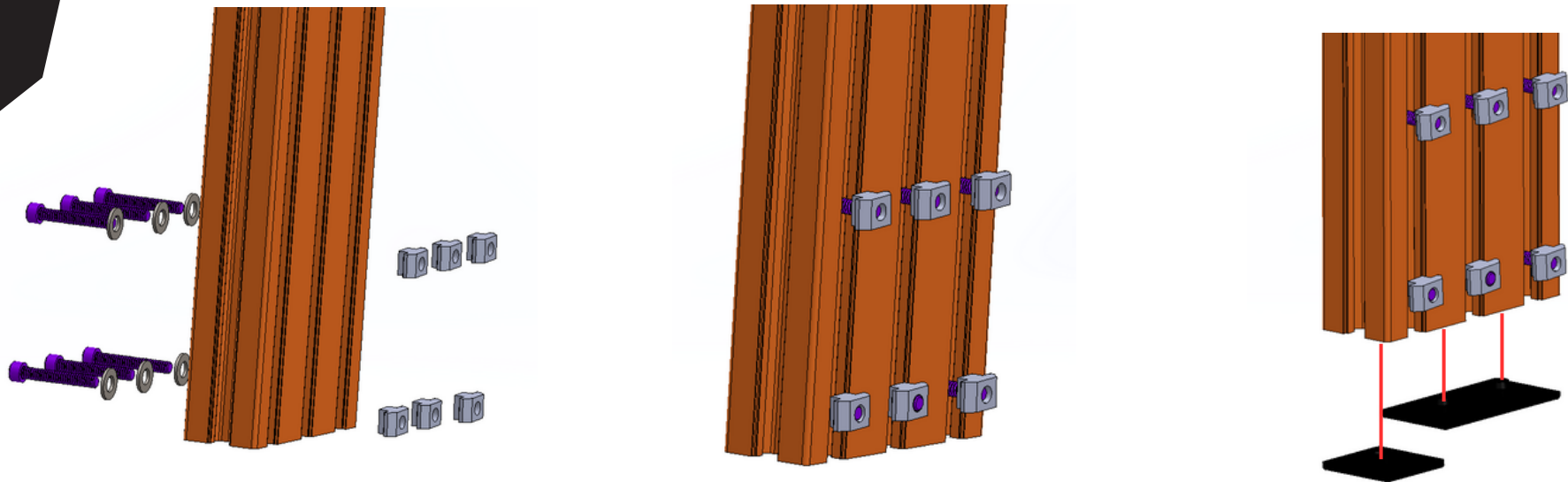
Connect the pink and red parts as shown in the illustration and tighten them using a hex key to secure them in place. (The gap distance should be 376 mm.)



2

Attach the prepared platform to the middle canals of the parts as shown in the illustration and tighten it using a hex key to secure it in place. (Recommended distance: 410 mm)

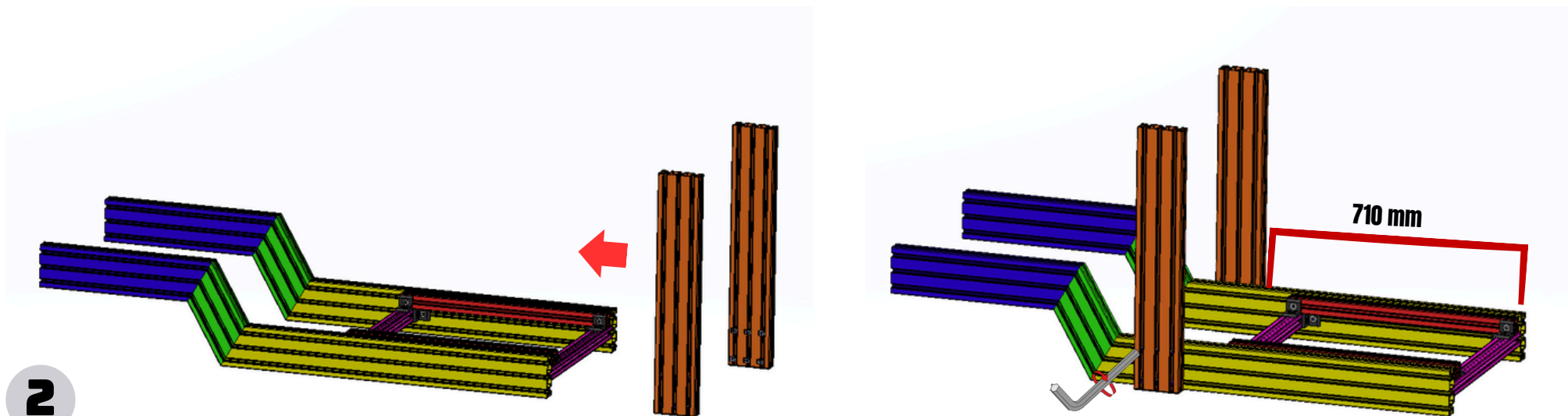
8



1

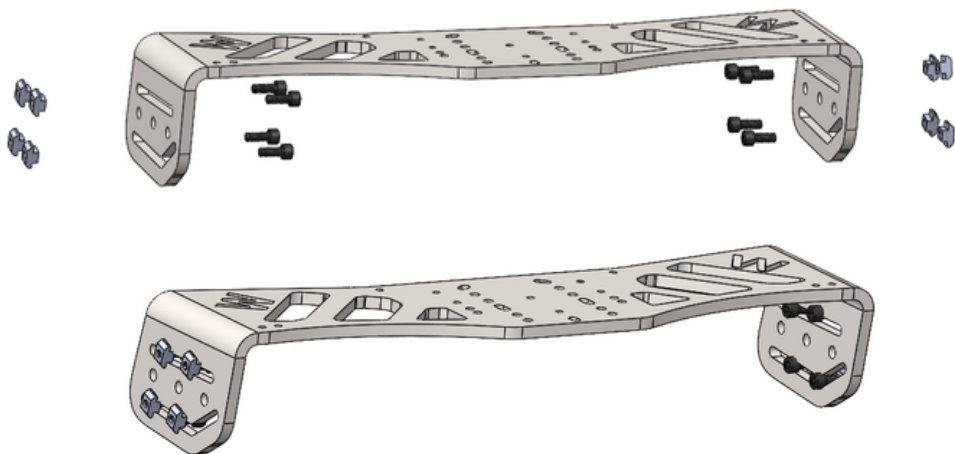
Attach the components (M6x40 socket head cap screw, M6 T-slot nut, M6 washer) to the profile indicated in orange as shown in the illustration. Then, attach the profile caps to the indicated places. (x2)

2



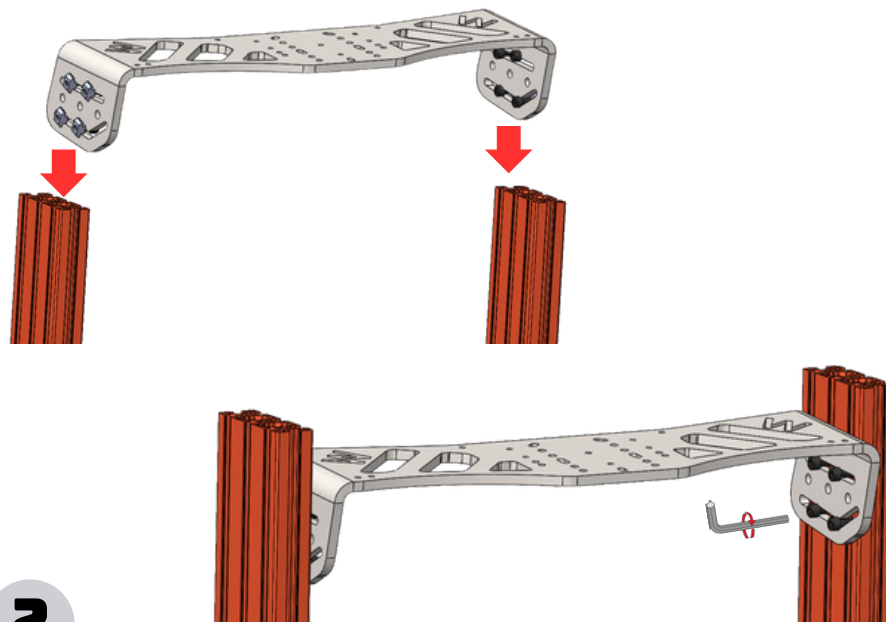
Attach the prepared profiles to the main chassis as shown in the illustration and tighten them using a hex key to secure them in place. (Recommended distance: 710 mm)

--- Universal Steering Plate ---



1

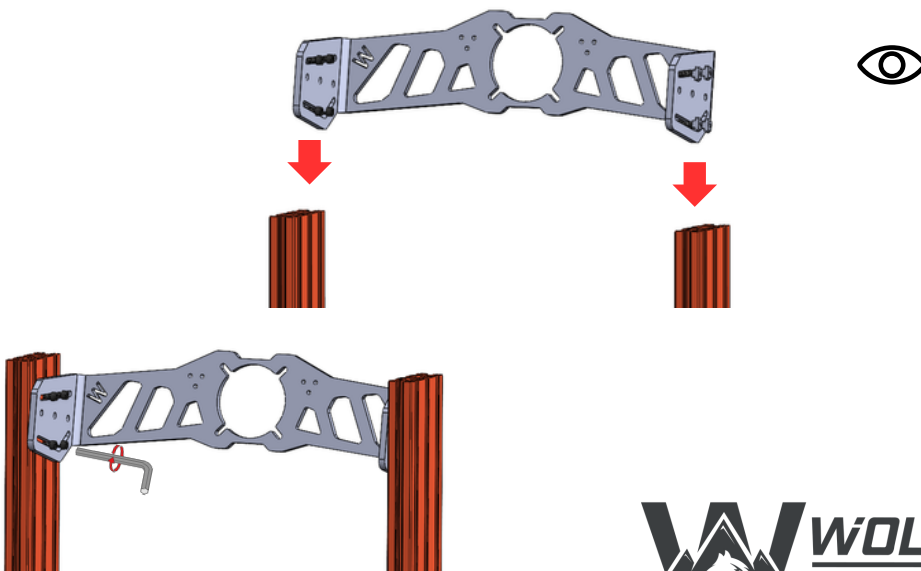
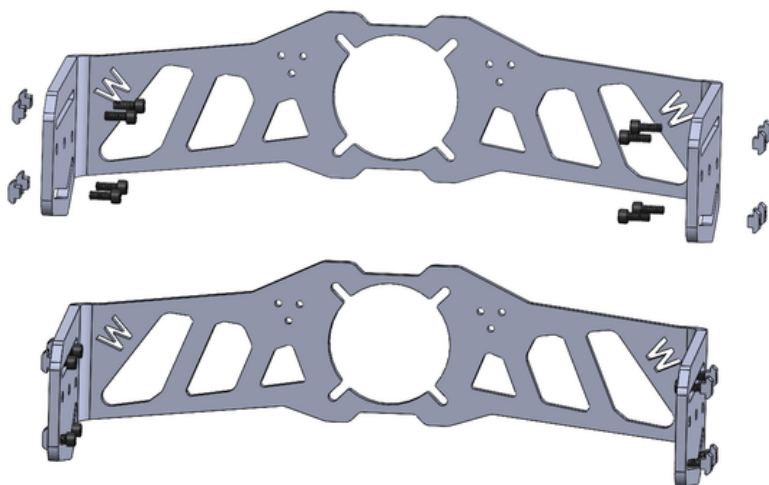
Assemble the screws and T-Slot nuts in the direction and quantity specified in the illustration.



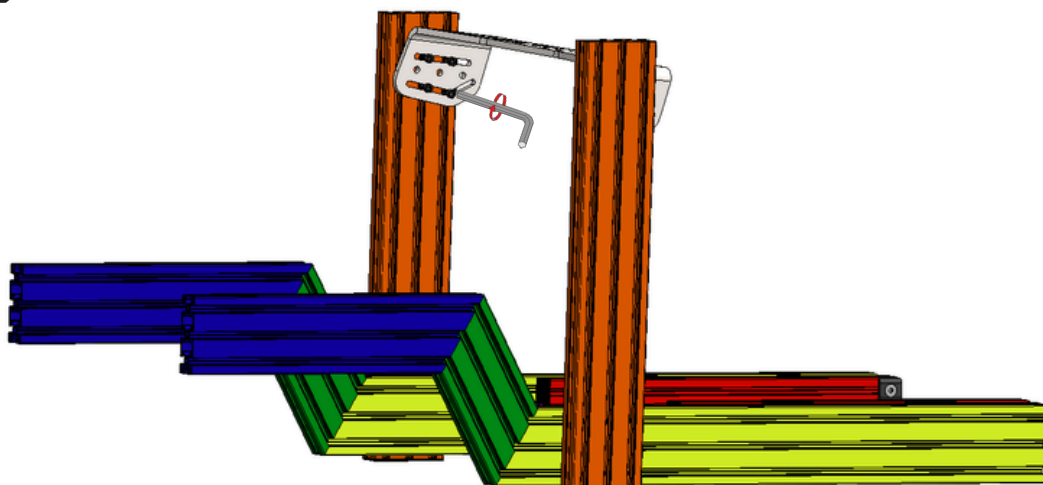
2

Install the T-Slot nuts on the steering plate so that they could fit to the canals of the profile indicated in orange.

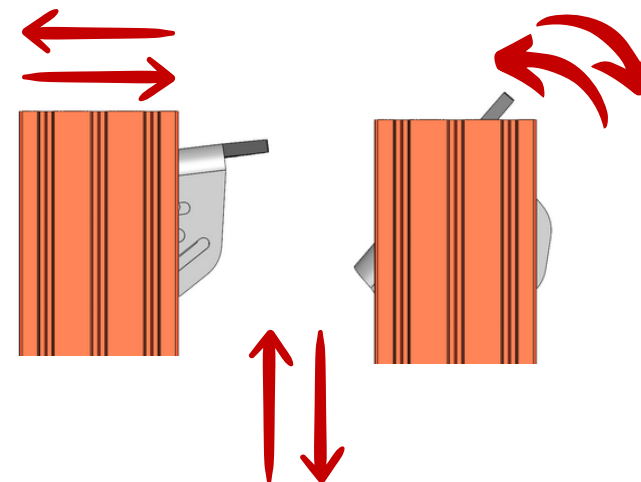
--- Simucube Steering Plate (10 mm) ---



--- Universal Steering Plate ---

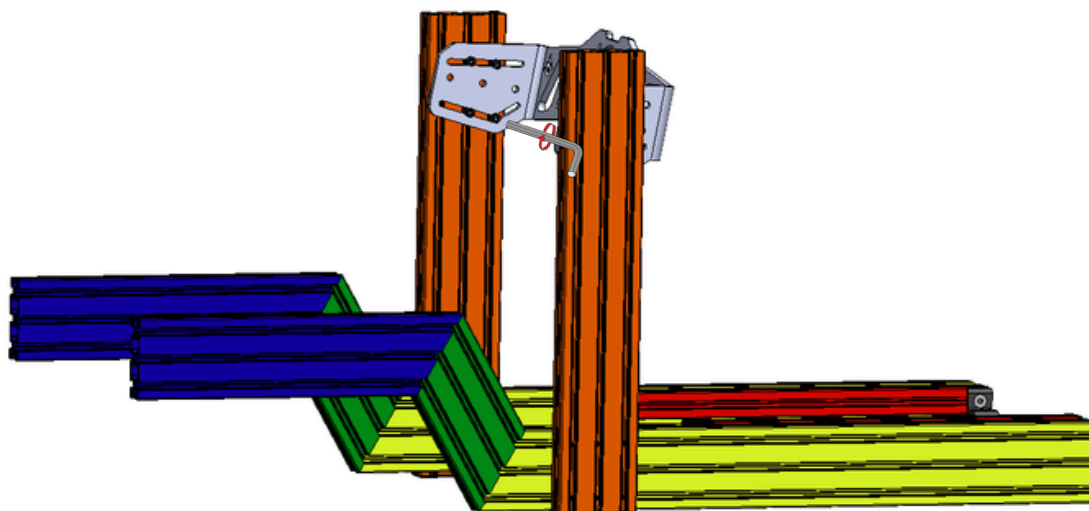


1

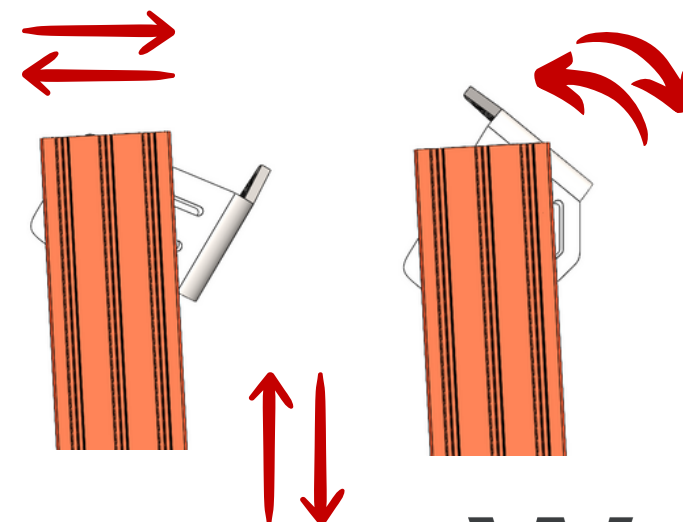


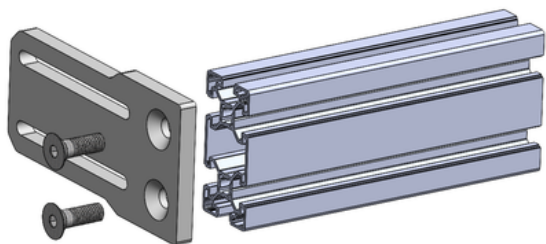
2

-- Simucube Steering Plate (10 mm) ---



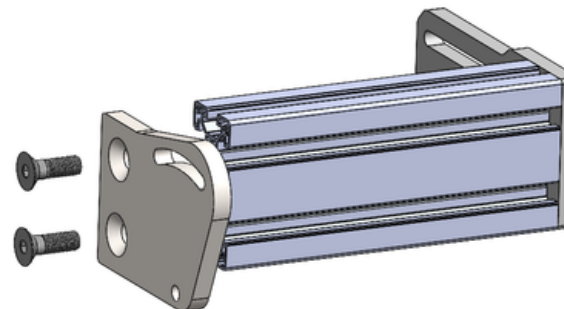
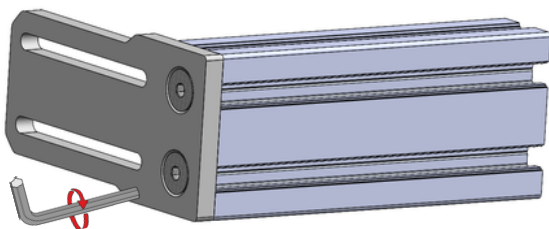
After bringing the steering plate to the desired angle and height, fix it by tightening it with the help of a hex key.





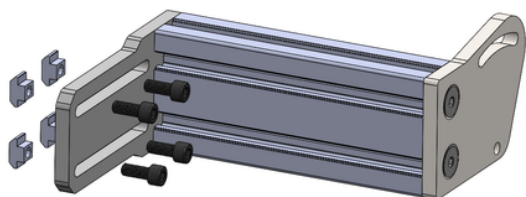
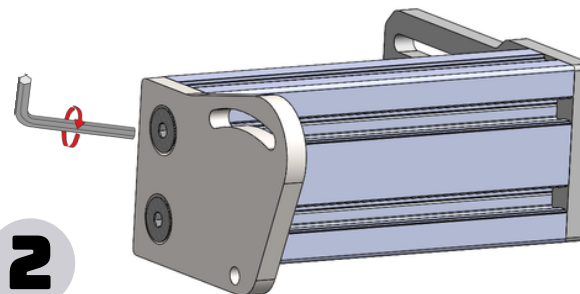
Combine the parts in the figure using M10x30 mm countersunk screws as shown. (Apply the same process for both profile pieces.)

1



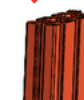
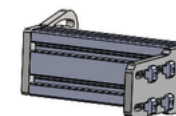
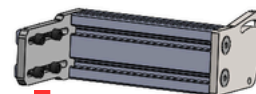
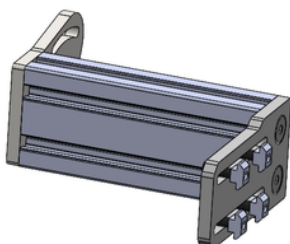
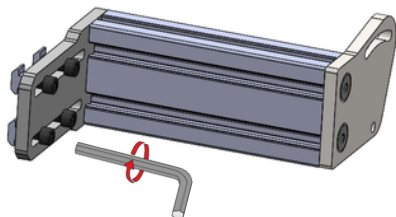
Combine the parts in the figure using M10x30 mm countersunk screws as shown. (Apply the same process for both profile pieces.)

2



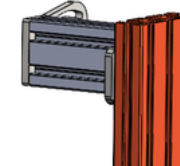
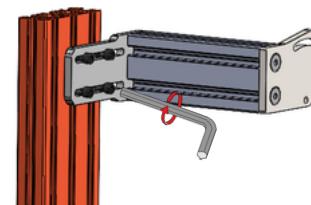
Attach the components shown on the left (T-slot nut and M8x20 socket head cap screws) to the prepared part as shown in the figure. (Apply the same process for both profile pieces.)

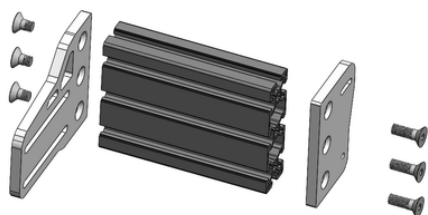
3



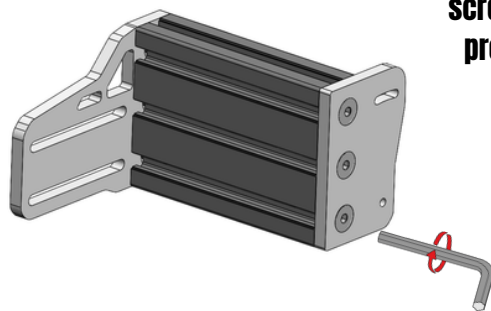
Attach the steering system you prepared to the main body. After adjusting the pieces to the desired height align profiles to each other and Secure it by tightening it with the help of a hex key.

4

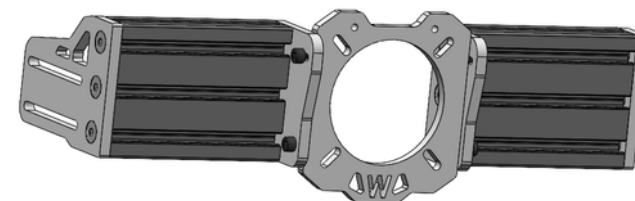
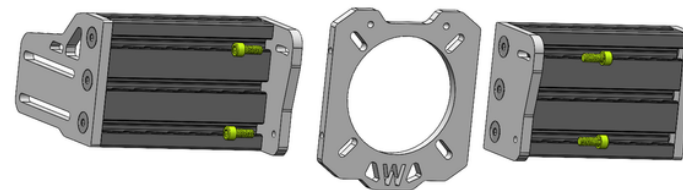




Assemble the parts in the figure using M10x30 mm countersunk screws as shown. (Apply the same process for both profile pieces.)

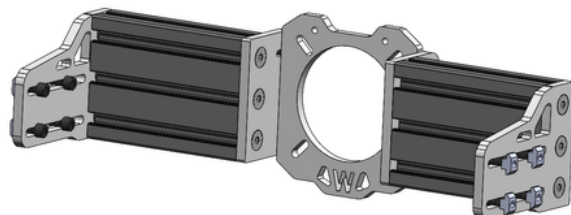
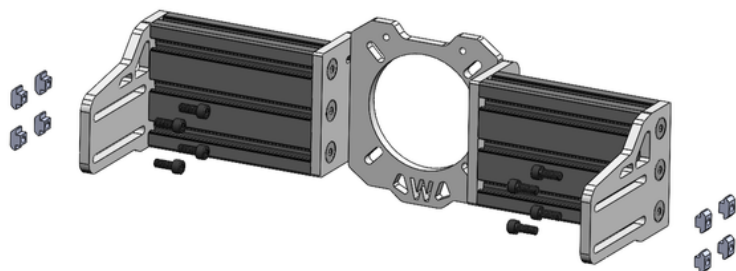


1



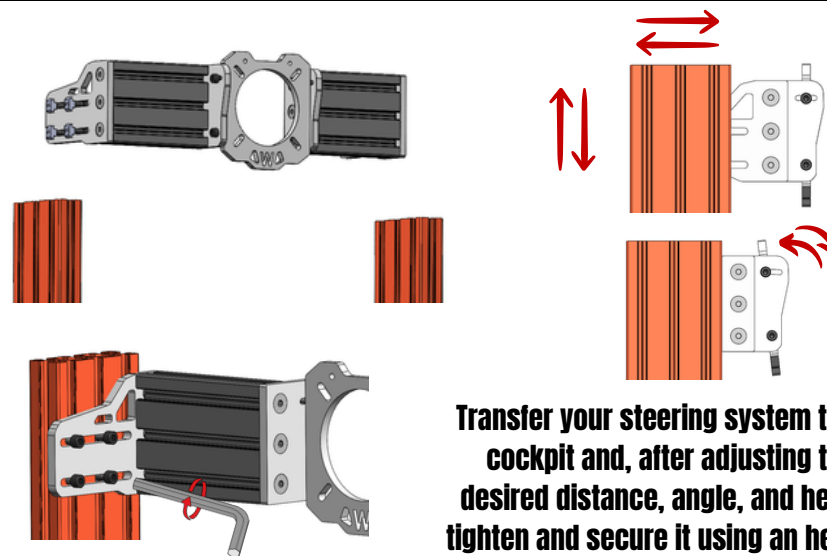
Connect the prepared profiles using the base mounting part and the hex screws shown in the figure.

2



3

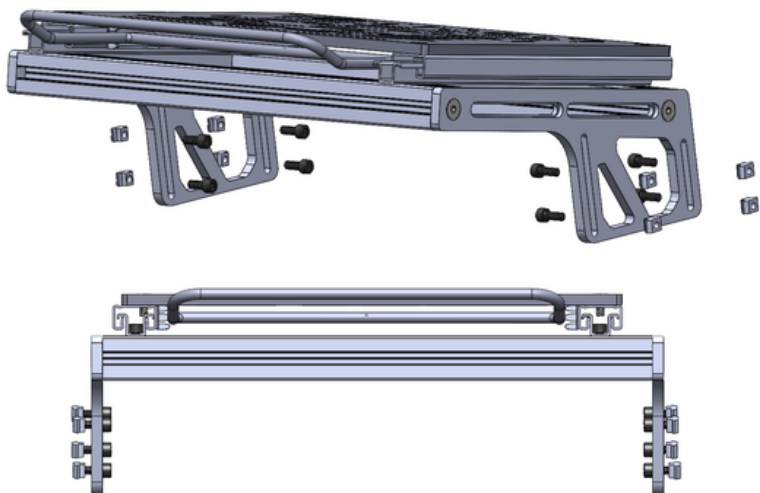
Attach the socket head cap screws and T-slot nuts to the indicated locations on the prepared steering system.



Transfer your steering system to the cockpit and, after adjusting the desired distance, angle, and height, tighten and secure it using an hex key

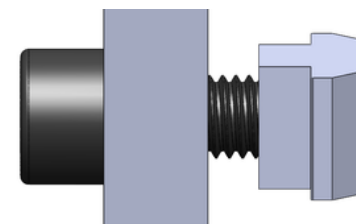
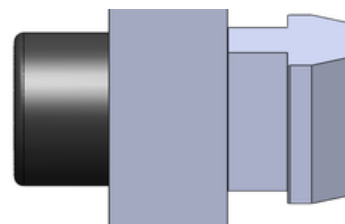
4

--- Mount For Sliding Pedal System ---



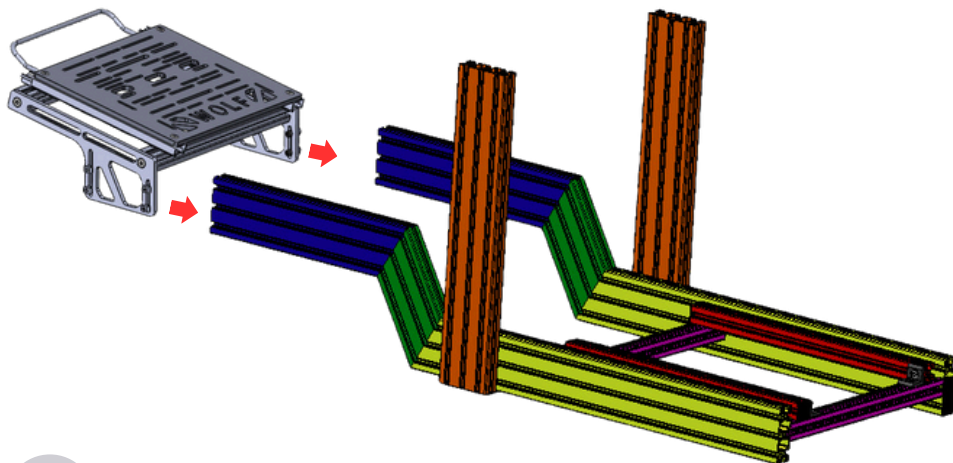
1

Assemble the screws and T-Slot nuts in the direction and quantity specified in the illustration.



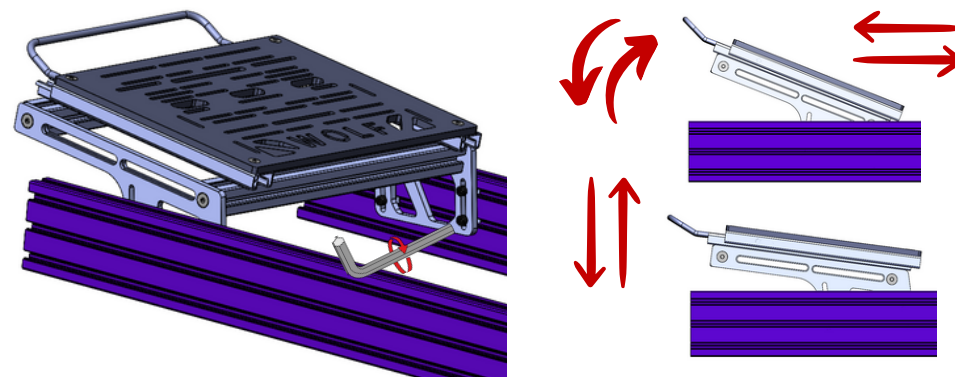
2

Install all screws leaving approximately 1 cm of space between surface.



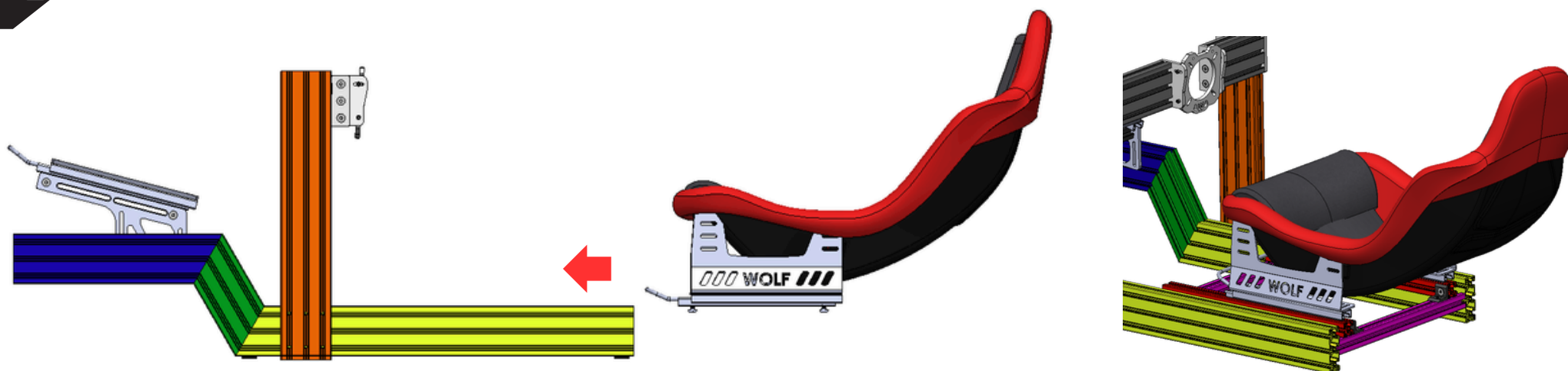
3

Place the pedal system with the mounted connection parts in the canals of the profiles, as indicated by the yellow T-slot nuts.



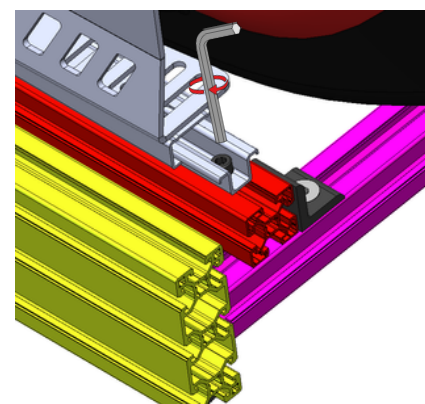
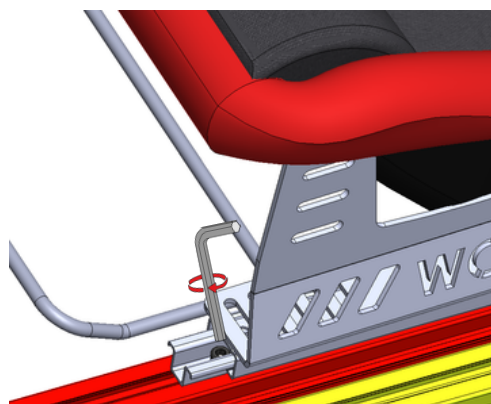
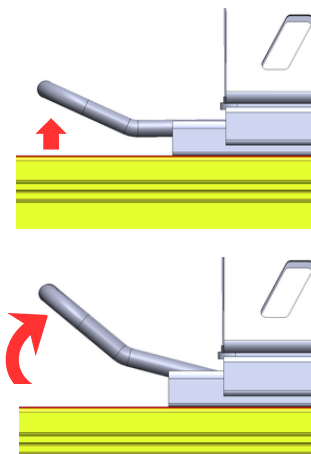
4

You can adjust the pedal systems distance and angle as you want. After making the appropriate adjustment, tightening the screws with the help of an hex key.



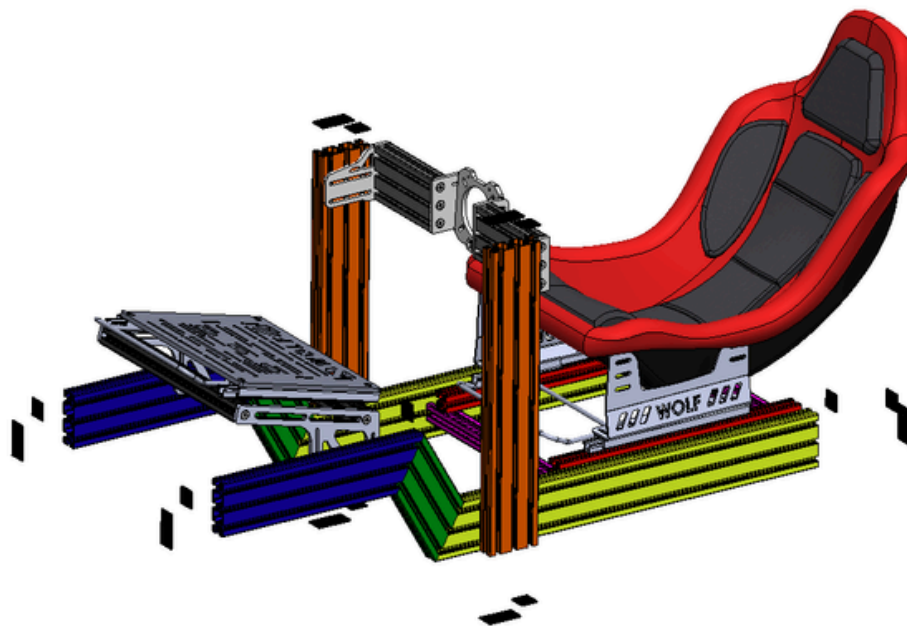
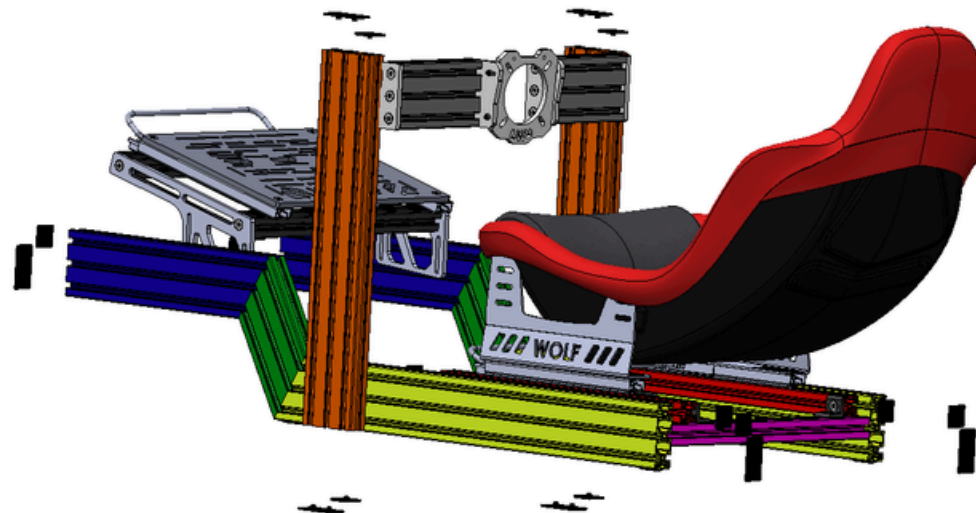
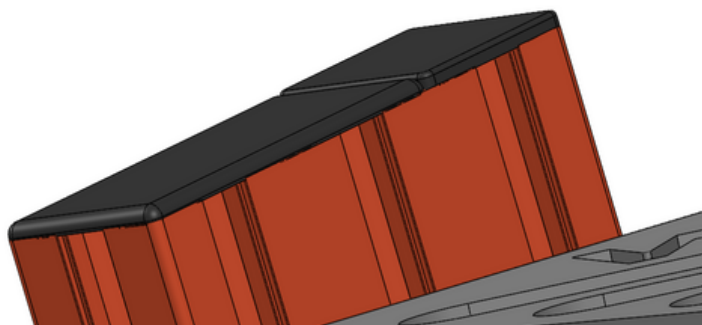
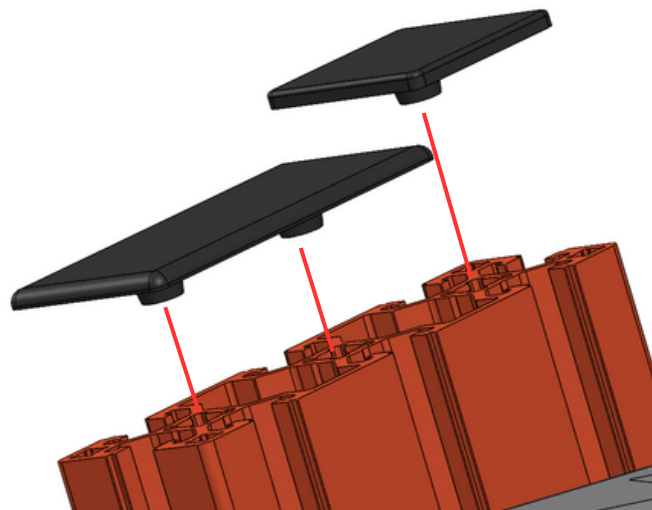
1

Transfer your seat to the cockpit using the T-slot nuts on the rail system, and insert the T-slot nuts into the canals of the profile indicated in red.

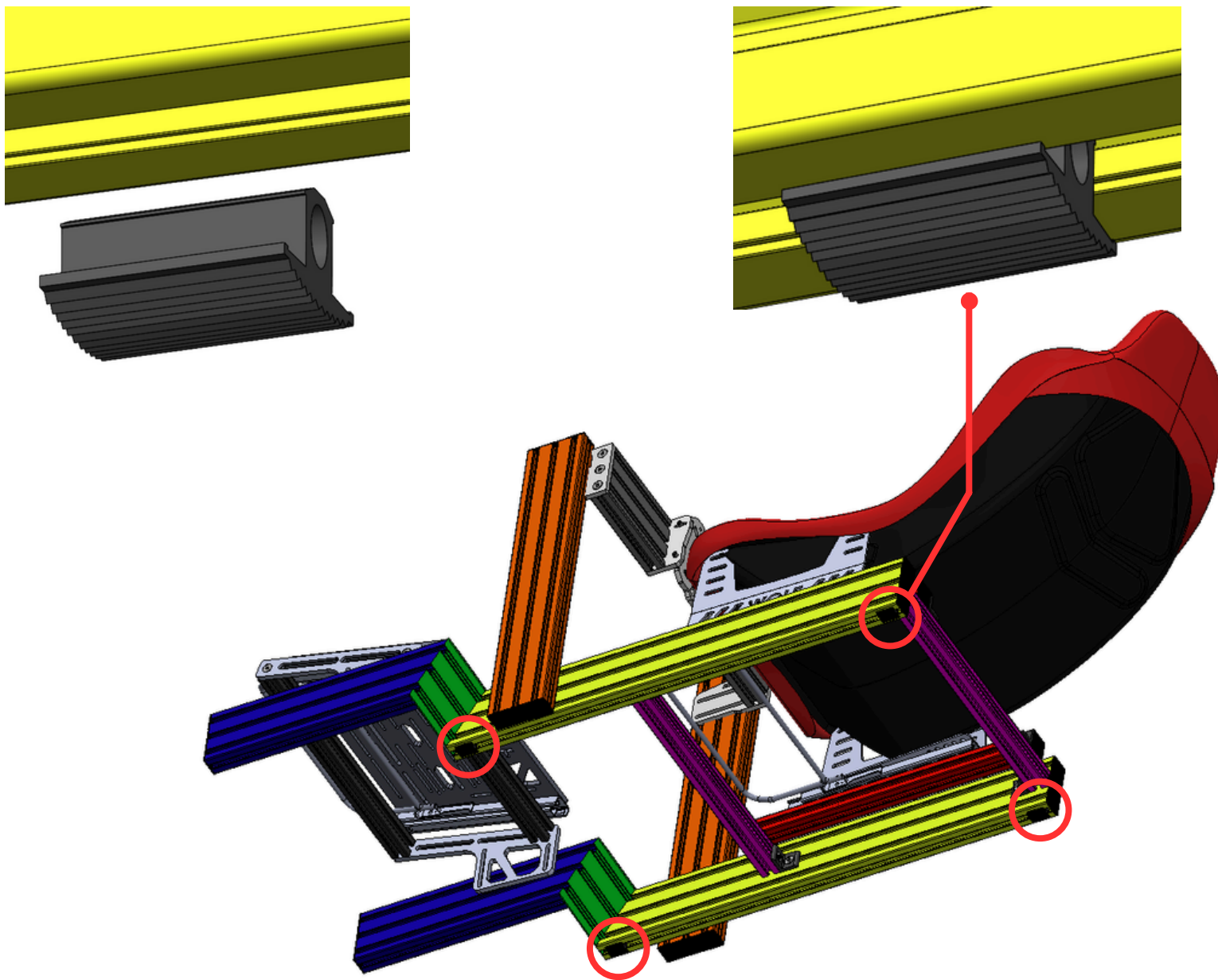


2

To easily tighten the screws connected to the T-slot nuts, pull the rail up to retract the system. After tightening the screws at the front, pull the rail up again to move the system forward and tighten the screws at the back to secure your seat.



Mount the end caps as shown.



Place the cover profiles as shown.

