

MONITOR STAND TRIPLE **ASSEMBLY GUIDE**





Visit our website for more information
www.wolfracing.eu

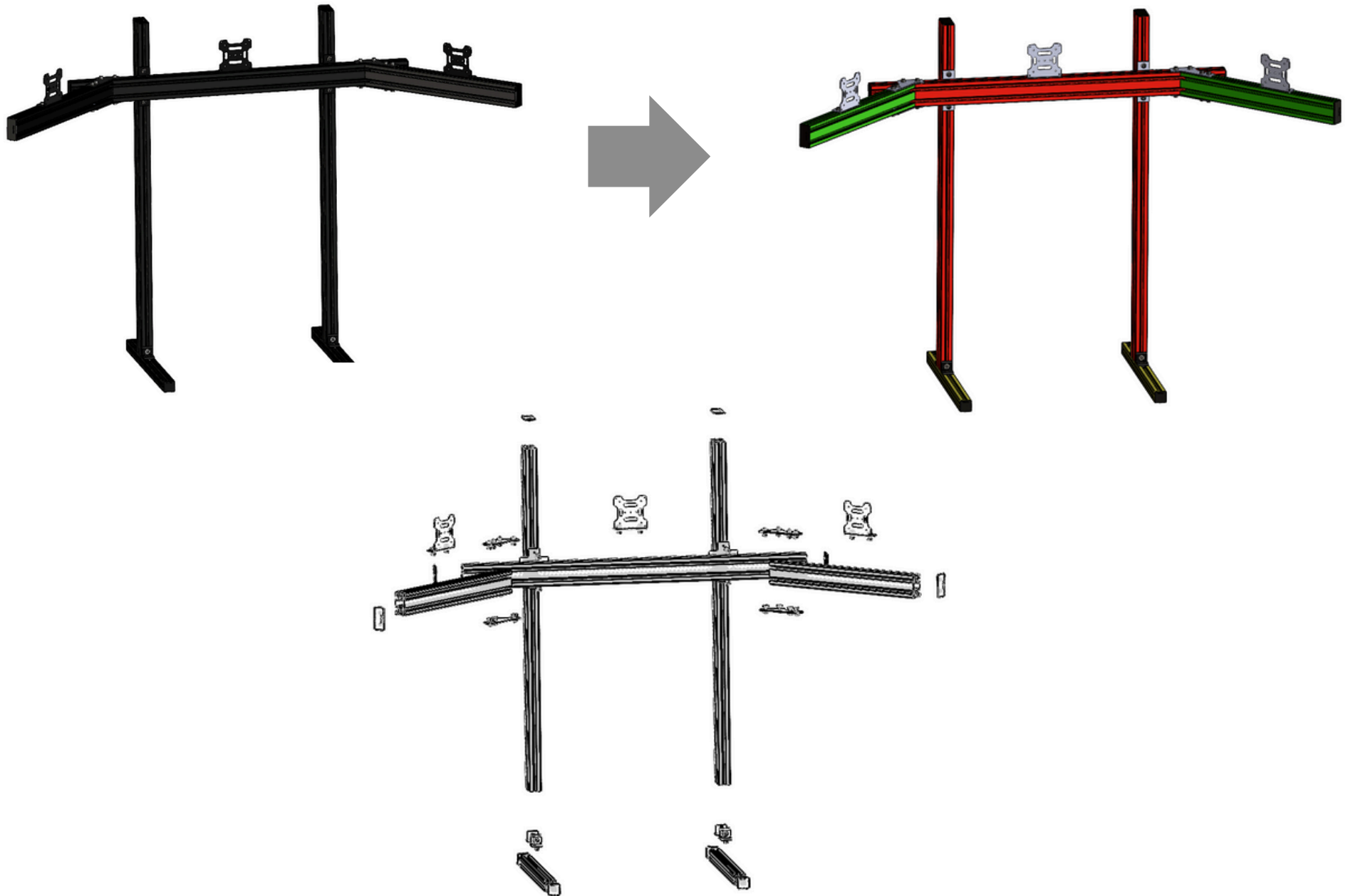


WEBSITE

--- Attention During Installation ---

- 
- It is recommended that the installation be performed by at least two people.
 - Aluminum shavings may have adhered to the protective film on the profiles; therefore, it is advised to perform the installation on an easily cleanable surface.
 - Following the indicated sequence during installation is essential.
- 

2



The components of the monitor stand are indicated in different colors for assembly.

--- MONITOR STAND COMPONENTS ---



40-120-1160 (x3)

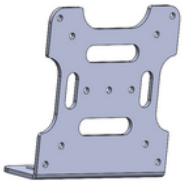


80-120-600 "Angled" (x2)

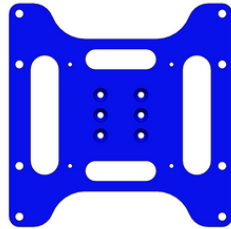


40-40-580 (x2)

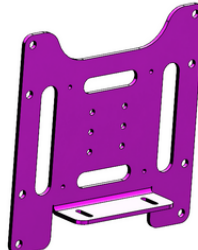
Vesa set (x1)



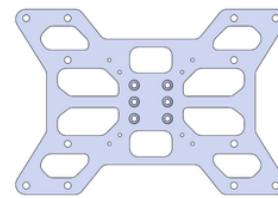
Vesa 100*100 Bent



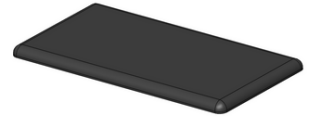
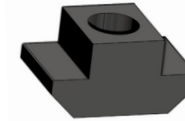
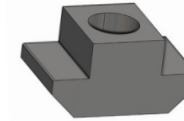
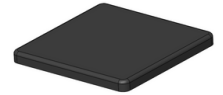
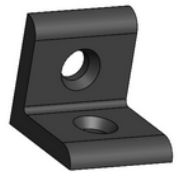
Vesa 200*200 Flat



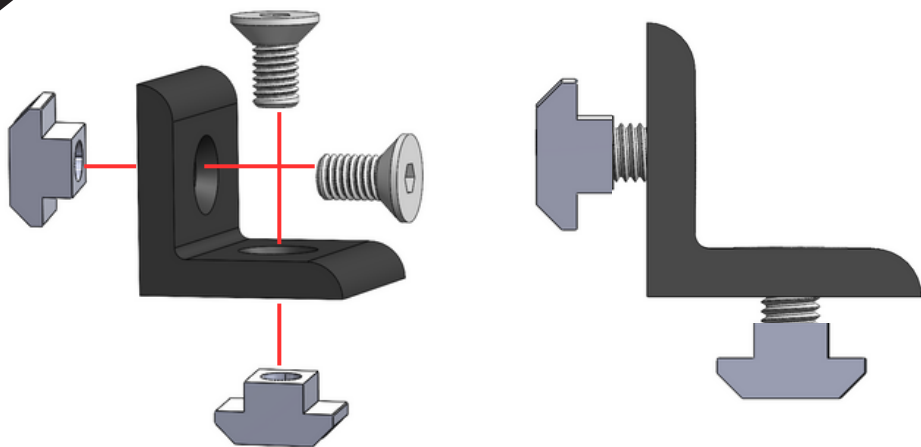
Vesa 200*200 Bent



Vesa 300*200 Flat

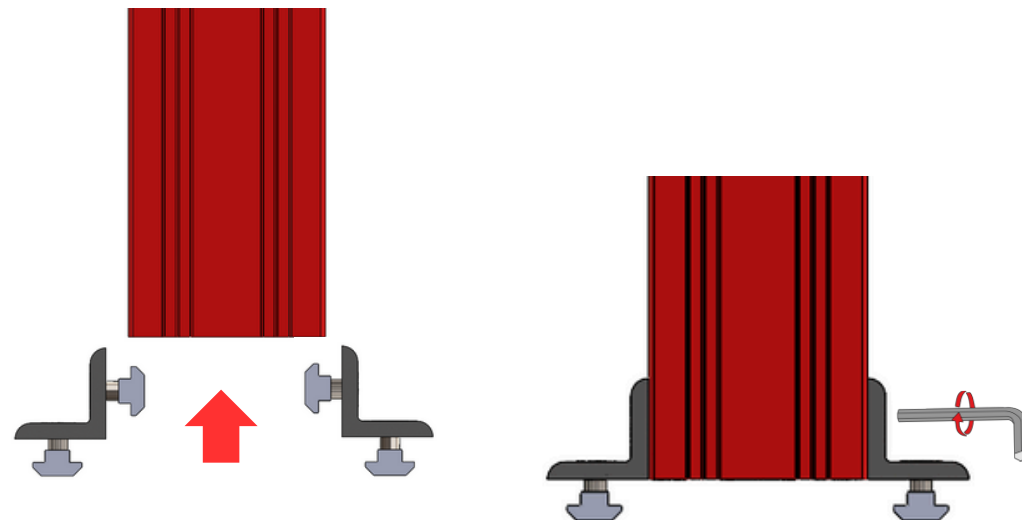
Mounting plate
(x2)Angled profile mounting plate
(x4)M8x16 Countersunk Screw
(x8)40x80 End Cap
(x6)M8 T-Slot Nut
(x8)M6 T-Slot Nut
(x34)40x40 End Cap
(x4)M8x16 Socket
Head Cap Screw
(x8)M6x16 Socket
Head Cap Screw
(x34)40x40 Angle Bracket
(x4)Cover Profile
(x4)

4



1

Install the T-slot nuts and the screws shown in the figure between the flat corner connectors, leaving approximately 6 mm of space between them.



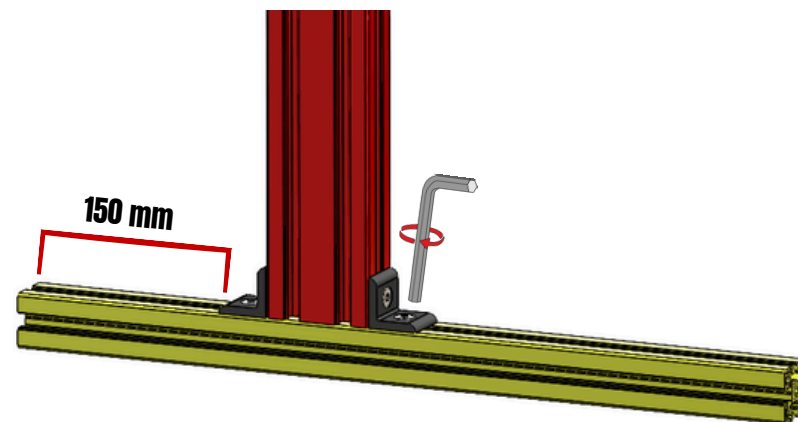
2

Attach the angle brackets you have prepared to the profile indicated in orange and tighten them with a hex key. (X2)

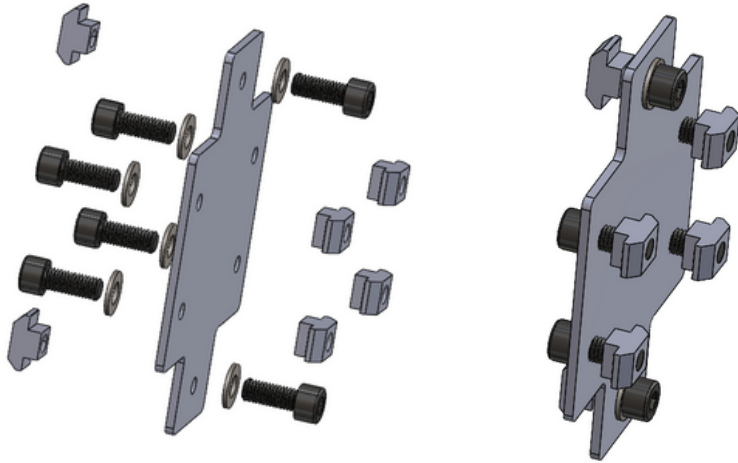


3

Insert the T-slot nuts on the profile indicated in orange into the canals of the 40-40 profile indicated in yellow as shown in the figure, adjust to your desired setting (**recommended measurement is 150 mm**), and tighten with a hex key. (x2)

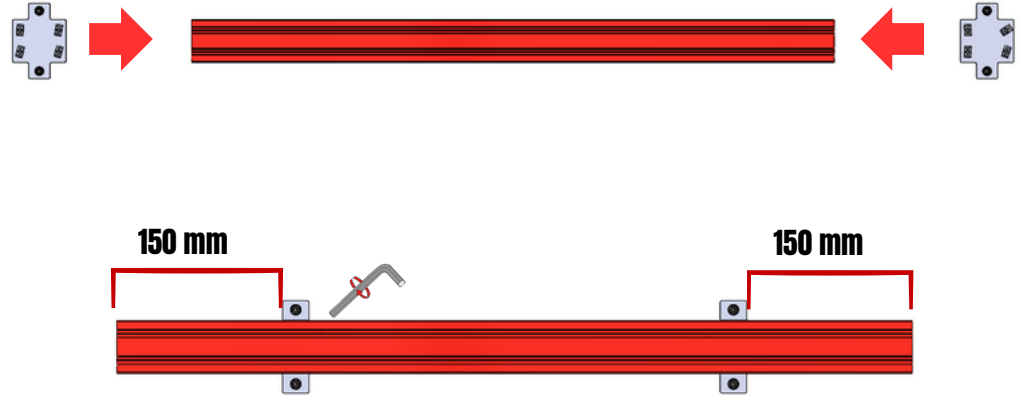


5



1

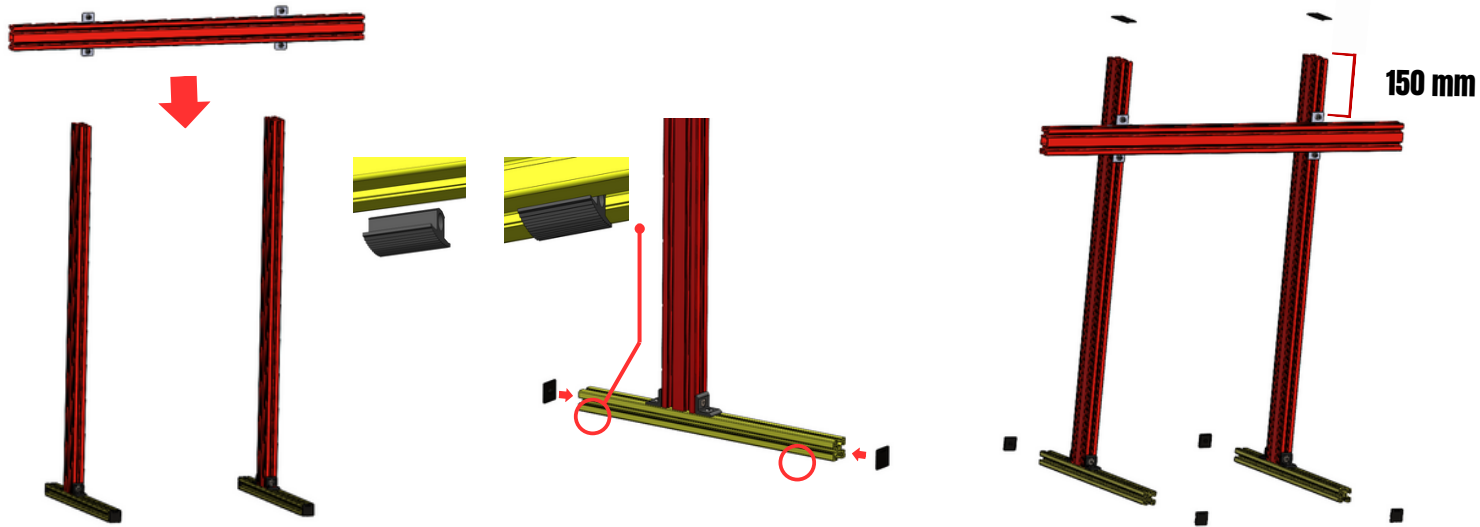
Attach the washer screw and T-slot nuts to the profile mounting plate as shown in the figure. (x2)



2

Attach the mounting plate you have prepared to the canals of the profile indicated in red as shown in the figure, and secure it by tightening with a hex key. (Recommended measurement is 150 mm)

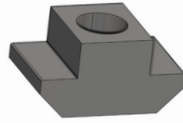
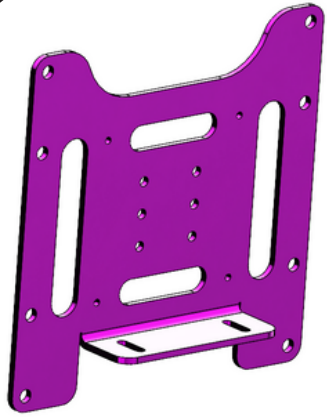
3



Insert the profile you have prepared into the canals of the stand legs as shown in the figure (recommended measurement is 150 mm). Then, secure it by tightening with a hex key and attach the end caps and cover profiles as shown.

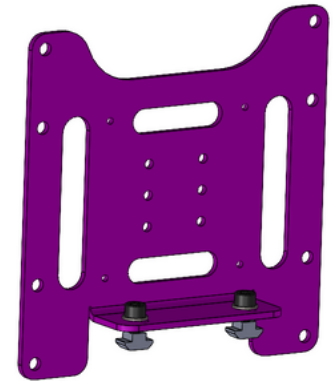
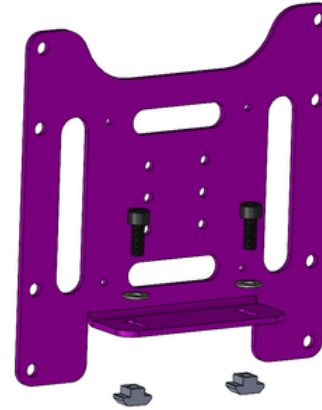
6

--- 200x200 Bent Vesa Mounting ---



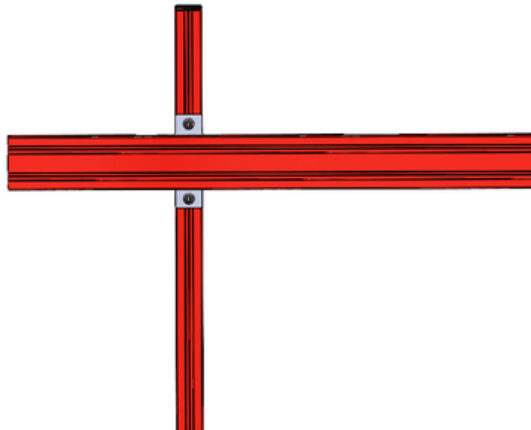
1

The Vesa components in the package are as shown in the figure.

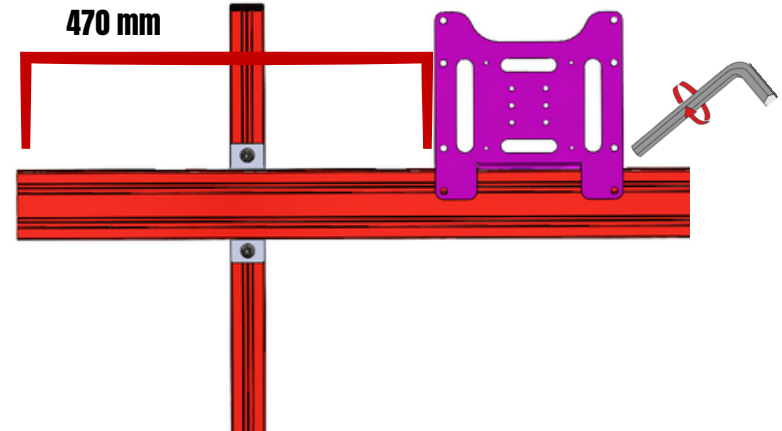


2

Assemble the components as shown in the figure.



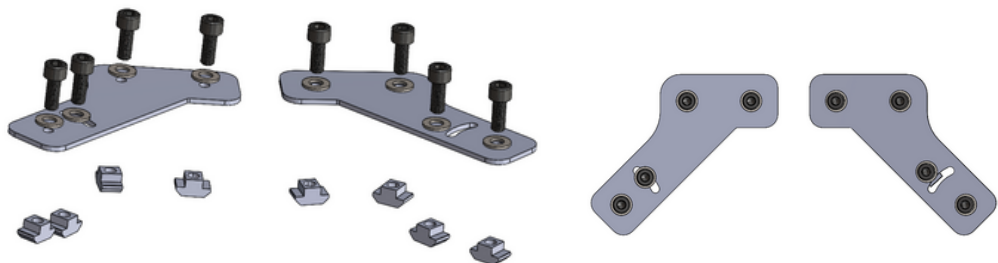
470 mm



3

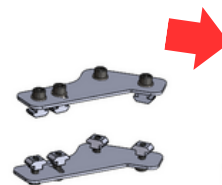
Insert the Vesa you have prepared into the canals of the screen stand as shown, and center it (recommended measurement between the Vesa and the intermediate profile is 470 mm). Then, secure the Vesa by tightening with a hex key.

7



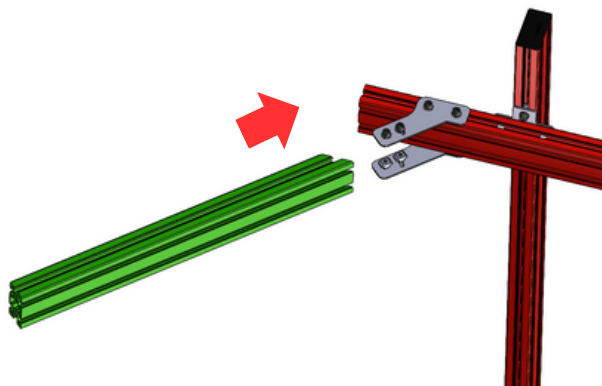
1

Attach the washer screw and T-slot nuts to the angled profile mounting plates in two different directions as shown in the figure. (x2)



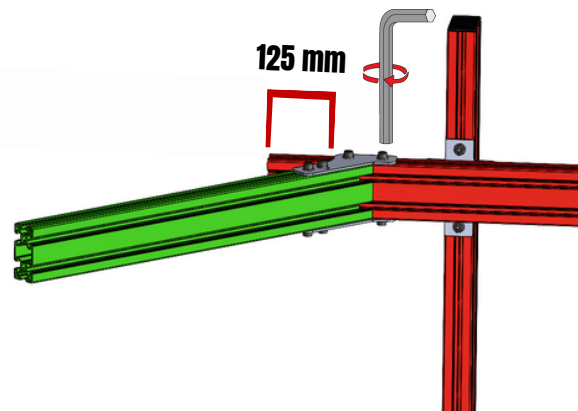
2

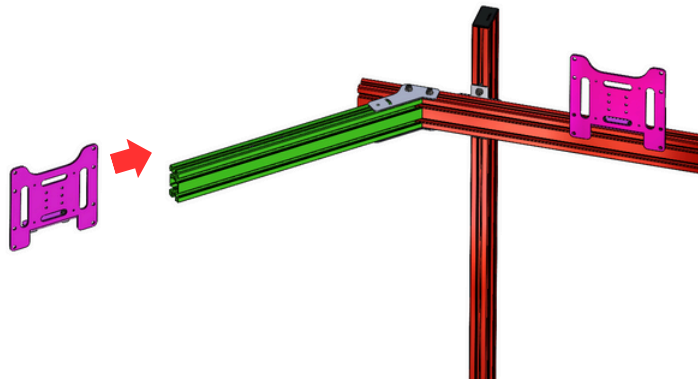
Insert the plates you have prepared into the profile as shown in the figure, but **do not secure them**. (x2)



3

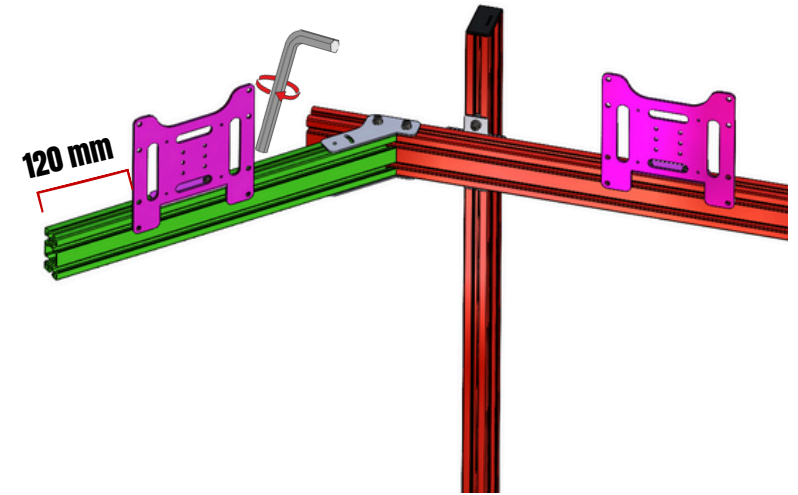
Attach the angled profile indicated in green to the T-slot nuts on the plates you prepared in step 2. Then, align the plates, adjust to your desired distance, and secure by tightening with a hex key. (**Recommended measurement is 125 mm**).



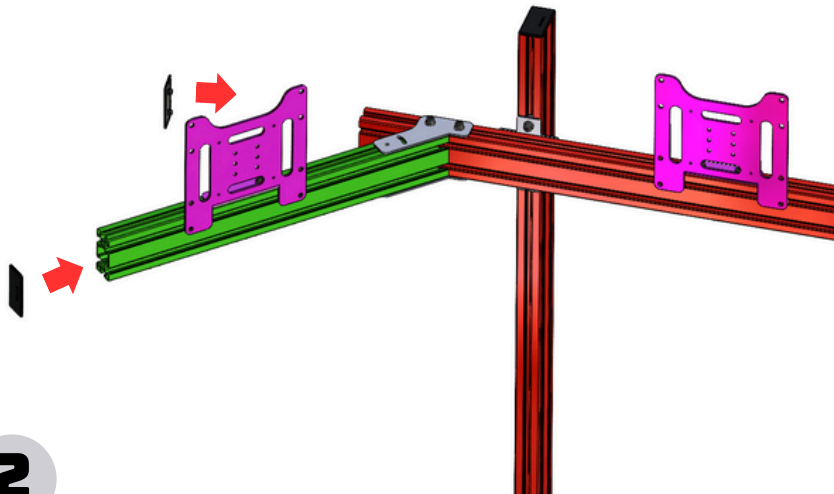


1

Attach the Vesa you have prepared to the angled profile indicated in green, which you have connected to the main body. (x2)

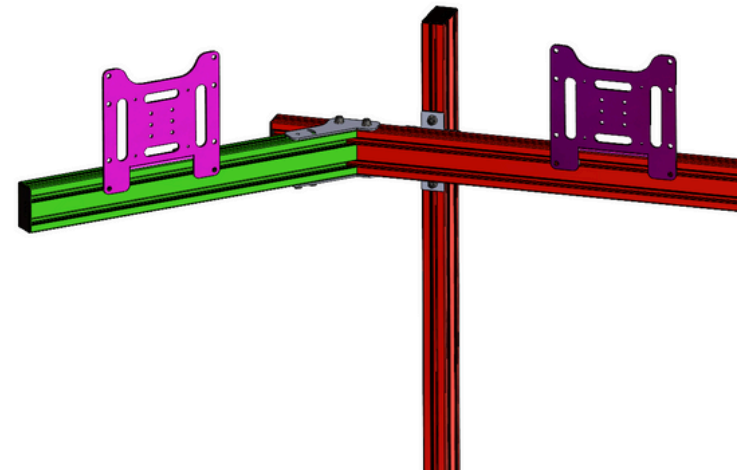


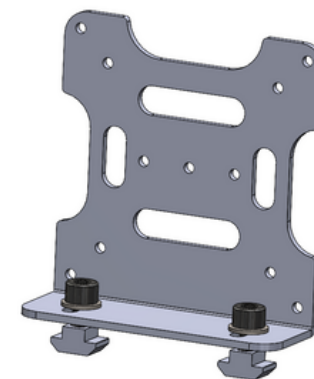
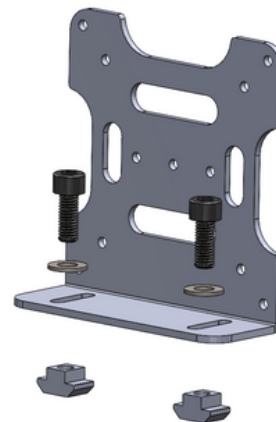
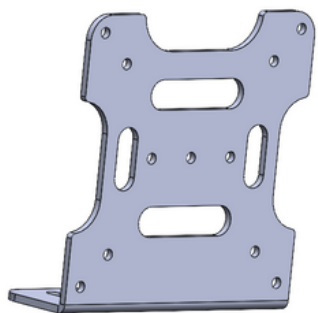
After adjusting the Vesa to your desired distance, secure it by tightening with a hex key. (x2) (**Recommended measurement is 120 mm**).



2

Finally, attach the 40x80 end caps to the indicated locations as shown in the figure. (x2)

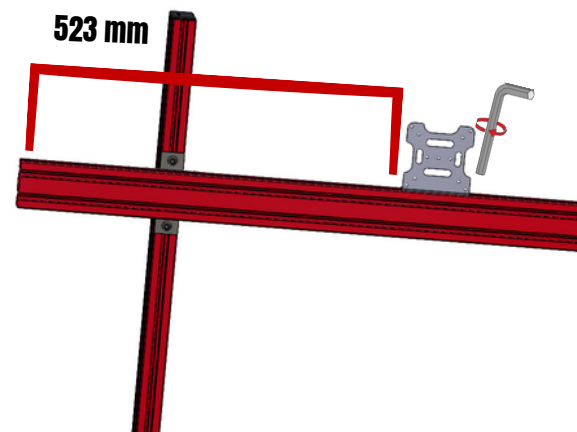
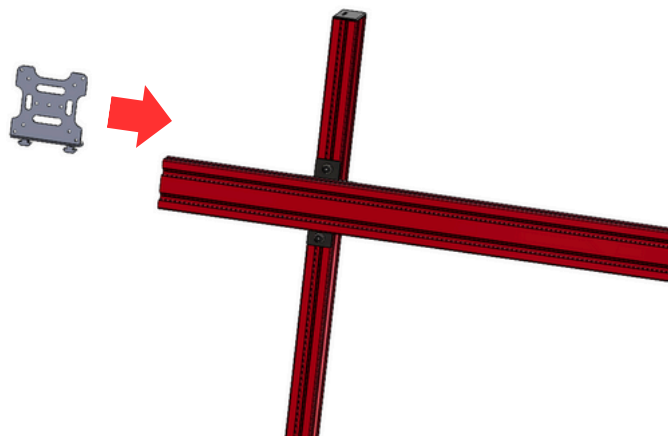


**1**

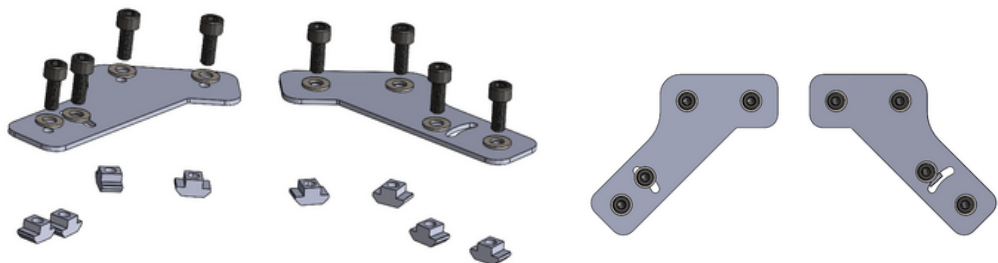
The Vesa components in the package are as shown in the figure.

2

Assemble the components as shown in the figure.

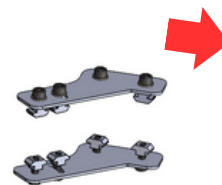
3

Insert the Vesa you have prepared into the canals of the screen stand as shown, and center it (**recommended measurement between the Vesa and the intermediate profile is 523 mm**). Then, secure the Vesa by tightening with a hex key.



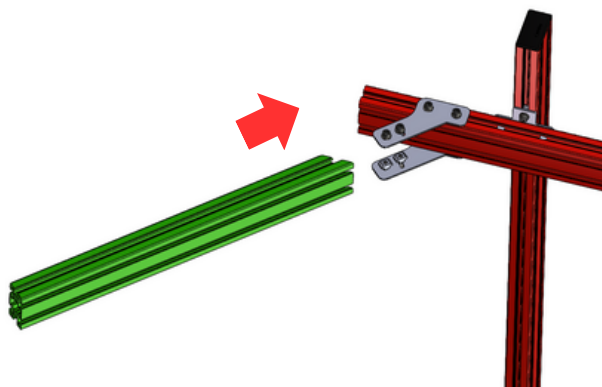
1

Attach the washer screw and T-slot nuts to the angled profile mounting plates in two different directions as shown in the figure. (x2)



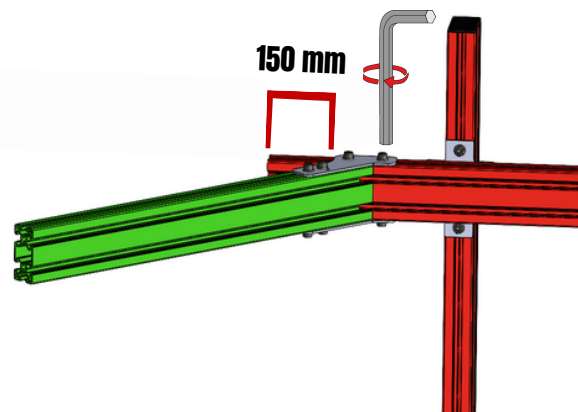
2

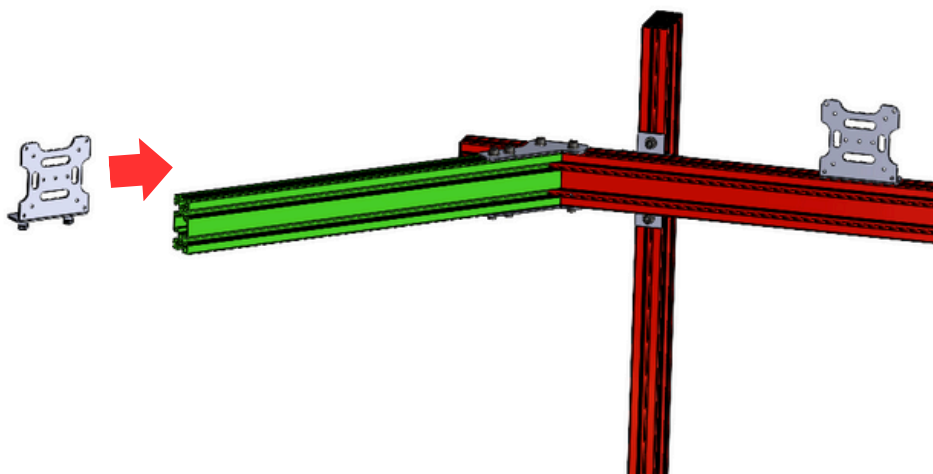
Insert the plates you have prepared into the profile as shown in the figure, but **do not secure them**. (x2)



3

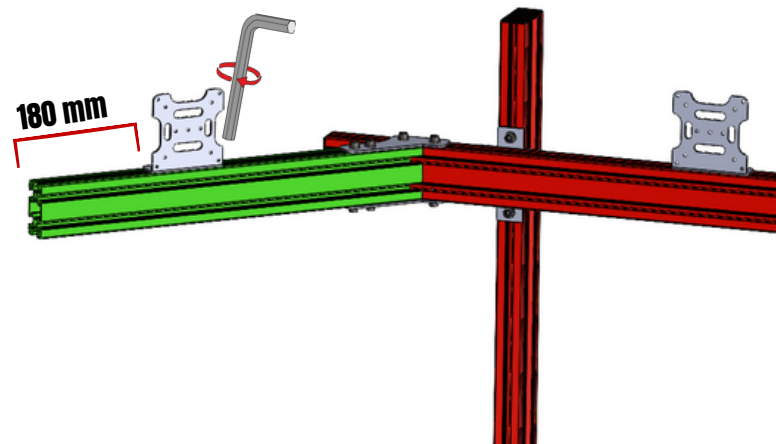
Attach the angled profile indicated in green to the T-slot nuts on the plates you prepared in step 2. Then, align the plates, adjust to your desired distance, and secure by tightening with a hex key. (**Recommended measurement is 125 mm**).



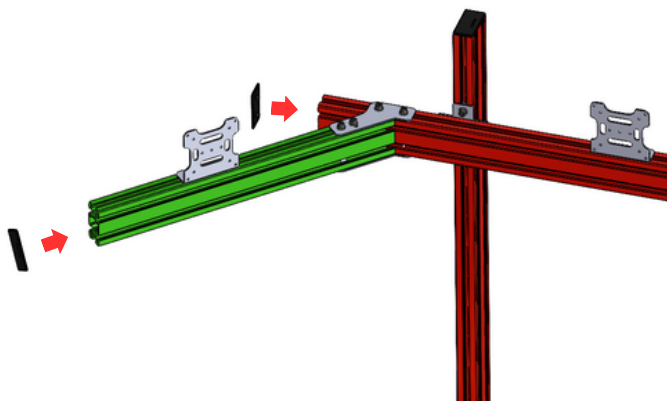


1

Attach the Vesa you have prepared to the angled profile indicated in green, which you have connected to the main body. (x2)

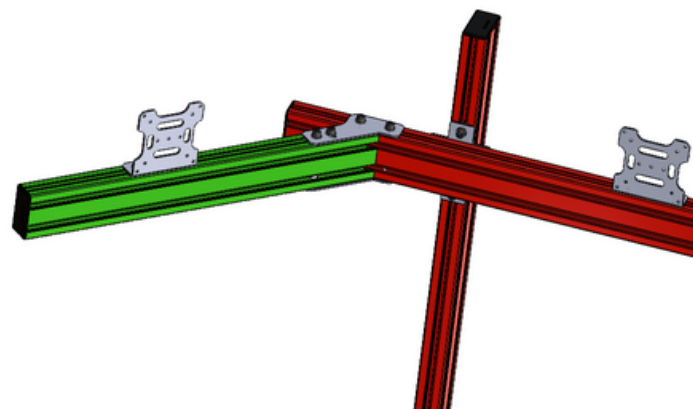


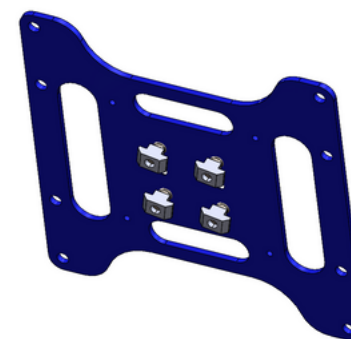
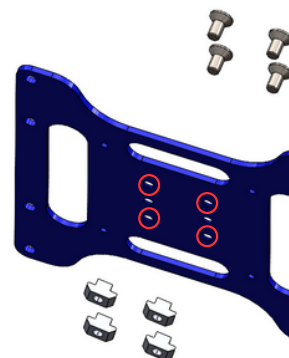
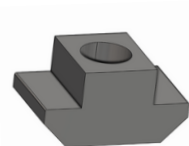
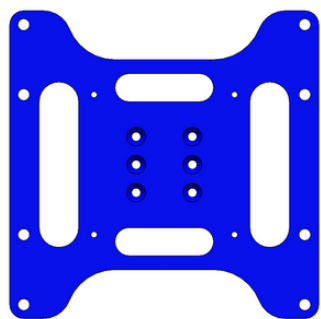
After adjusting the Vesa to your desired distance, secure it by tightening with a hex key. (x2) (Recommended measurement is 180 mm).



2

Finally, attach the 40x80 end caps to the indicated locations as shown in the figure. (x2)



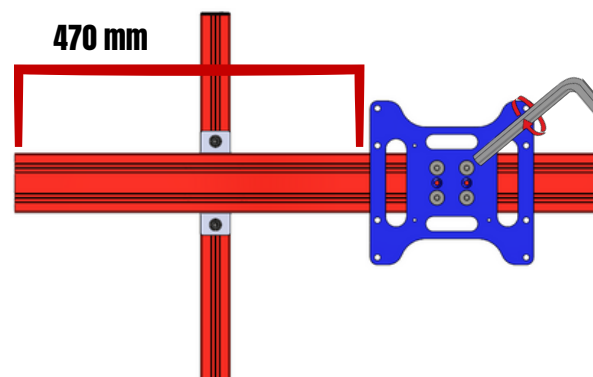
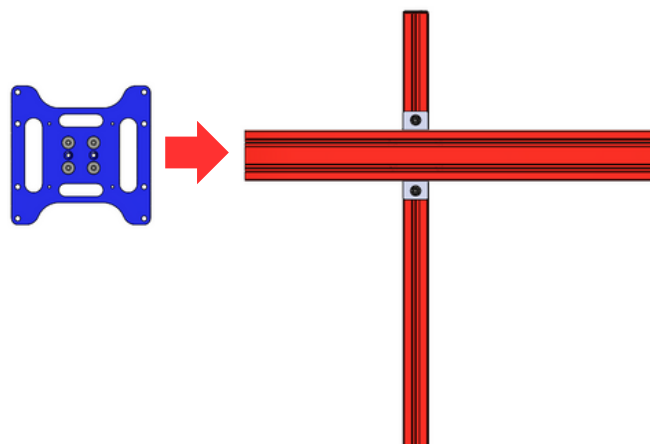


1

The Vesa components in the package are as shown in the figure.

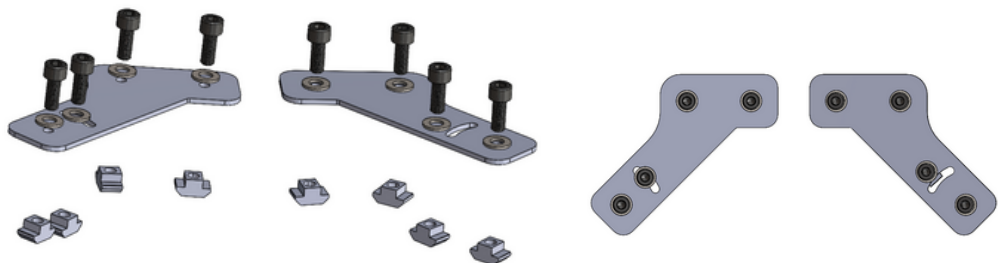
2

Assemble the components as shown in the figure.



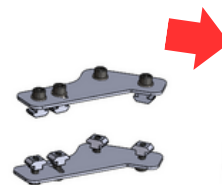
3

Insert the Vesa you have prepared into the canals of the screen stand as shown, and center it (the distance between the Vesa and the profile is 470 mm). Then, secure the Vesa by tightening with a hex key.



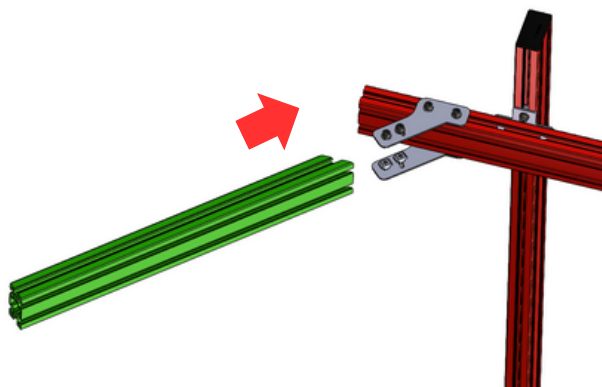
1

Attach the washer screw and T-slot nuts to the angled profile mounting plates in two different directions as shown in the figure. (x2)



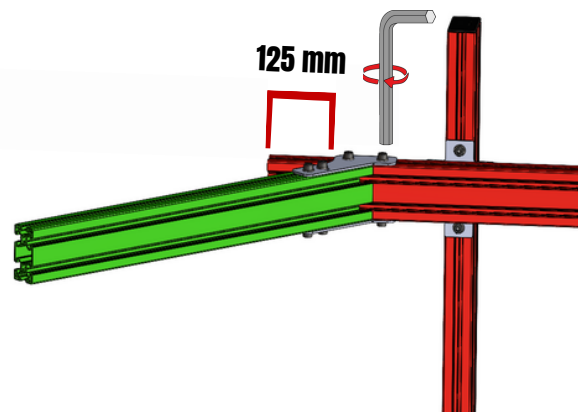
2

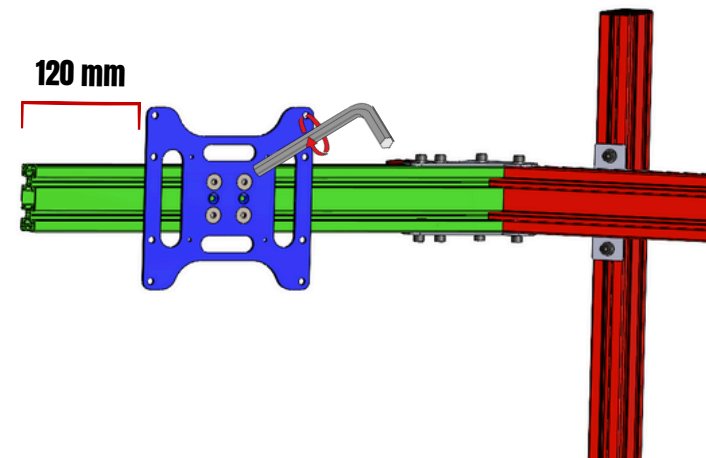
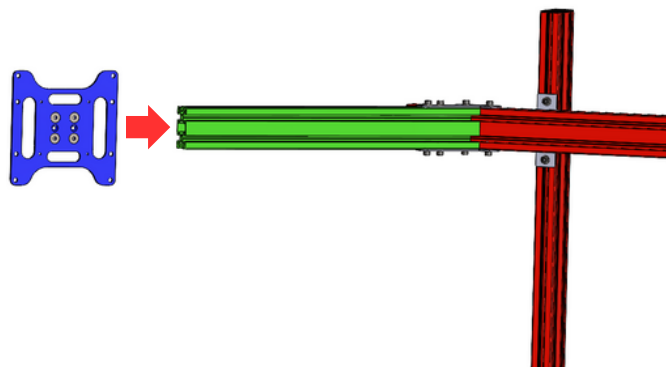
Insert the plates you have prepared into the profile as shown in the figure, but **do not secure them**. (x2)



3

Attach the angled profile indicated in green to the T-slot nuts on the plates you prepared in step 2. Then, align the plates, adjust to your desired distance, and secure by tightening with a hex key. (**Recommended measurement is 125 mm**).

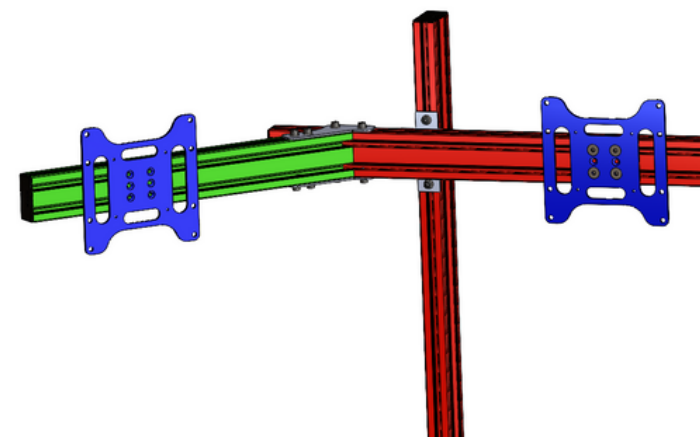
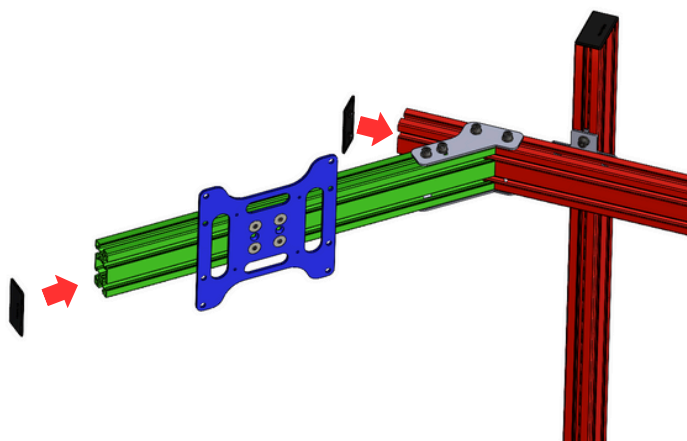




1

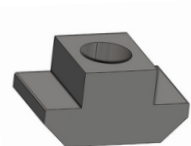
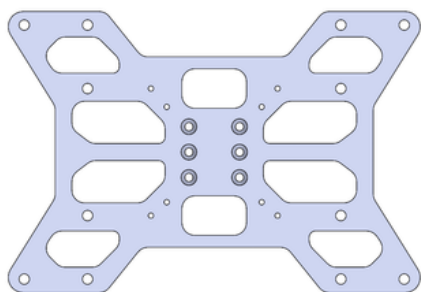
Attach the Vesa you have prepared to the angled profile indicated in green, which you have connected to the main body. (x2)

After adjusting the Vesa to your desired distance, secure it by tightening with a hex key. (x2) (Recommended measurement is 120 mm).

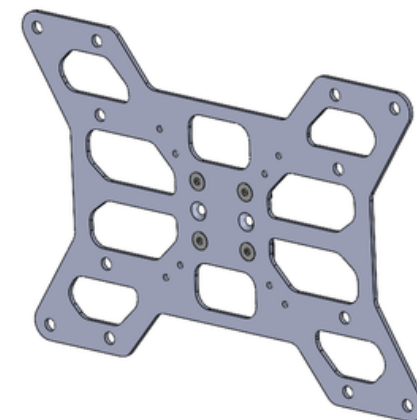
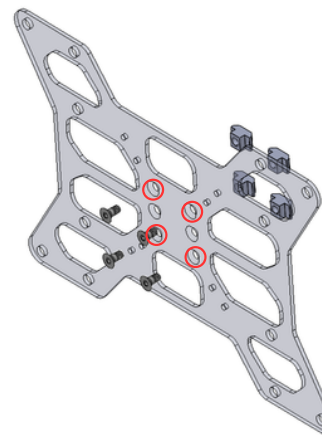


2

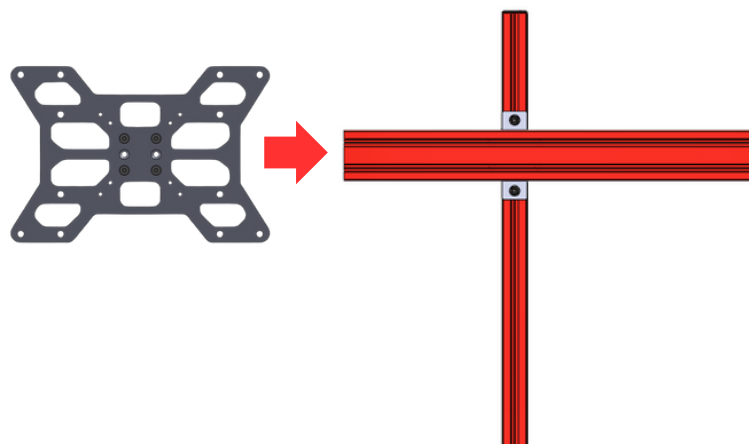
Finally, attach the 40x80 end caps to the indicated locations as shown in the figure. (x2)

**1**

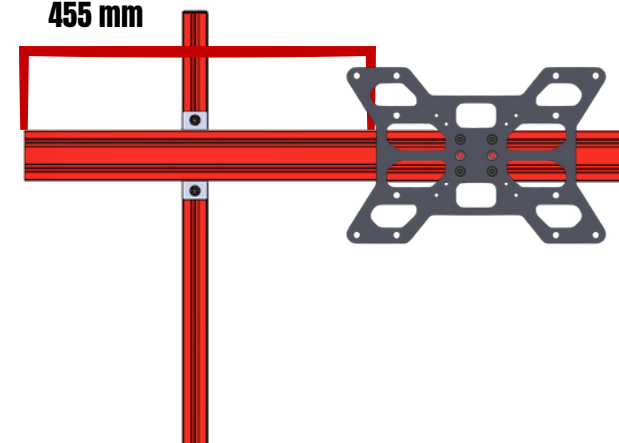
The Vesa components in the package are as shown in the figure.

**2**

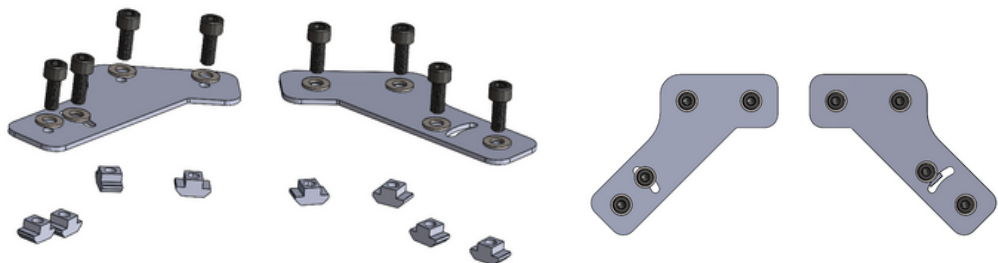
Assemble the components as shown in the figure.



455 mm

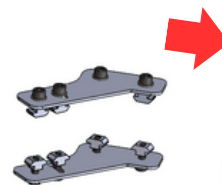
**3**

Insert the Vesa you have prepared into the canals of the screen stand as shown, and center it (the distance between the Vesa and the profile is 455 mm). Then, secure the Vesa by tightening with a hex key.



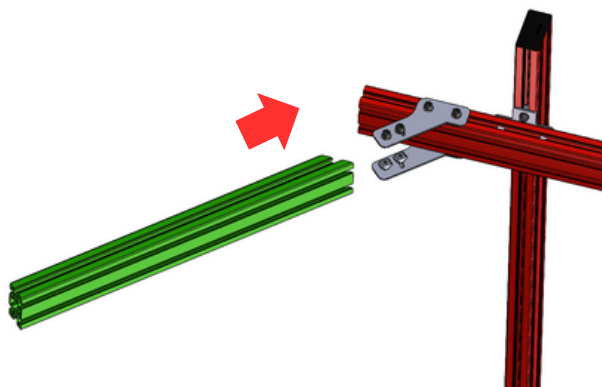
1

Attach the washer screw and T-slot nuts to the angled profile mounting plates in two different directions as shown in the figure. (x2)



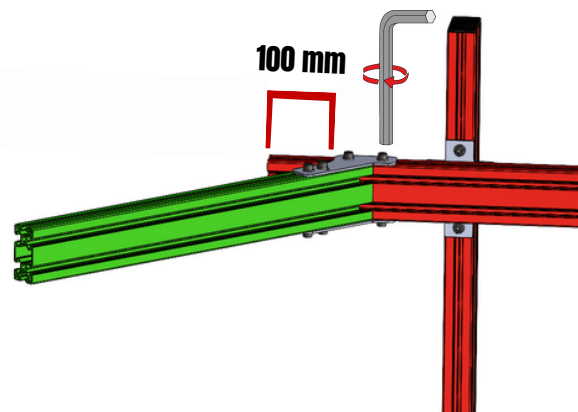
2

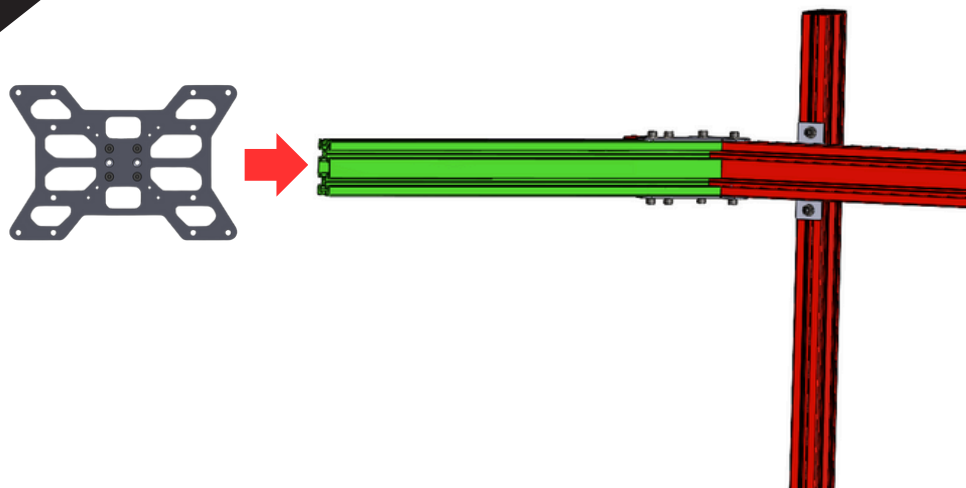
Insert the plates you have prepared into the profile as shown in the figure, but **do not secure them**. (x2)



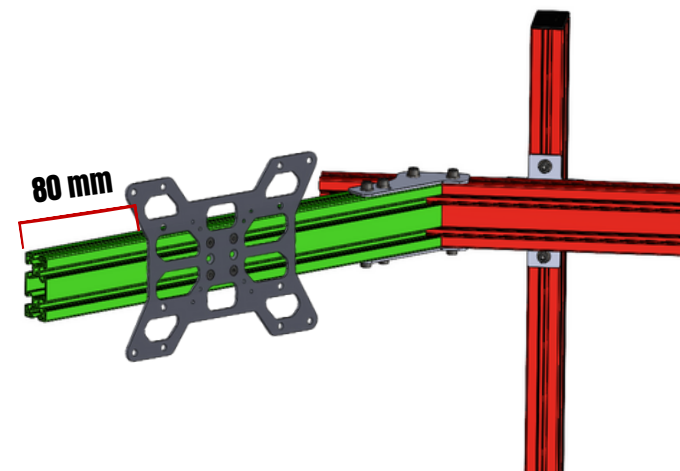
3

Attach the angled profile indicated in green to the T-slot nuts on the plates you prepared in step 2. Then, align the plates, adjust to your desired distance, and secure by tightening with a hex key. (**Recommended measurement is 125 mm**).

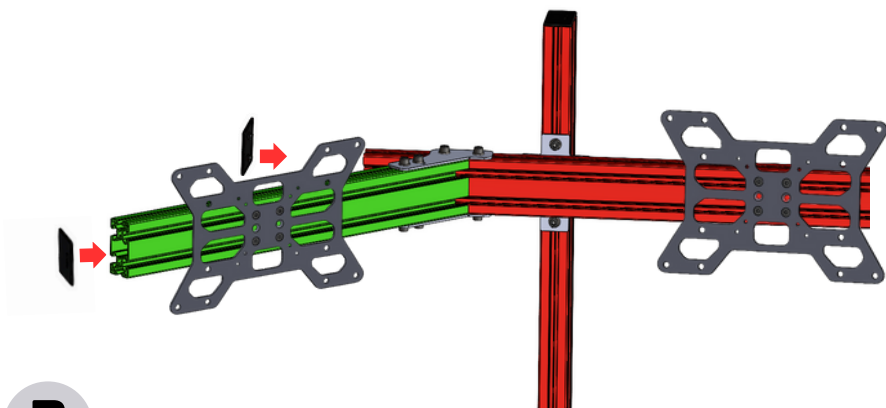
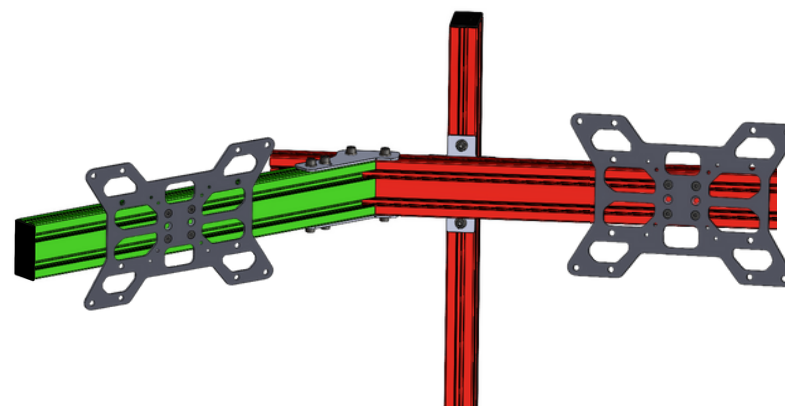


**1**

Attach the Vesa you have prepared to the angled profile indicated in green, which you have connected to the main body. (x2)



After adjusting the Vesa to your desired distance, secure it by tightening with a hex key. (x2) (**Recommended measurement is 80 mm**).

**2**

Finally, attach the 40x80 profile caps to the indicated locations as shown in the figure. (x2)

